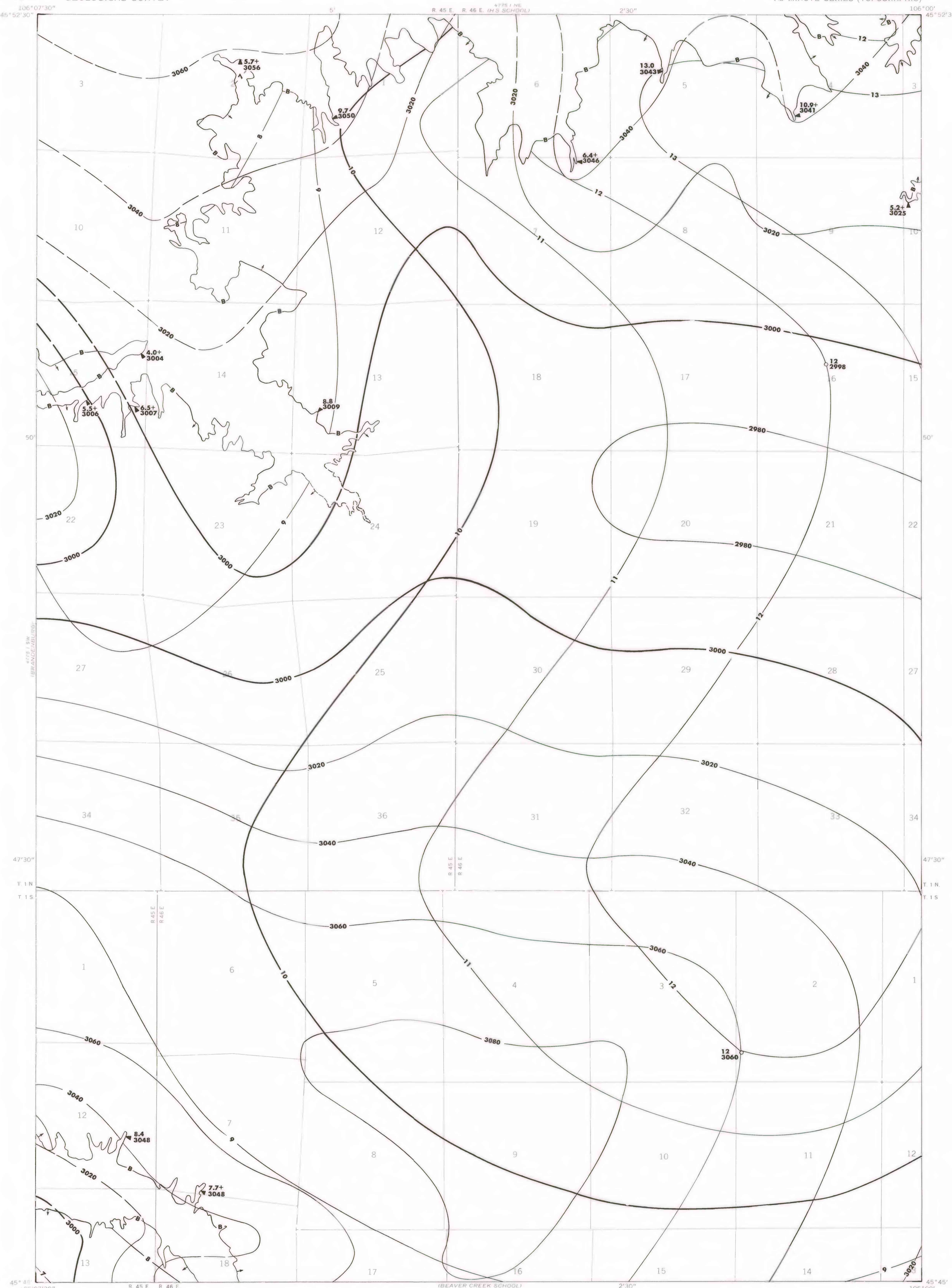


OPEN-FILE REPORT
This report has not been edited for conformity with U.S. Geological Survey editorial standards or stratigraphic nomenclature.

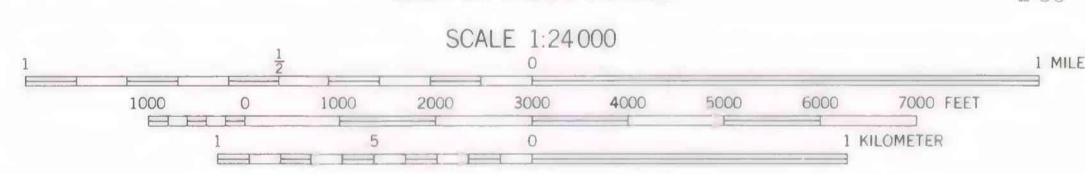
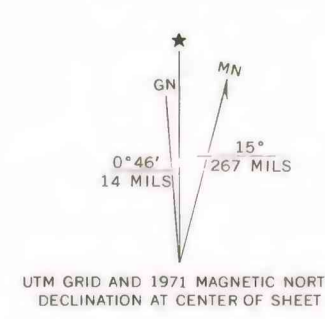
EXPLANATION

- ISOPACHS OF THE COAL BED—Showing thickness, in feet. Isopach interval 1 foot.
 - STRUCTURE CONTOURS—Drawn on the top of the coal bed. Dashed where projected beyond boundary of coal. Contour interval 20 feet (6.1 m). Datum is mean sea level.
 - BOUNDARY OF COAL DEPOSIT—Drawn along the outcrop of coal bed and/or the contact between burned and unburned coal (clashed where inferred by present author beyond the limits of original data). Arrows point toward coal-bearing area. Numbers are coal bed thickness and altitude on top of the coal bed, measured in feet. Plus (+) sign after number indicates incomplete measurement.
 - DRILL HOLE—Showing thickness and altitude at the top of the coal bed, in feet.
- To convert feet to meters, multiply feet by 0.3048.



Base map from U.S. Geological Survey, 1971

Compiled in 1977



**COAL RESOURCE OCCURRENCE MAP OF THE HAYES POINT QUADRANGLE,
CUSTER AND POWDER RIVER COUNTIES, MONTANA**
BY
COLORADO SCHOOL OF MINES RESEARCH INSTITUTE
1979