

OPEN-FILE REPORT
This report has not been edited for conformity with
U.S. Geological Survey editorial standards or
stratigraphic nomenclature.

EXPLANATION

500
OVERBURDEN ISOPACH—Showing thickness of overburden, in feet, from the surface to the top of the coal bed. Overburden isopachs within the stripping limit are omitted where they are too close to a mining-ratio contour for map readability. Isopach interval 00 feet with intermediate 100 feet (30.5 m) and 300 feet (91 m) isopachs.

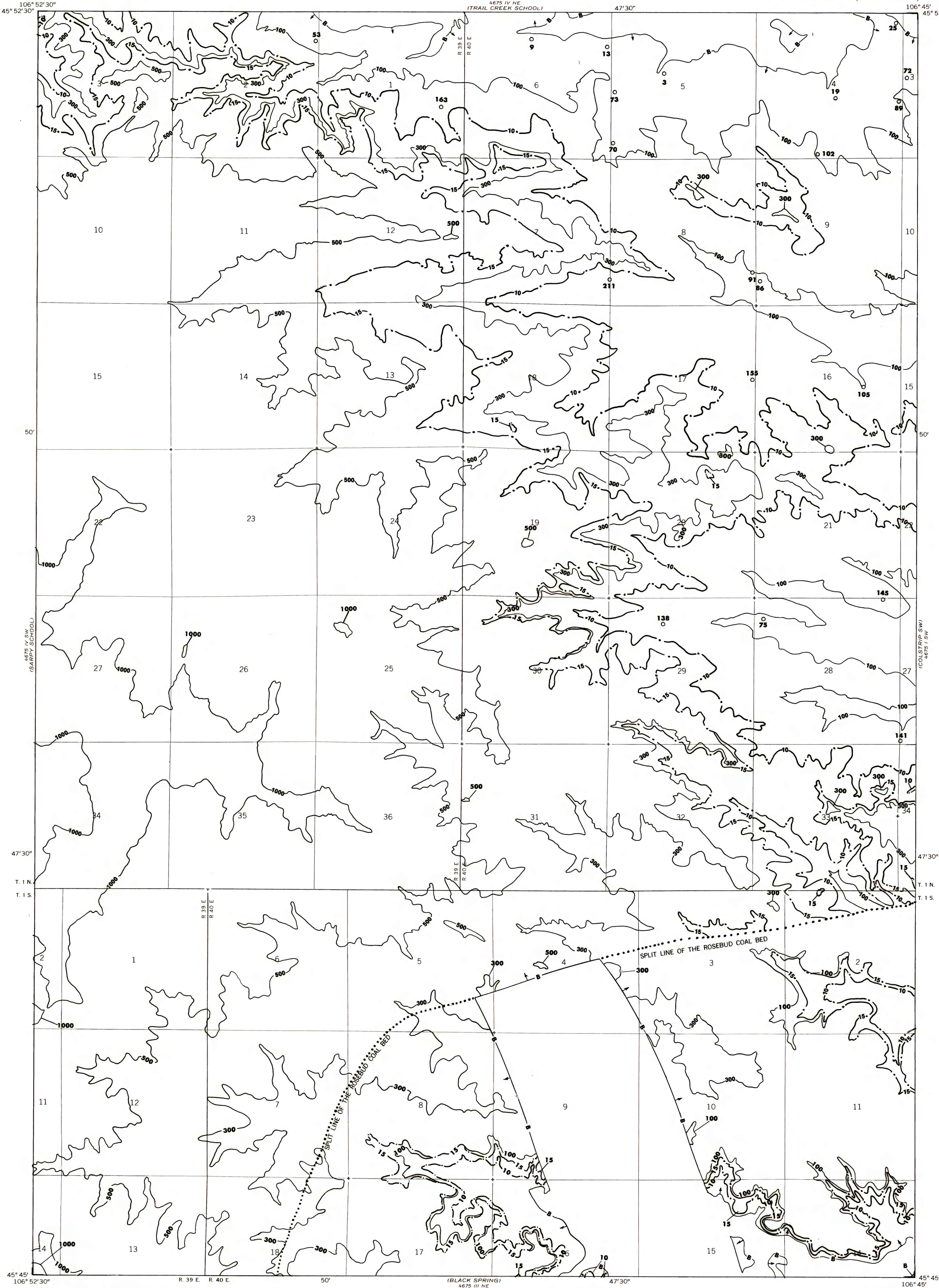
B
BOUNDARY OF COAL 5 FEET OR MORE THICK—Drawn along the outcrop of coal bed and/or the inferred contact between burned and unburned coal, and/or the 5-foot coal isopach, and/or the split line of the Rosebud coal bed. Arrows point toward area of coal 5 feet or more thick.

72
DRILL HOLE—Showing thickness of overburden, in feet, from the surface to the top of the coal bed.

10
MINING-RATIO CONTOUR—Number indicates cubic yards of overburden per ton of recoverable coal by surface-mining methods. Contours shown only in areas suitable for surface mining within the stripping limit.

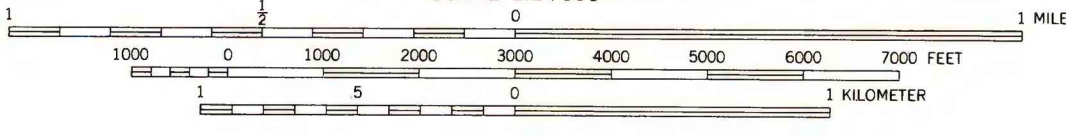
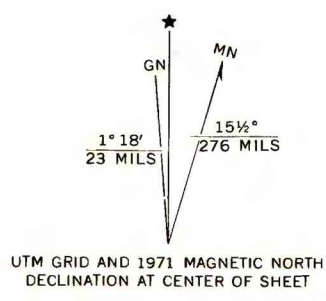
To convert feet to meters, multiply feet by 0.3048.

To convert yds³/ton to m³/metric ton, multiply yds³/ton by 0.842.



Base map from U.S. Geological Survey, 1971

Compiled in 1977



**COAL RESOURCE OCCURRENCE MAP OF THE ROUGH DRAW
QUADRANGLE, ROSEBUD COUNTY, MONTANA**

BY
**COLORADO SCHOOL OF MINES RESEARCH INSTITUTE
1979**

PLATE 12
OVERBURDEN ISOPACH AND MINING-RATIO
MAP OF THE ROSEBUD COAL BED AND
THE UPPER ROSEBUD SPLIT OF
THE ROSEBUD COAL BED