

OPEN-FILE REPORT
This report has not been edited for conformity with
U.S. Geological Survey editorial standards or
stratigraphic nomenclature.

EXPLANATION

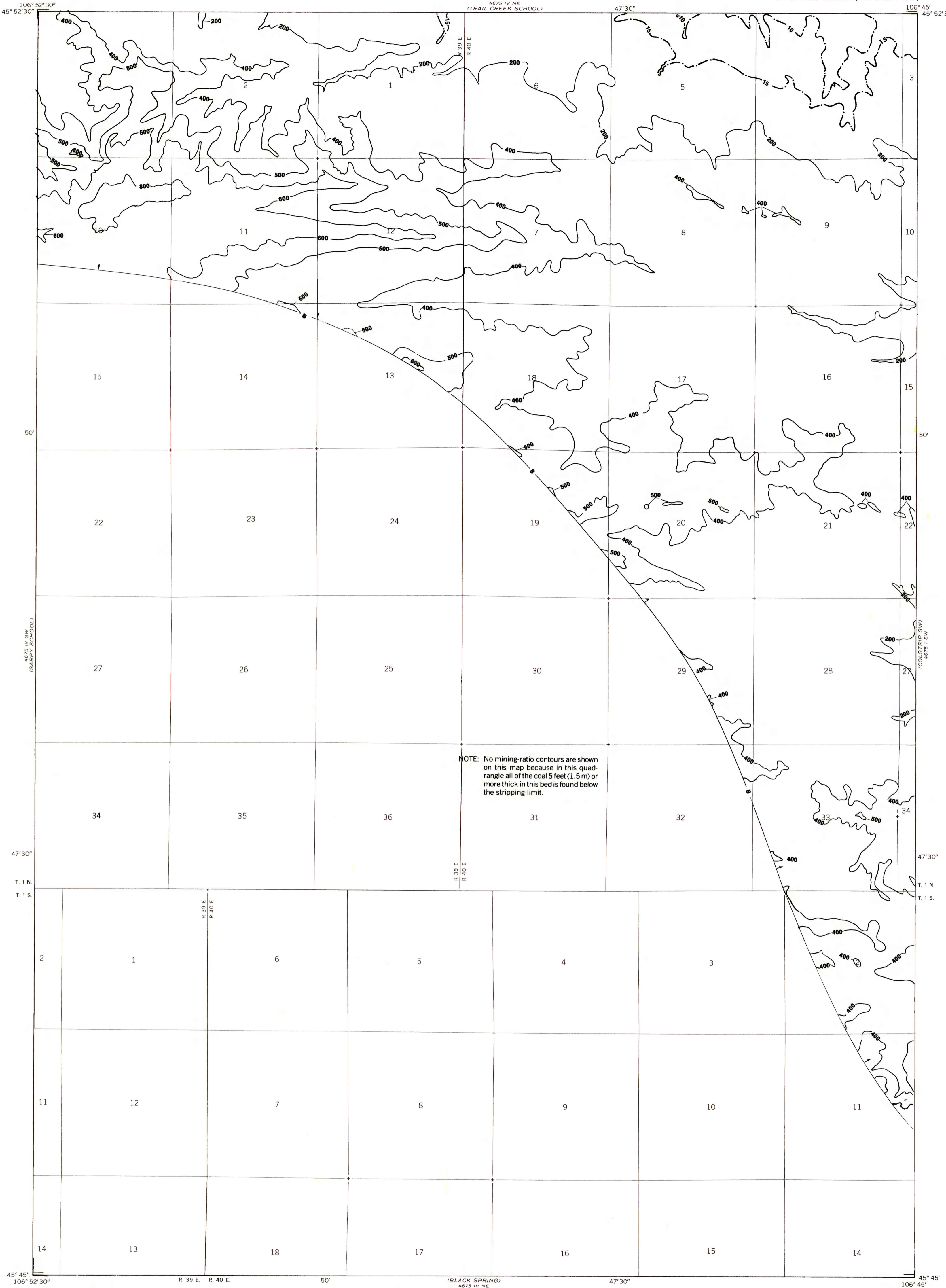
200
OVERBURDEN ISOPACH—Showing thickness of overburden, in feet, from the surface to the top of the coal bed. Isopach interval 200 feet (61 m) with an intermediate 500 foot isopach.

B
BOUNDARY OF COAL 5 FEET OR MORE THICK—Drawn along the outcrop of coal bed and/or the inferred contact between burned and unburned coal, and/or the 5-foot coal isopach. Arrows point toward area of coal 5 feet or more thick.

10
MINING-RATIO CONTOUR—Number indicates cubic yards of overburden per ton of recoverable coal by surface-mining methods. Contours shown only in areas suitable for surface mining within the stripping limit.

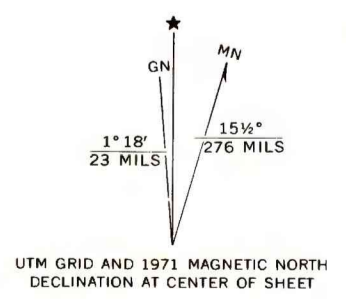
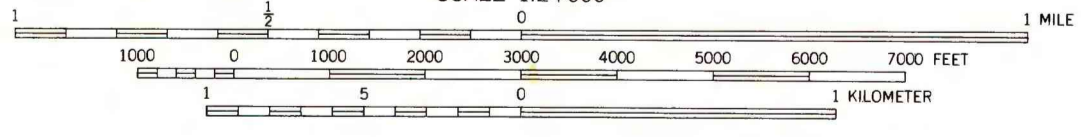
To convert feet to meters, multiply feet by 0.3048.

To convert yds³/ton to m³/metric ton, multiply yds³/ton by 0.842.



NOTE: No mining-ratio contours are shown on this map because in this quadrangle all of the coal 5 feet (1.5 m) or more thick in this bed is found below the stripping limit.

(BLACK SPRING)
4475 1/4 NE
SCALE 1:24,000



**COAL RESOURCE OCCURRENCE MAP OF THE ROUGH DRAW
QUADRANGLE, ROSEBUD COUNTY, MONTANA**

BY
**COLORADO SCHOOL OF MINES RESEARCH INSTITUTE
1979**