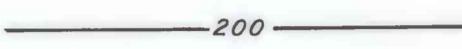

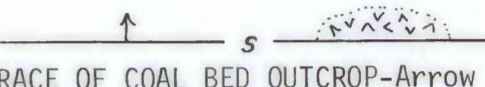


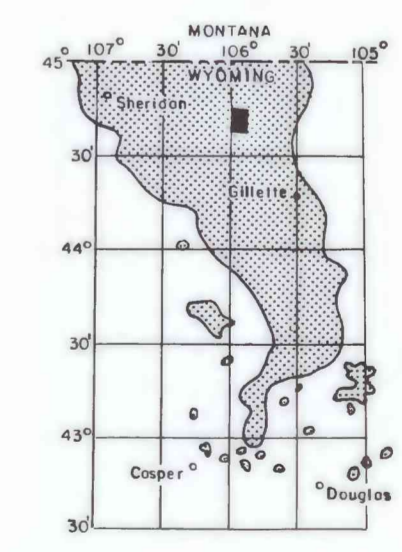
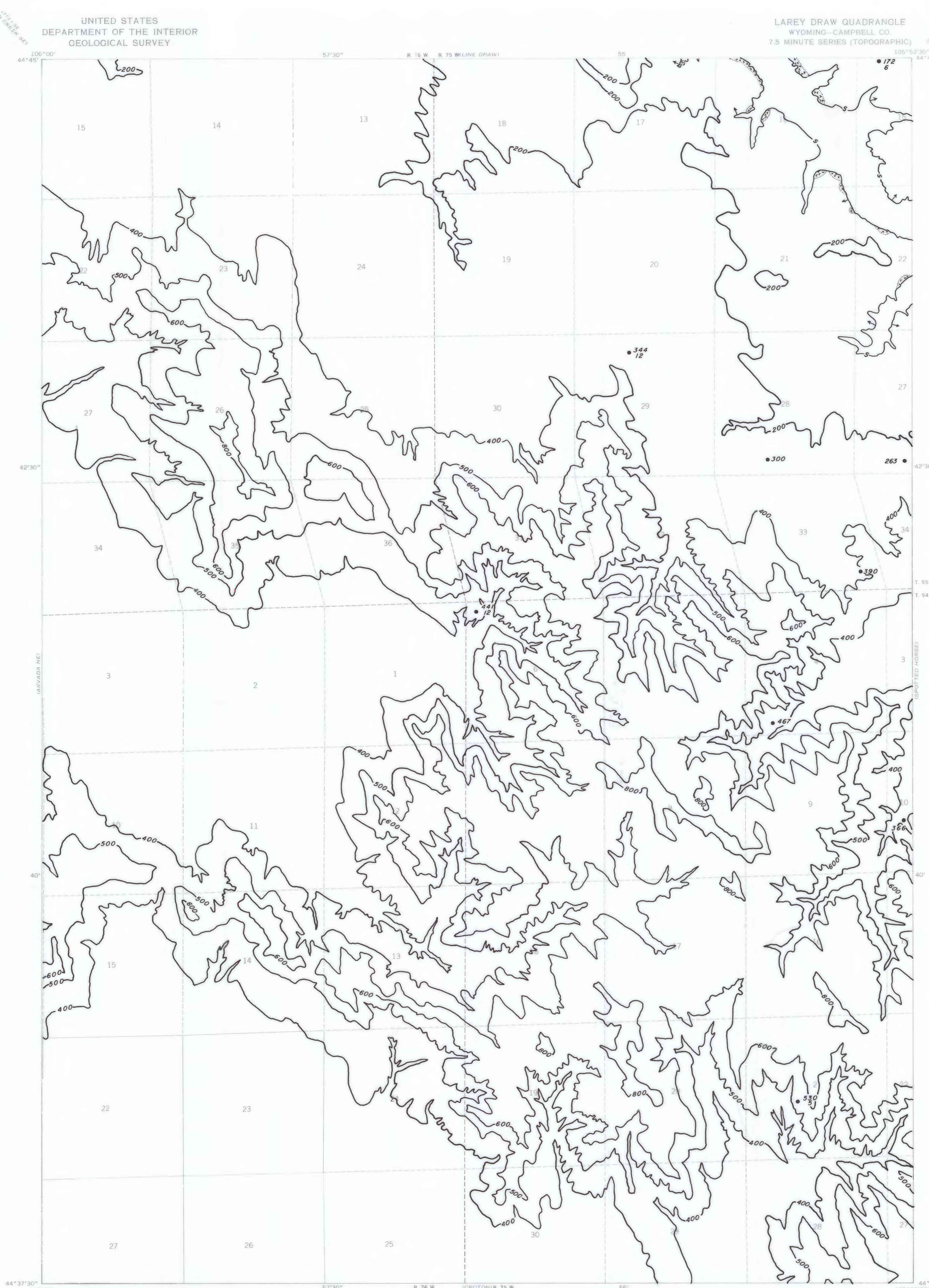
EXPLANATION

 200
OVERBURDEN ISOPACH-Showing thickness of overburden, in feet, from the surface to the top of the coal bed. Isopach interval variable.

 300 344
12 12
DRILL HOLE-Showing thickness of overburden, in feet, from the surface to top of coal bed. Lower number indicates interburden thickness, in feet, between upper and lower splits of coal bed.

 5
TRACE OF COAL BED OUTCROP-Arrow points toward the coal-bearing area. "V" symbol indicates burned rock with dotted line showing limit of burning.

To convert feet to meters, multiply feet by 0.3048.

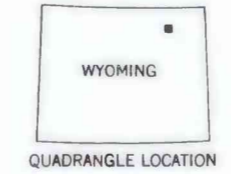
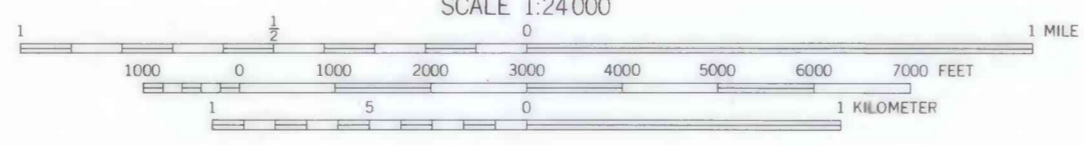
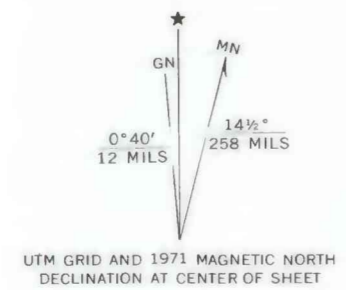


MAP SHOWING LOCATION OF THE LAREY DRAW QUADRANGLE AND THE POWDER RIVER BASIN KNOWN RECOVERABLE COAL RESOURCE AREA (STIPPLED), WYOMING

This report has not been edited for conformity with U.S. Geological Survey editorial standards or stratigraphic nomenclature.

Base from U.S. Geological Survey, 1971

Compiled in 1978



COAL RESOURCE OCCURRENCE MAP OF THE LAREY DRAW QUADRANGLE, CAMPBELL COUNTY, WYOMING

BY
IntraSearch
1978

PLATE 16
ISOPACH MAP OF
OVERBURDEN OF
SMITH COAL BED