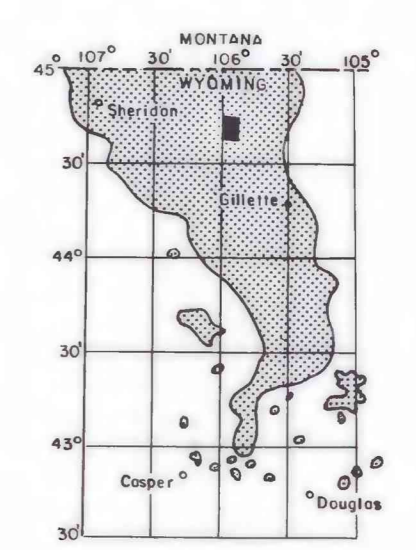
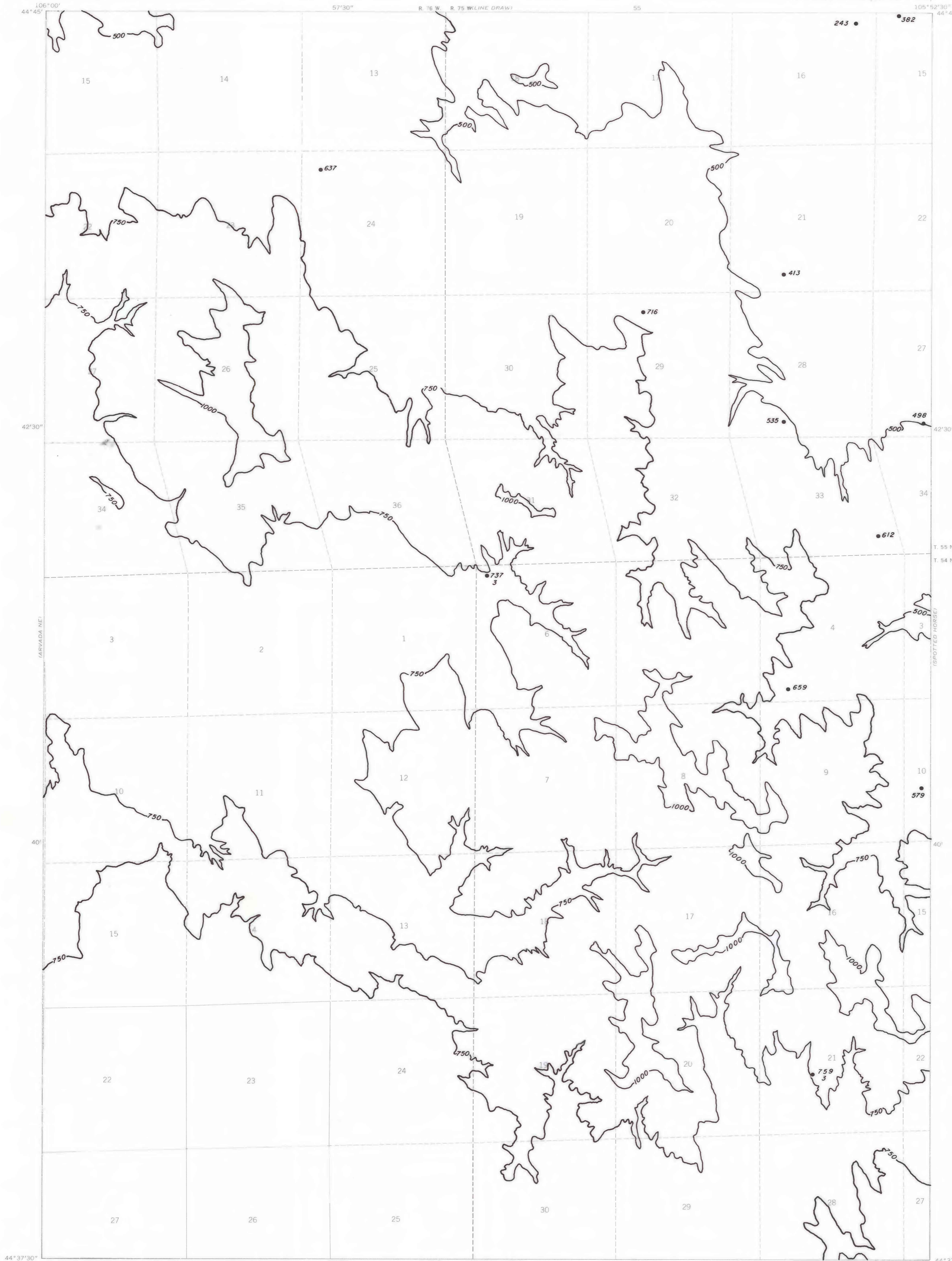


EXPLANATION

— 500 —
OVERBURDEN ISOPACH—Showing thickness of overburden, in feet, from the surface to the top of the coal bed. Isopach interval 250 feet.

● 243 ● 759
● 3
● 3
DRILL HOLE—Showing thickness of overburden, in feet, from the surface to top of coal bed. Lower number indicates interburden thickness, in feet, between upper and lower splits of coal bed.

To convert feet to meters, multiply feet by 0.3048.



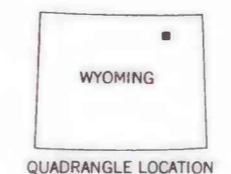
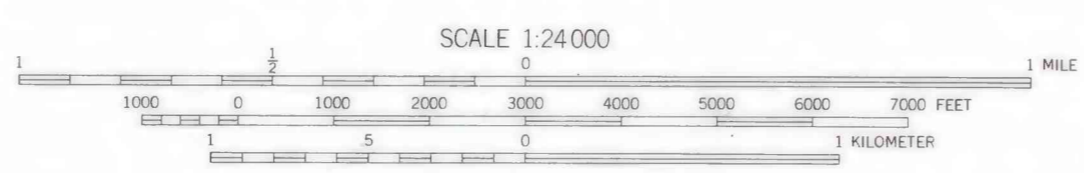
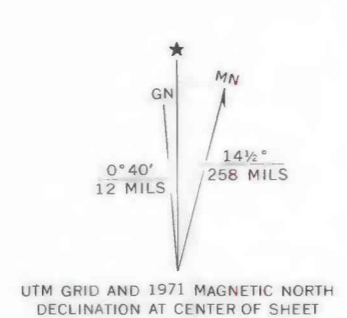
MAP SHOWING LOCATION OF THE LAREY DRAW QUADRANGLE AND THE POWDER RIVER BASIN KNOWN RECOVERABLE COAL RESOURCE AREA (STIPPLED), WYOMING

This report has not been edited for conformity with U.S. Geological Survey editorial standards or stratigraphic nomenclature.

PLATE 26
ISOPACH MAP OF
OVERBURDEN OF
ANDERSON COAL BED

COAL RESOURCE OCCURRENCE MAP OF THE LAREY DRAW
QUADRANGLE, CAMPBELL COUNTY, WYOMING

BY
IntraSearch
1978



1:24,000 (24,000)

1:24,000 (24,000)