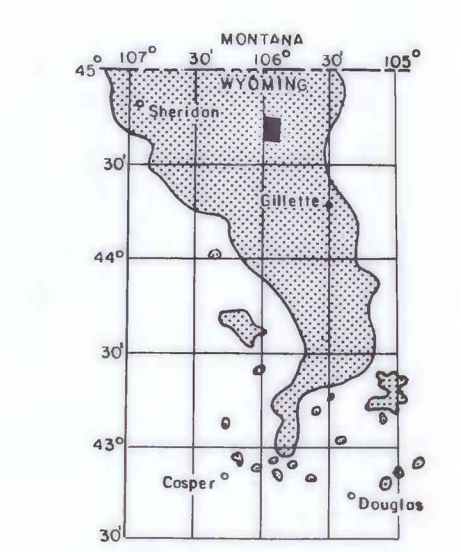
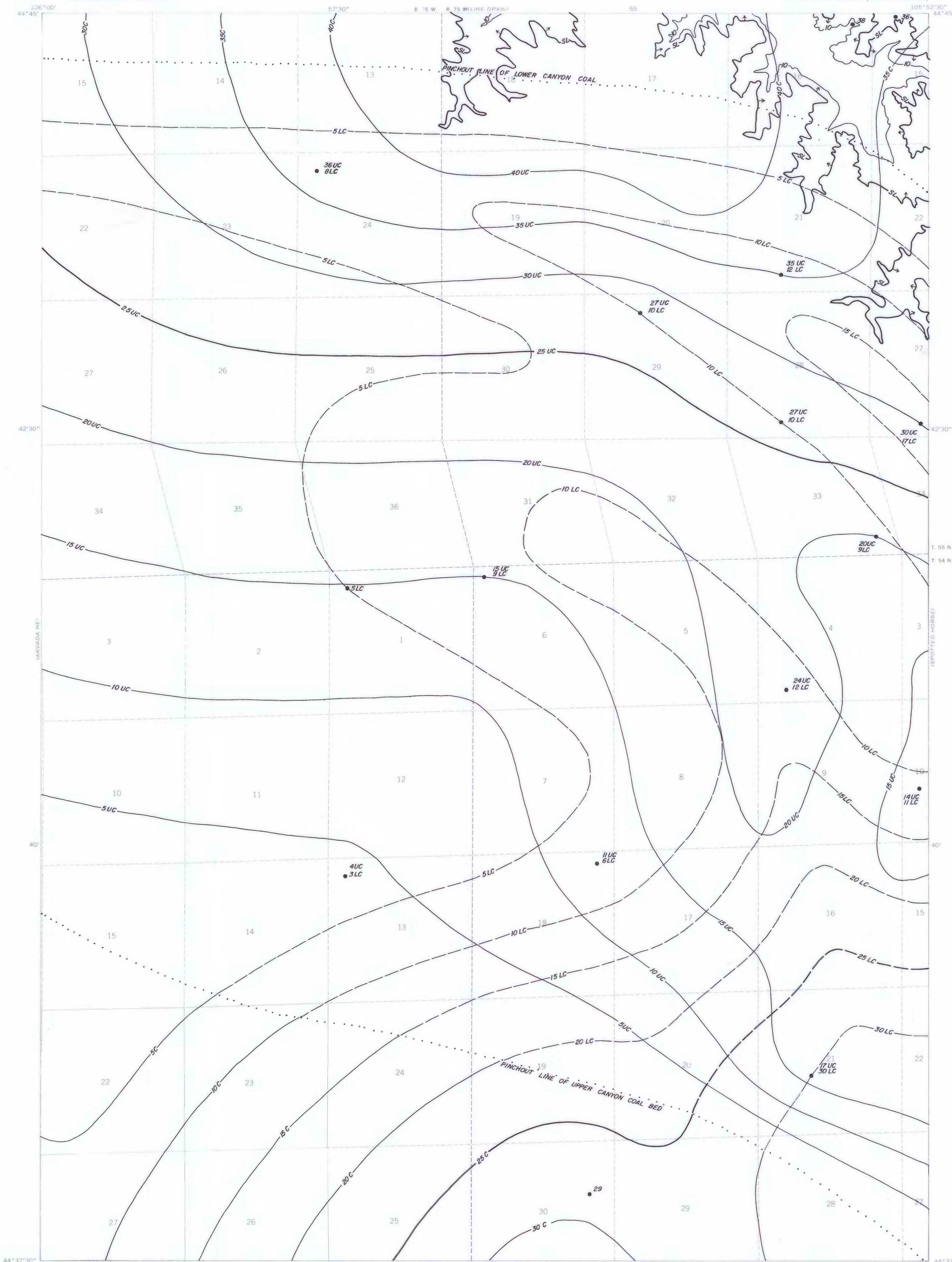


EXPLANATION

- 25 —  
— 20 —  
ISOPACHS OF COAL BED—Showing thickness in feet, interval 5 feet.
- 25UC —  
— 20UC —  
— 25LC —  
— 30LC —  
ISOPACHS OF SPLIT COAL BEDS—Solid line indicates upper bed. Dashed line indicates lower bed.
- 29 ● 35UC  
● 12LC ● 12LC  
DRILL HOLE—Showing coal thickness in feet.
- ↑ SL ↑  
STRIPPING LIMIT LINE—500 foot overburden isopach boundary for surface mining of coal. Arrow indicates area suitable for surface mining.
- 10 —  
MINING RATIO CONTOUR—Number indicates cubic yards of overburden per ton of recoverable coal by surface mining methods. Contours shown only in area suitable for surface mining within the stripping limit.

To convert feet to meters, multiply feet by 0.3048.

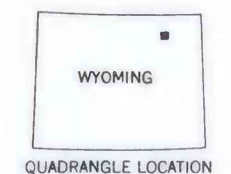
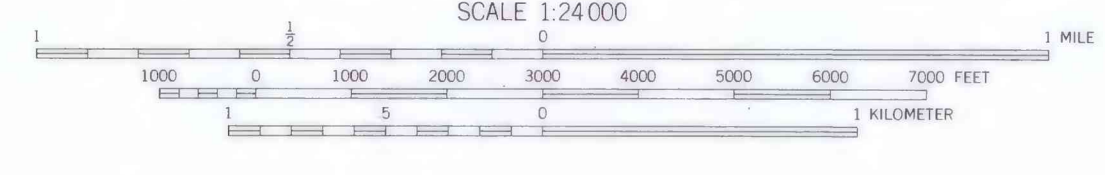
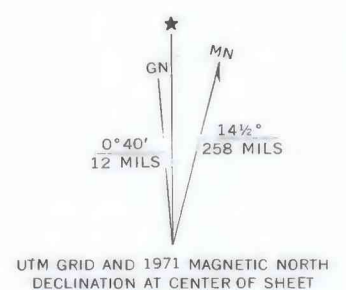


MAP SHOWING LOCATION OF THE LAREY DRAW QUADRANGLE AND THE POWDER RIVER BASIN KNOWN RECOVERABLE COAL RESOURCE AREA (STIPPLED), WYOMING

This report has not been edited for conformity with U.S. Geological Survey editorial standards or stratigraphic nomenclature.

Base from U.S. Geological Survey, 1971

Compiled in 1978



COAL RESOURCE OCCURRENCE MAP OF THE LAREY DRAW  
QUADRANGLE, CAMPBELL COUNTY, WYOMING

BY  
IntraSearch  
1978