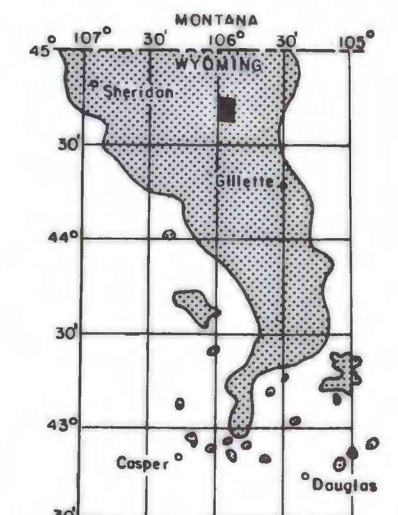
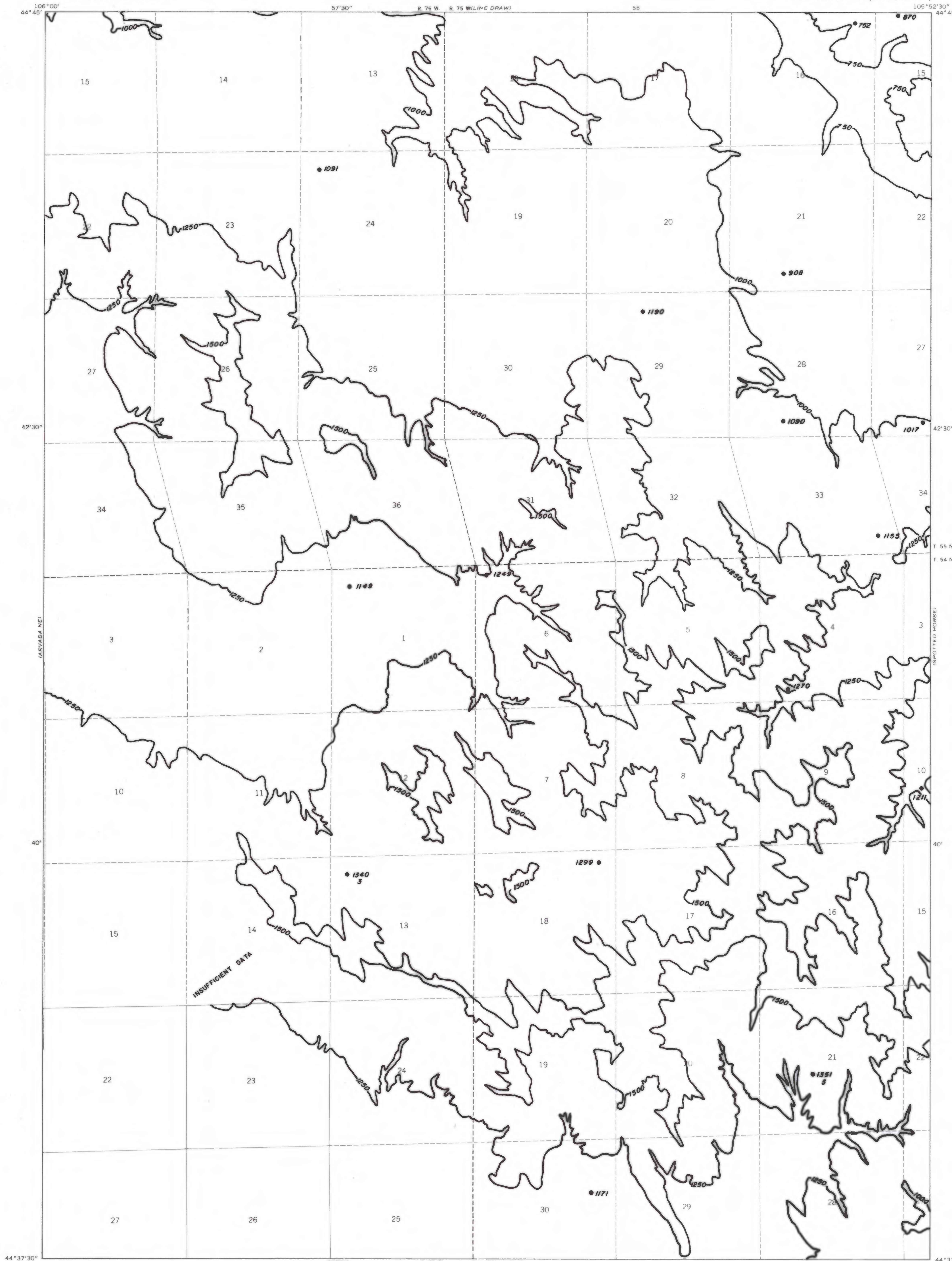


EXPLANATION

750
OVERBURDEN ISOPACH—Showing thickness of overburden, in feet, from the surface to the top of the coal bed. Isopach interval 250 feet.

752
DRILL HOLE—Showing thickness of overburden, in feet, from the surface to top of coal bed.

To convert feet to meters, multiply feet by 0.3048.



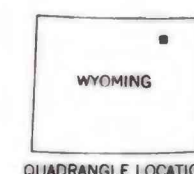
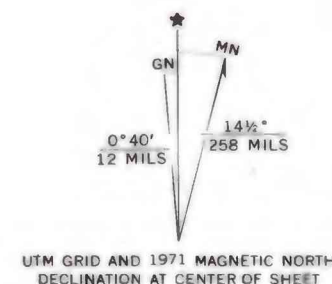
MAP SHOWING LOCATION OF THE LAREY DRAW QUADRANGLE AND THE POWDER RIVER BASIN KNOWN RECOVERABLE COAL RESOURCE AREA (STIPPLED), WYOMING

This report has not been edited for conformity with U.S. Geological Survey editorial standards or stratigraphic nomenclature.

Base from U.S. Geological Survey, 1971

Compiled in 1978

INSUFFICIENT DATA



COAL RESOURCE OCCURRENCE MAP OF THE LAREY DRAW QUADRANGLE, CAMPBELL COUNTY, WYOMING

BY
IntraSearch
1978

PLATE 41
ISOPACH MAP OF
OVERBURDEN OF
WALL COAL BED