

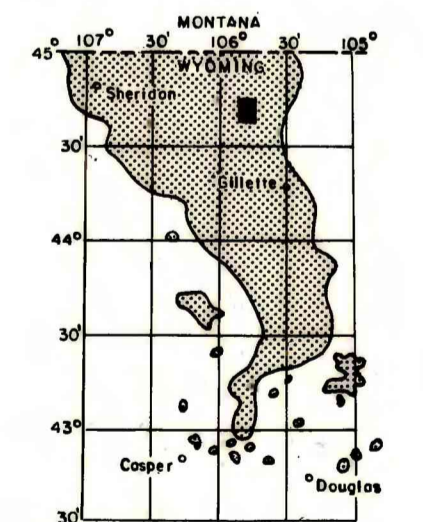
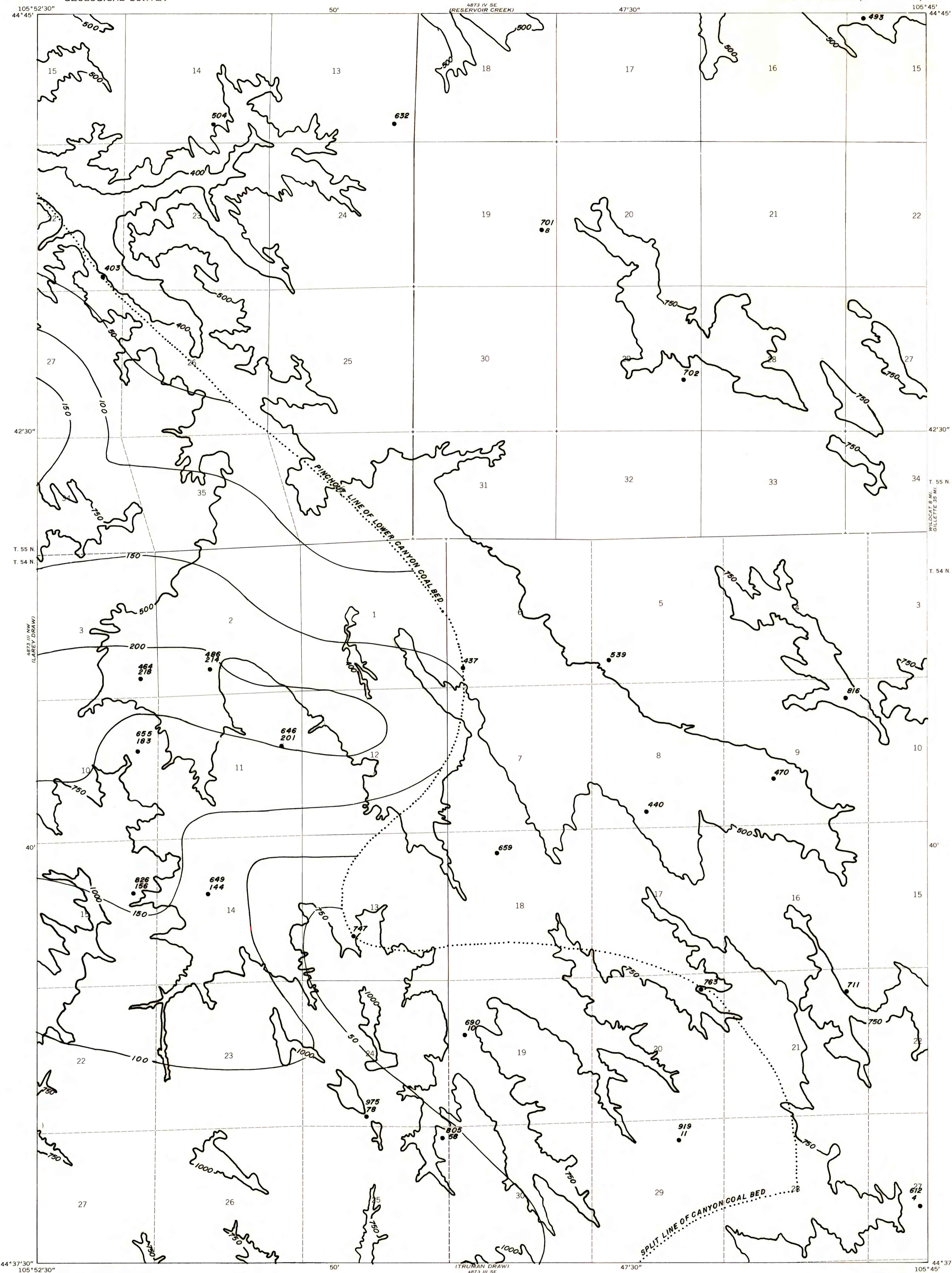
EXPLANATION

500
OVERBURDEN ISOPACH—Showing thickness of overburden, in feet, from the surface to the top of the coal bed. Isopach interval variable.

100
INTERBURDEN ISOPACH—Showing thickness of interburden, in feet, between the splits of the coal bed. Isopach interval 50 feet.

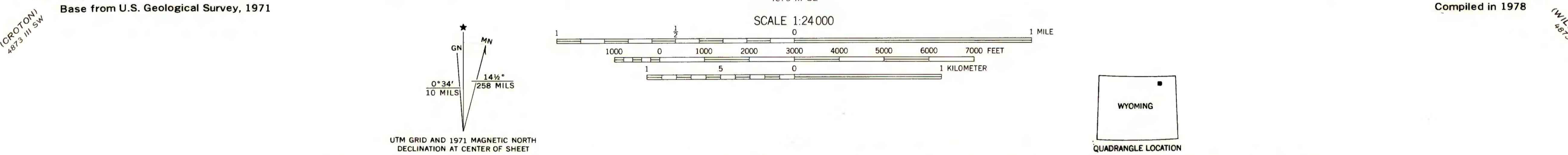
701 690
DRILL HOLE—Showing thickness of overburden, in feet, from the surface to top of coal bed. Lower number indicates interburden thickness, in feet, between upper and lower splits of coal bed.

To convert feet to meters, multiply feet by 0.3048.



MAP SHOWING LOCATION OF THE SPOTTED HORSE QUADRANGLE AND THE POWDER RIVER BASIN KNOWN RECOVERABLE COAL RESOURCE AREA (STIPPLED), WYOMING

This report has not been edited for conformity with U.S. Geological Survey editorial standards or stratigraphic nomenclature.



COAL RESOURCE OCCURRENCE MAP OF THE SPOTTED HORSE QUADRANGLE, CAMPBELL COUNTY, WYOMING

BY
IntraSearch
1978