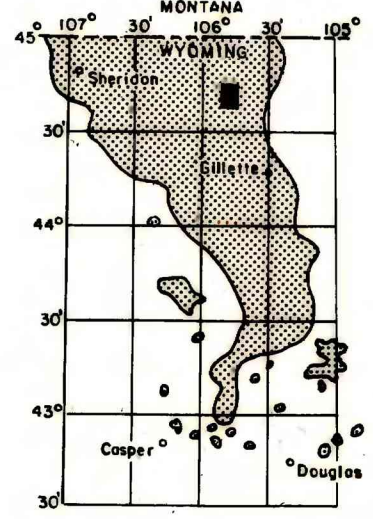
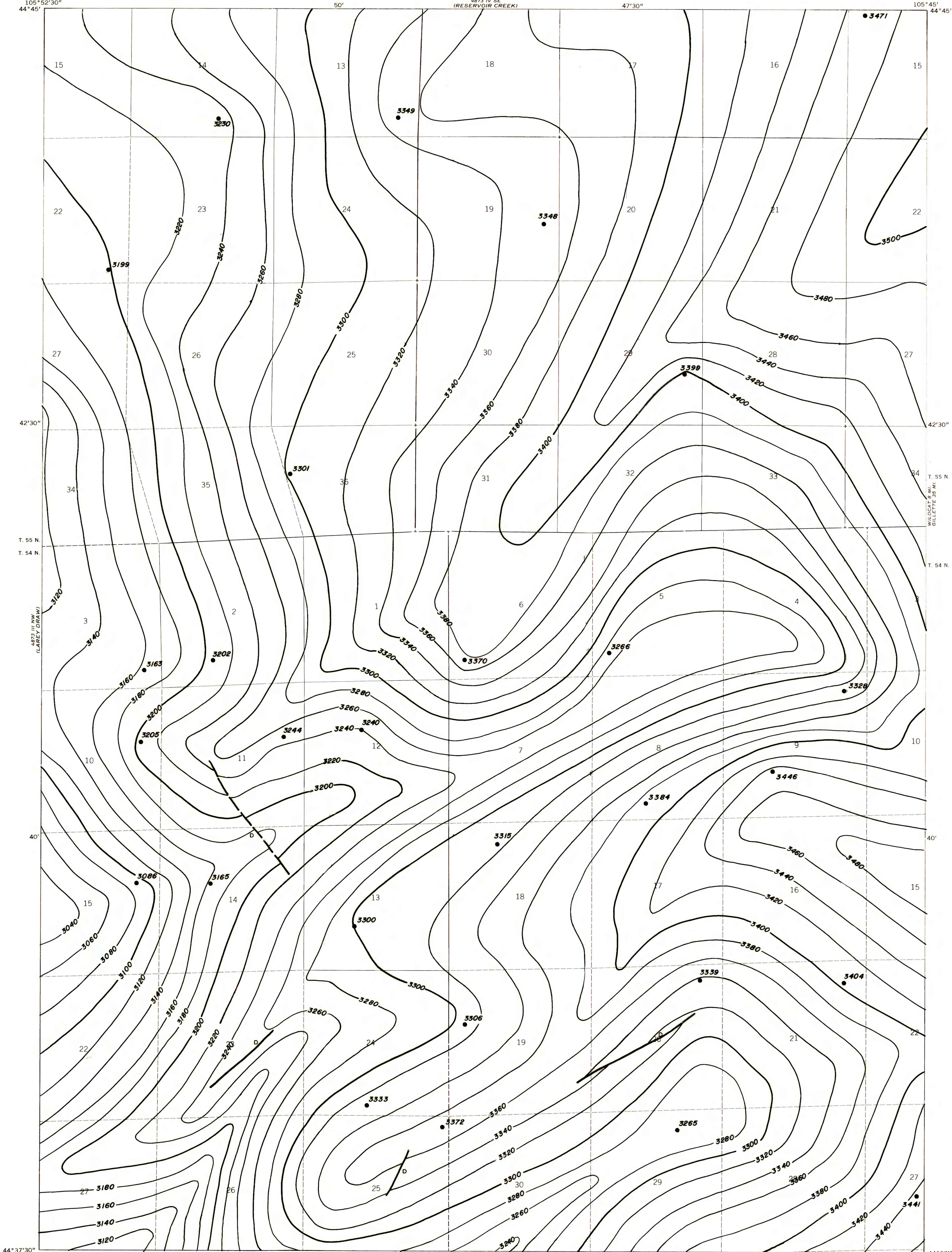


EXPLANATION

— 3400 —  
— 3420 —  
STRUCTURE CONTOURS—Drawn on top of coal bed. Contour interval 20 feet. Datum is mean sea level.

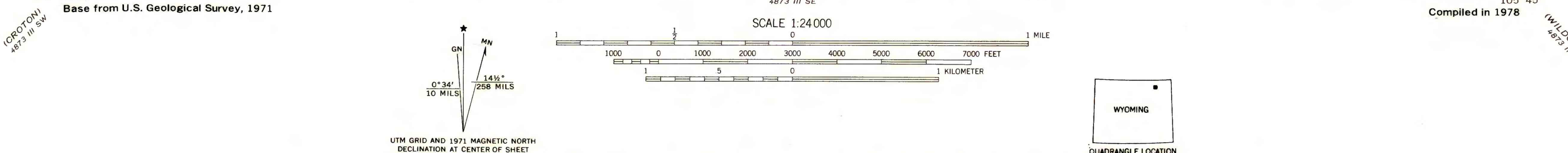
● 3391  
DRILL HOLE—Showing elevation at top of coal bed, in feet.

To convert feet to meters multiply feet by 0.3048.



MAP SHOWING LOCATION OF THE SPOTTED HORSE QUADRANGLE AND THE POWDER RIVER BASIN KNOWN RECOVERABLE COAL RESOURCE AREA (STIPPLED), WYOMING

This report has not been edited for conformity with U.S. Geological Survey editorial standards or stratigraphic nomenclature.



**COAL RESOURCE OCCURRENCE MAP OF THE SPOTTED HORSE QUADRANGLE, CAMPBELL COUNTY, WYOMING**

BY  
**IntraSearch**  
1978