

4873 III SW
(KLINE DRAW)

UNITED STATES
DEPARTMENT OF THE INTERIOR
GEOLOGICAL SURVEY

SPOTTED HORSE QUADRANGLE
WYOMING-CAMPBELL CO.
7.5 MINUTE SERIES (TOPOGRAPHIC)

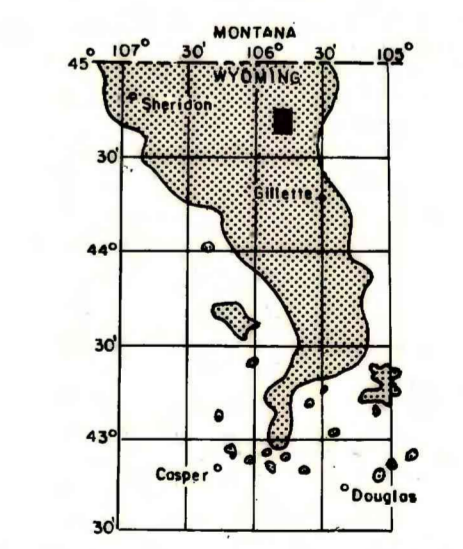
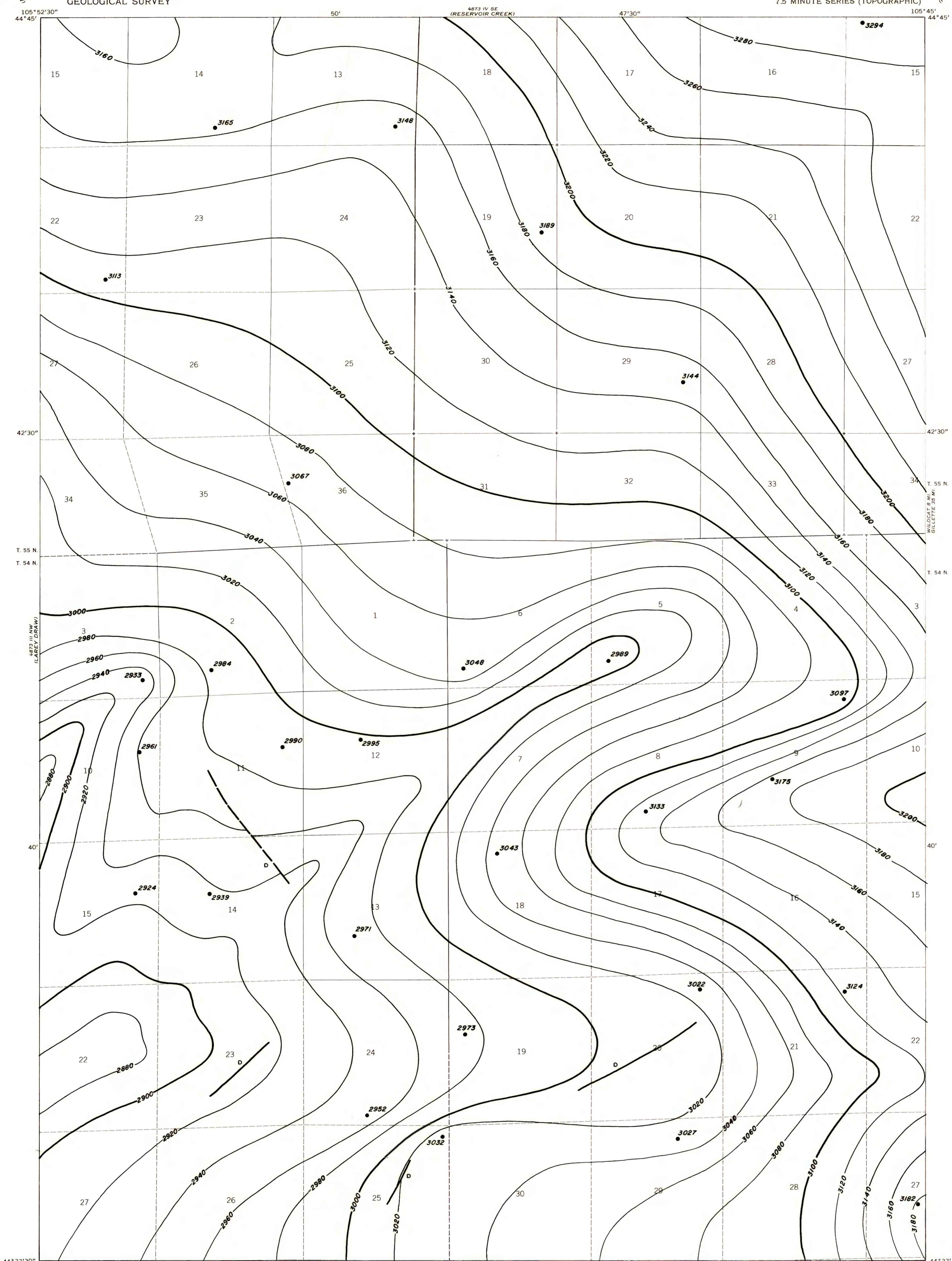
OPEN FILE REPORT 79-024
PLATE 40 OF 49

EXPLANATION

STRUCTURE CONTOURS—Drawn on top
of coal bed. Contour interval
20 feet. Datum is mean sea
level.

DRILL HOLE—Showing elevation
at top of coal bed, in feet.

To convert feet to meters
multiply feet by 0.3048.



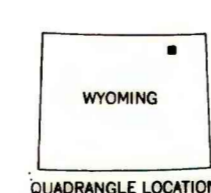
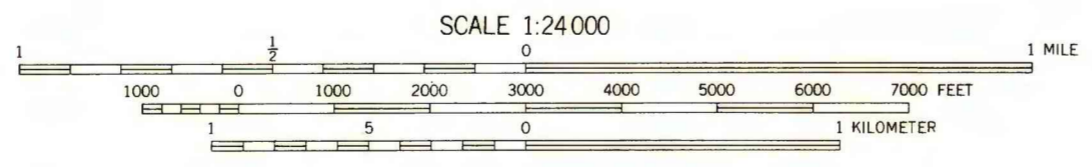
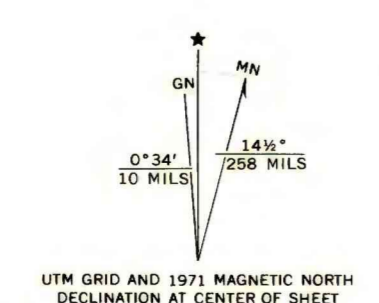
MAP SHOWING LOCATION OF THE
SPOTTED HORSE QUADRANGLE AND
THE POWDER RIVER BASIN KNOWN
RECOVERABLE COAL RESOURCE
AREA (STIPPLED), WYOMING

This report has not been edited
for conformity with U.S. Geological
Survey editorial standards or
stratigraphic nomenclature.

Base from U.S. Geological Survey, 1971

Compiled in 1978

4873 III SW
(CROTON)



COAL RESOURCE OCCURRENCE MAP OF THE SPOTTED HORSE QUADRANGLE, CAMPBELL COUNTY, WYOMING

BY
IntraSearch
1978

PLATE 40
STRUCTURE CONTOUR MAP OF
WALL-PAWNEE COAL ZONE