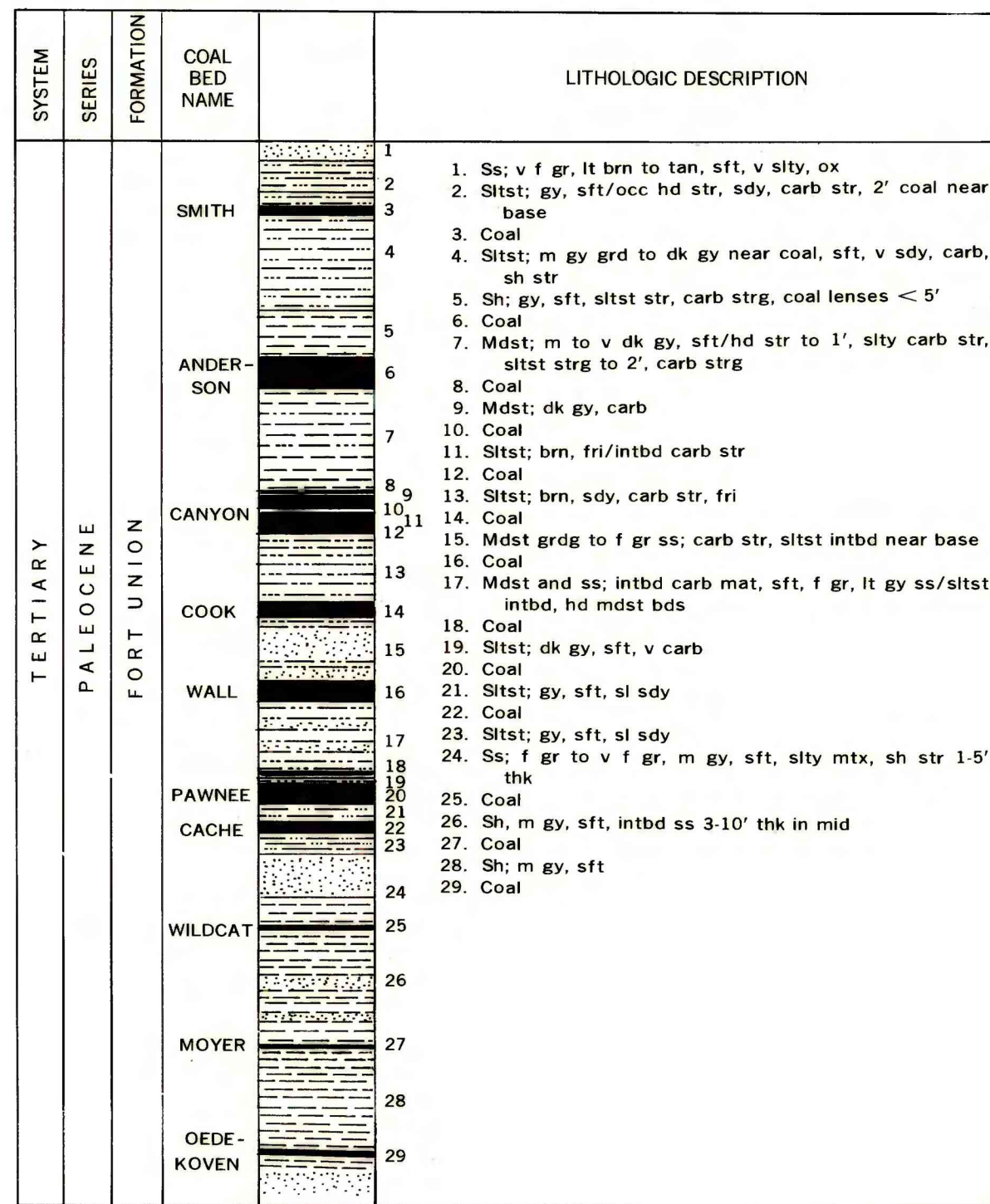
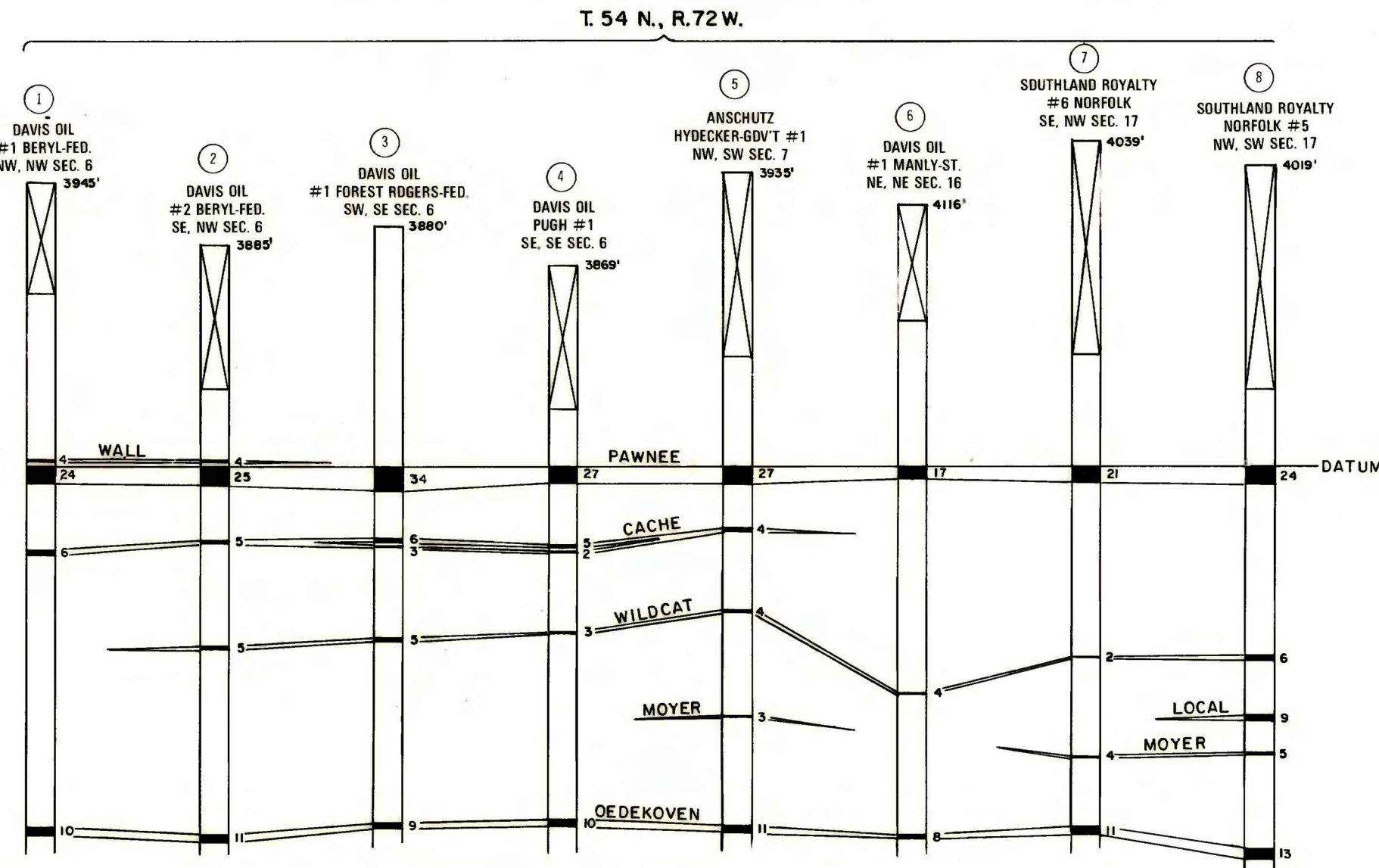


COMPOSITE COLUMNAR SECTION

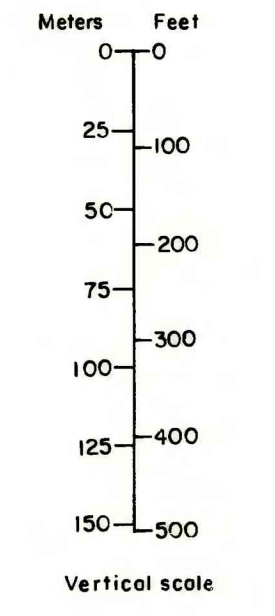


CORRELATION OF COAL BEDS IN DRILL HOLES



EXPLANATION

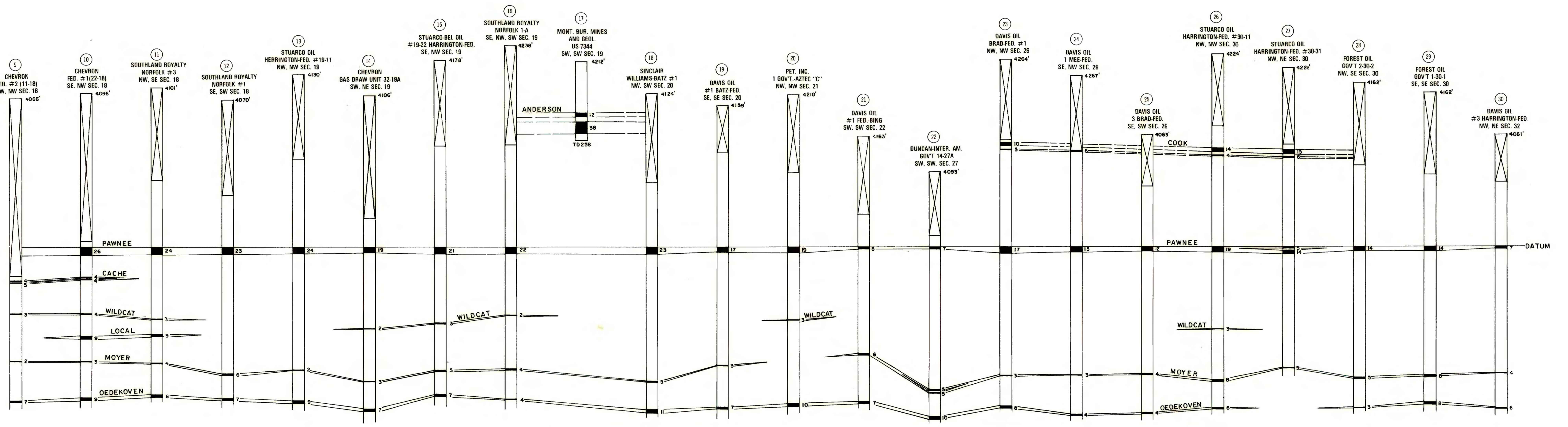
- ① Index number
- DAVIS OIL #1 BERYL-FED. NW, NW SEC. 6 3938' Company and well name
- Well location
- Elevation of drill hole at surface
- No record
- Rock interval
- Coal bed, showing thickness in feet
- Coal bed names
- Smith
- Anderson
- Canyon
- Cook
- Upper Cook
- Lower Cook
- Wall
- Pawnee
- Cache
- Wildcat
- Moyer
- Oedekoven
- Local



Column shown closed if at total depth

UNITED STATES  
DEPARTMENT OF THE INTERIOR  
GEOLOGICAL SURVEY

T. 54 N., R. 72 W.



COAL RESOURCE OCCURRENCE MAP OF THE PITCH DRAW QUADRANGLE, CAMPBELL COUNTY, WYOMING

BY  
IntraSearch  
1979

This report has not been edited for conformity with U.S. Geological Survey editorial standards or stratigraphic nomenclature.