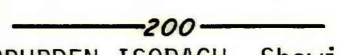
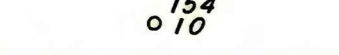
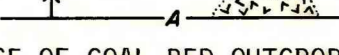
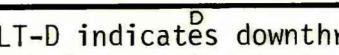


EXPLANATION

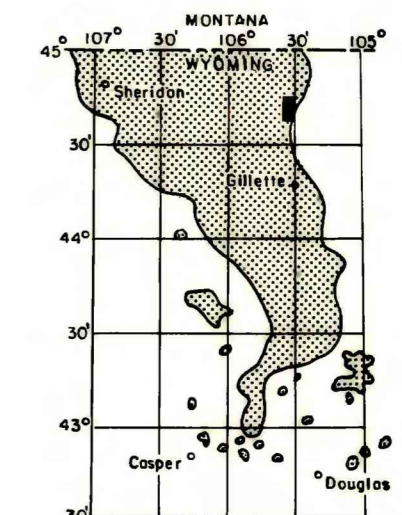
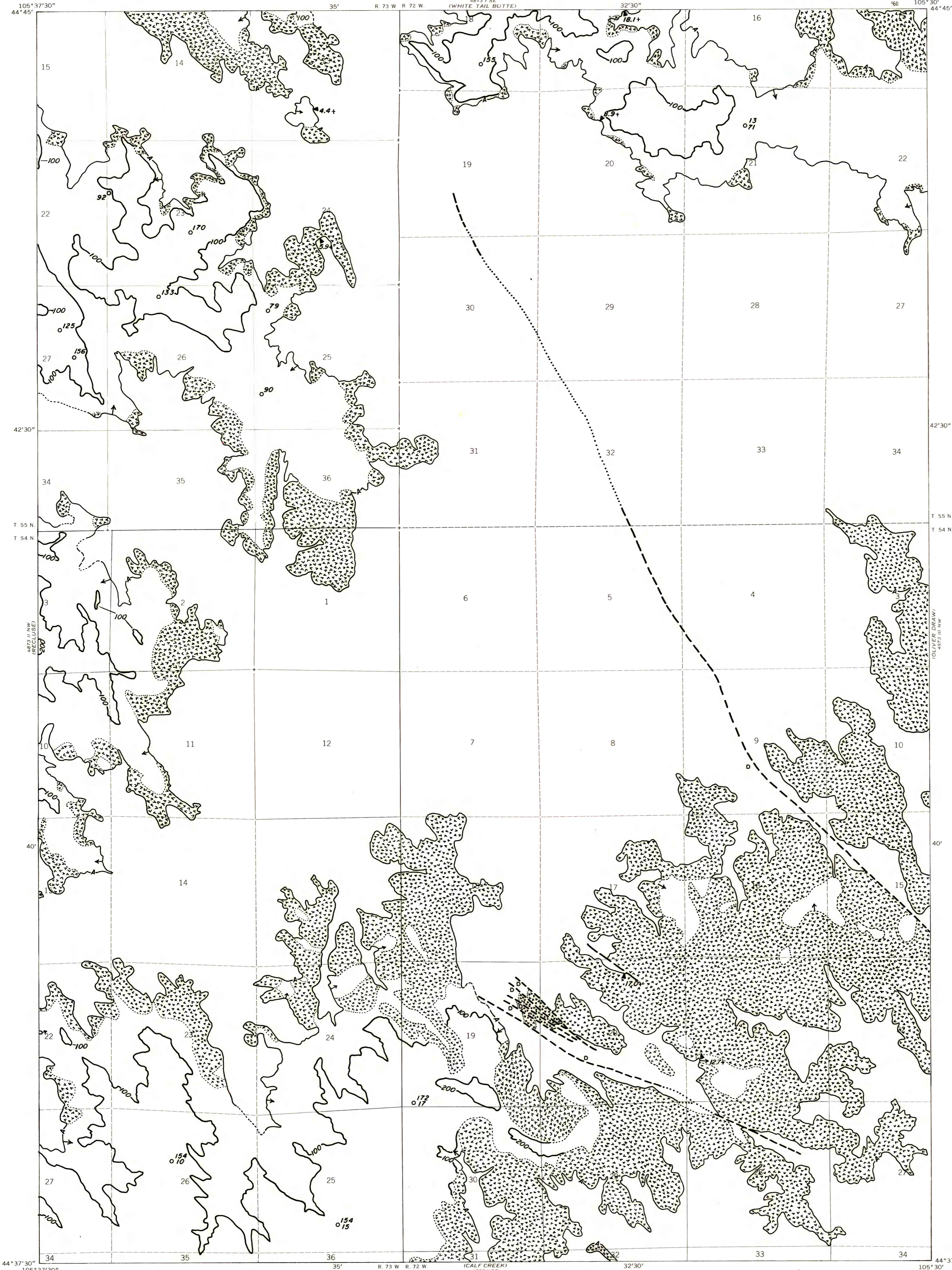
 **200**
OVERBURDEN ISOPACH— Showing thickness of overburden, in feet, from the surface to the top of the coal bed. Isopach interval 100 feet.

 **154**
010
DRILL HOLE— Showing thickness of overburden, in feet, from the surface to top of coal bed. Lower number indicates interburden thickness, in feet, between upper and lower splits of coal bed.


TRACE OF COAL BED OUTCROP— Arrow points toward the coal-bearing area. "V" symbol indicates burned rock with dotted line showing limit of burning. Dashed where inferred.

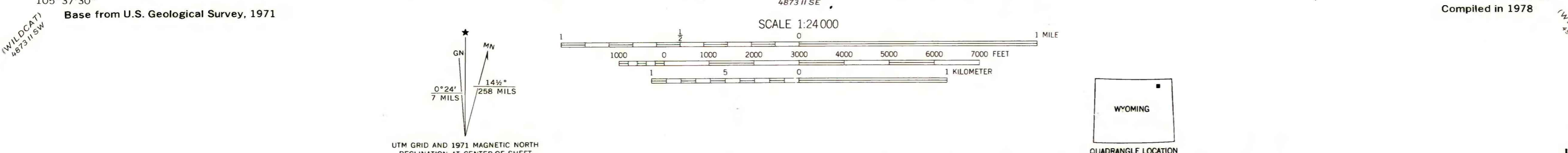

FAULT—D indicates downthrown side. Dashed where inferred, dotted where covered.

To convert feet to meters multiply feet by 0.3048.



MAP SHOWING LOCATION OF THE PITCH DRAW QUADRANGLE AND THE POWDER RIVER BASIN KNOWN RECOVERABLE COAL RESOURCE AREA (STIPPLED), WYOMING

This report has not been edited for conformity with U.S. Geological Survey editorial standards or stratigraphic nomenclature.



COAL RESOURCE OCCURRENCE MAP OF THE PITCH DRAW QUADRANGLE, CAMPBELL COUNTY, WYOMING

BY
IntraSearch
1979