

EXPLANATION

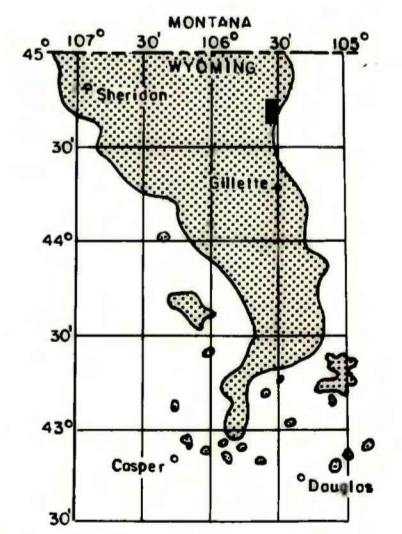
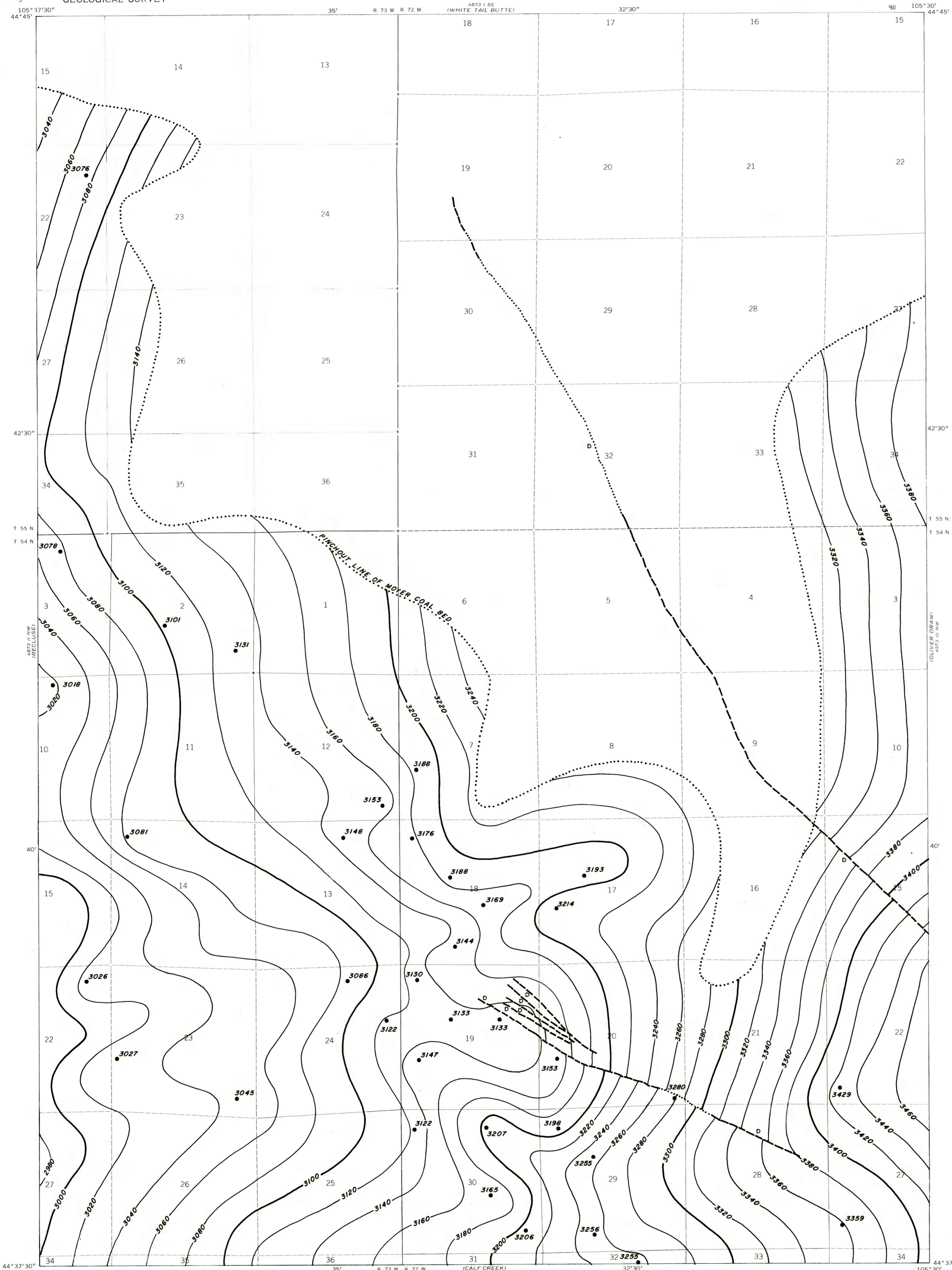
3100
3080

STRUCTURE CONTOURS—Drawn on top of coal bed. Contour interval 20 feet. Datum is mean sea level.

3131
DRILL HOLE—Showing elevation at top of coal bed, in feet.

To convert feet to meters, multiply feet by 0.3048.

D
FAULT—D indicates downthrown side. Dashed where inferred, dotted where covered.

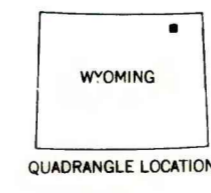
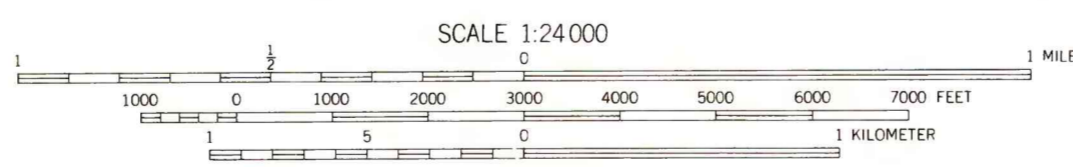
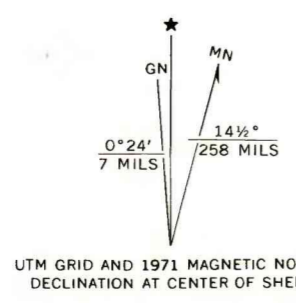


MAP SHOWING LOCATION OF THE PITCH DRAW QUADRANGLE AND THE POWDER RIVER BASIN KNOWN RECOVERABLE COAL RESOURCE AREA (STIPPLED), WYOMING

This report has not been edited for conformity with U.S. Geological Survey editorial standards or stratigraphic nomenclature.

Base from U.S. Geological Survey, 1971

Compiled in 1978



COAL RESOURCE OCCURRENCE MAP OF THE PITCH DRAW QUADRANGLE, CAMPBELL COUNTY, WYOMING

BY
IntraSearch
1979