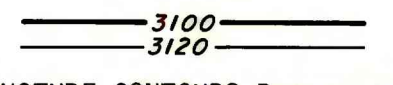


EXPLANATION

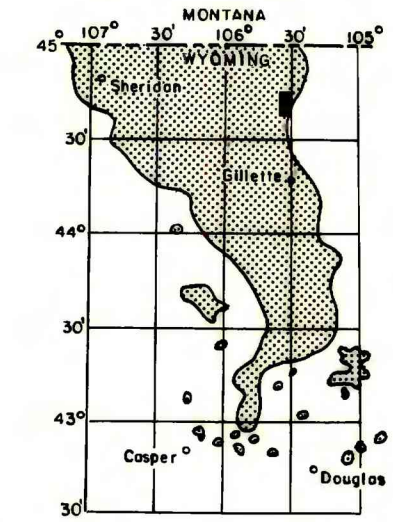
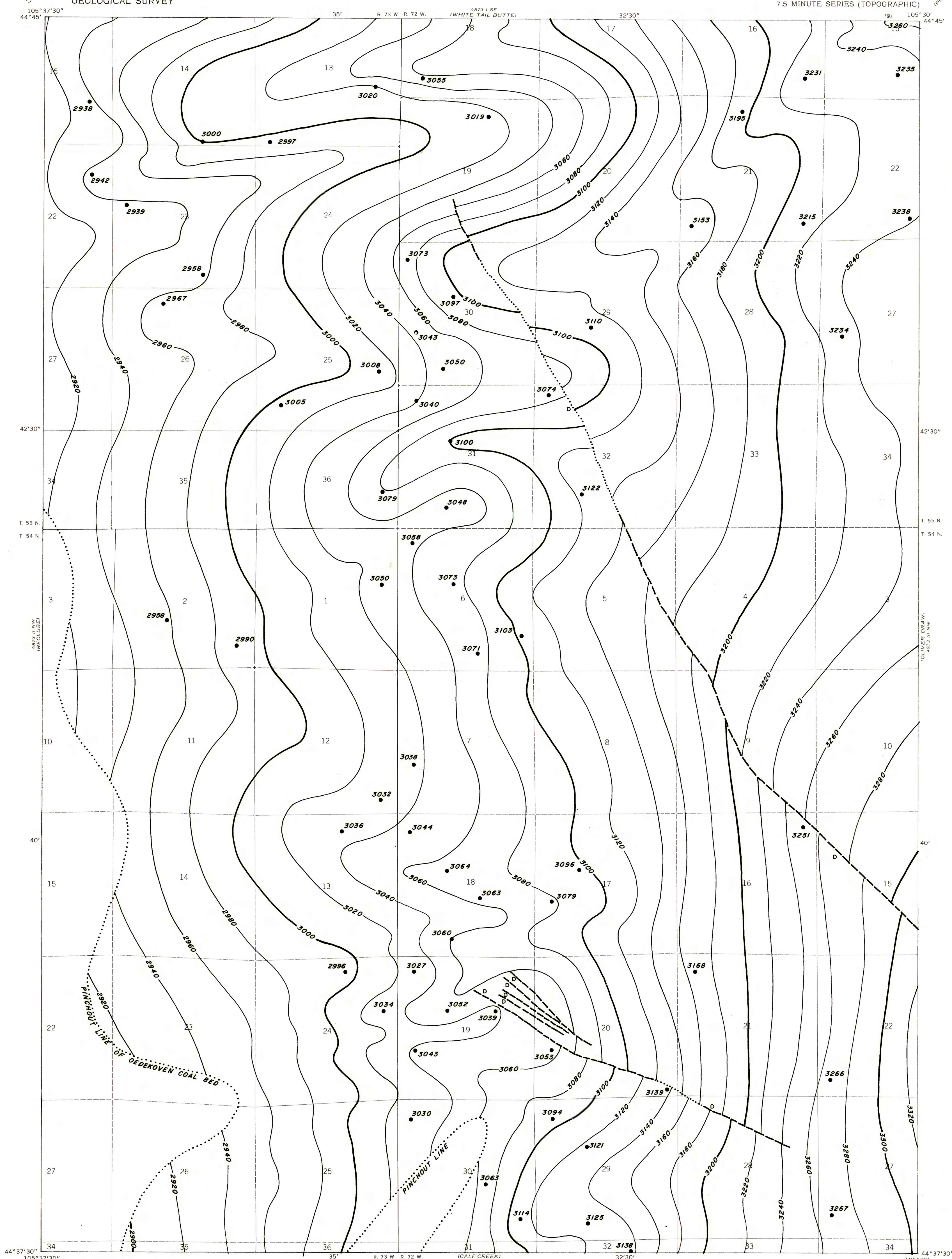


STRUCTURE CONTOURS—Drawn on top of coal bed. Contour interval 20 feet. Datum is mean sea level.

DRILL HOLE—Showing elevation at top of coal bed, in feet.

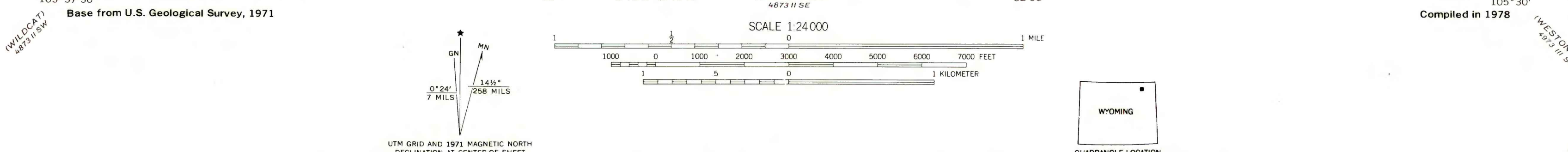
To convert feet to meters, multiply feet by 0.3048.

FAULT—D indicates downthrown side. Dashed where inferred, dotted where covered.



MAP SHOWING LOCATION OF THE PITCH DRAW QUADRANGLE AND THE POWDER RIVER BASIN KNOWN RECOVERABLE COAL RESOURCE AREA (STIPPLED), WYOMING

This report has not been edited for conformity with U.S. Geological Survey editorial standards or stratigraphic nomenclature.



**COAL RESOURCE OCCURRENCE MAP OF THE PITCH DRAW QUADRANGLE, CAMPBELL COUNTY, WYOMING**

BY  
**IntraSearch**  
1979