

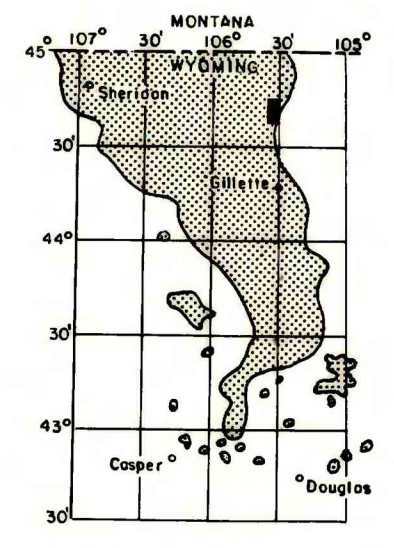
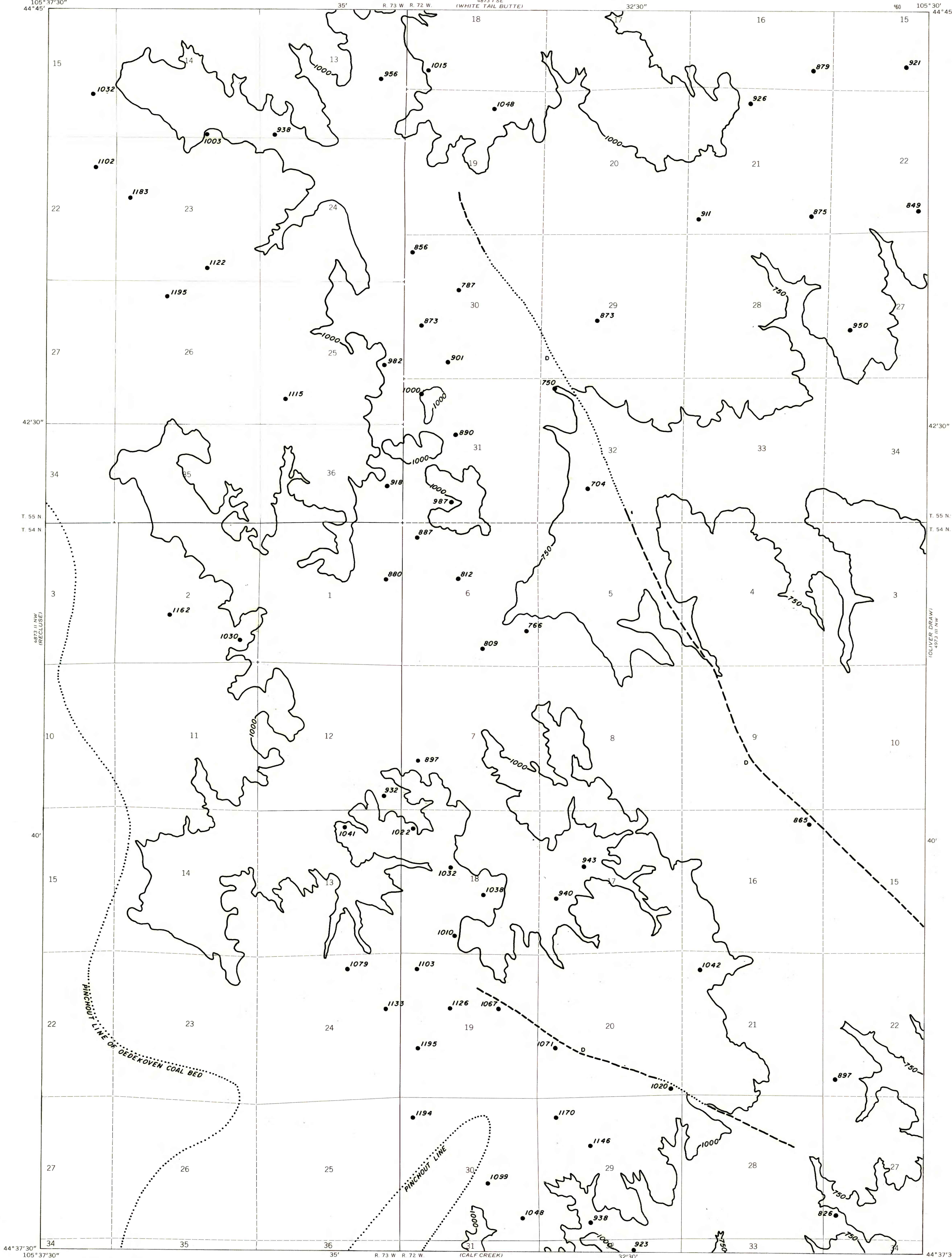
EXPLANATION

— 750 —
OVERBURDEN ISOPACH— Showing thickness of overburden, in feet, from the surface to the top of the coal bed. Isopach interval 250 feet.

• 1032
DRILL HOLE— Showing thickness of overburden, in feet, from the surface to top of coal bed.

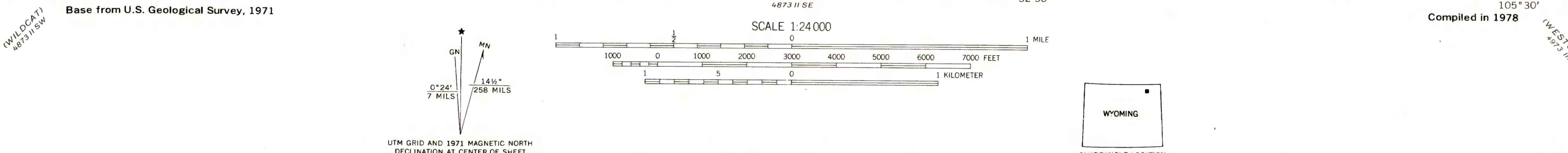
To convert feet to meters
multiply feet by 0.3048.

— D —
FAULT— D indicates downthrown side. Dashed where inferred, dotted where covered.



MAP SHOWING LOCATION OF THE PITCH DRAW QUADRANGLE AND THE POWDER RIVER BASIN KNOWN RECOVERABLE COAL RESOURCE AREA (STIPPLED), WYOMING

This report has not been edited for conformity with U.S. Geological Survey editorial standards or stratigraphic nomenclature.



COAL RESOURCE OCCURRENCE MAP OF THE PITCH DRAW QUADRANGLE, CAMPBELL COUNTY, WYOMING
BY
IntraSearch
1979