

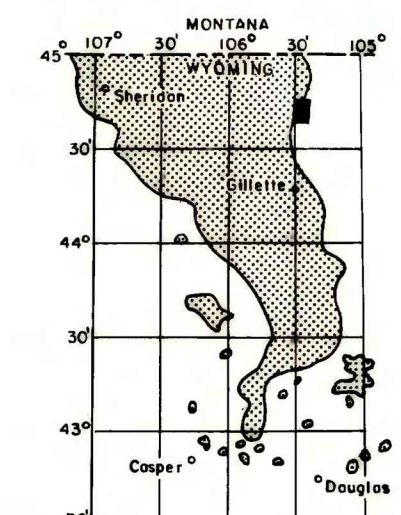
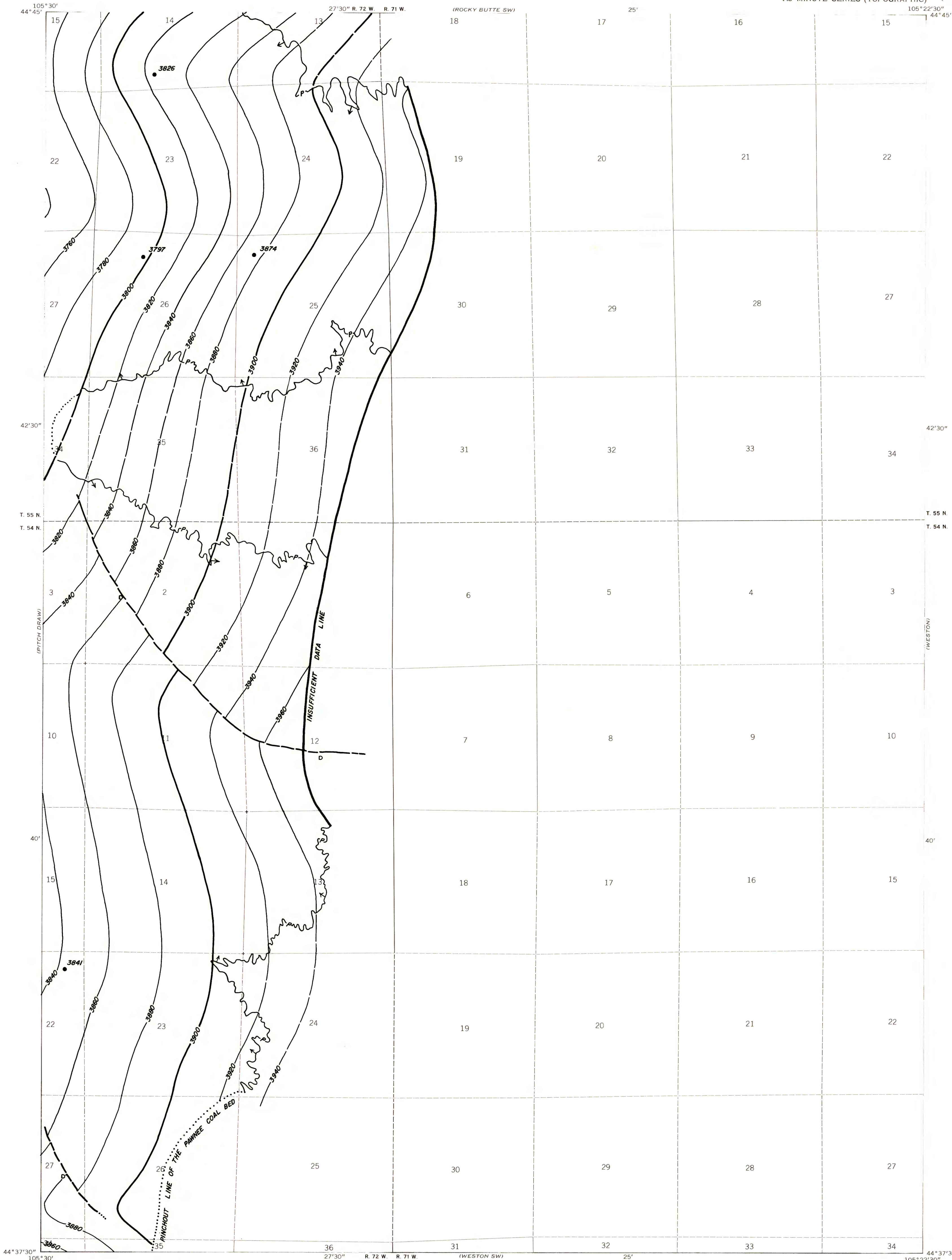
EXPLANATION

— 3800 —
— 3860 —
STRUCTURE CONTOURS—Drawn on top of coal bed. Contour interval 20 feet. Datum is mean sea level. Dashed where coal is burned or eroded.

● 3826
DRILL HOLE—Showing elevation at top of coal bed, in feet.

↑ P ↑
TRACE OF COAL BED OUTCROP—Arrow points toward the coal-bearing area. Dashed where inferred.

To convert feet to meters, multiply feet by 0.3048.



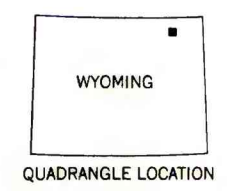
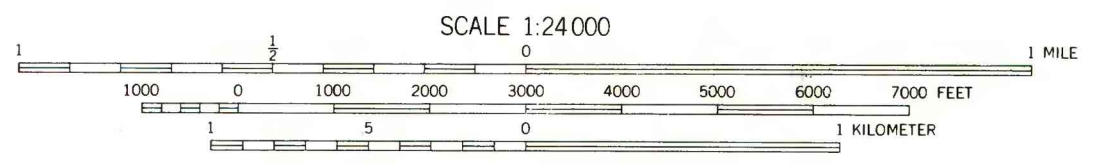
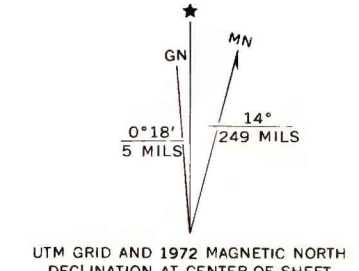
MAP SHOWING LOCATION OF THE OLIVER DRAW QUADRANGLE AND THE POWDER RIVER BASIN KNOWN RECOVERABLE COAL RESOURCE AREA (STIPPLED), WYOMING

This report has not been edited for conformity with U.S. Geological Survey editorial standards or stratigraphic nomenclature.

PLATE 5
STRUCTURE CONTOUR MAP OF
PAWNEE COAL BED

COAL RESOURCE OCCURRENCE MAP OF THE OLIVER DRAW
QUADRANGLE, CAMPBELL COUNTY, WYOMING

BY
IntraSearch
1979



Base from U.S. Geological Survey, 1972

Compiled in 1978

WHITE TAIL BUTTE
1922 11 SE

1972 11 SE
(TUTTLE DRAW)

COAL CREEK
1923 11 SE

1975 11 SE
(LOVE TREE CREEK)