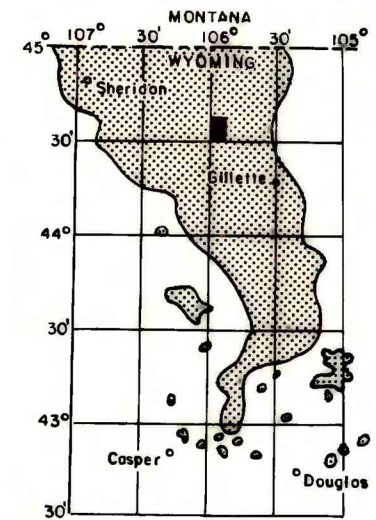
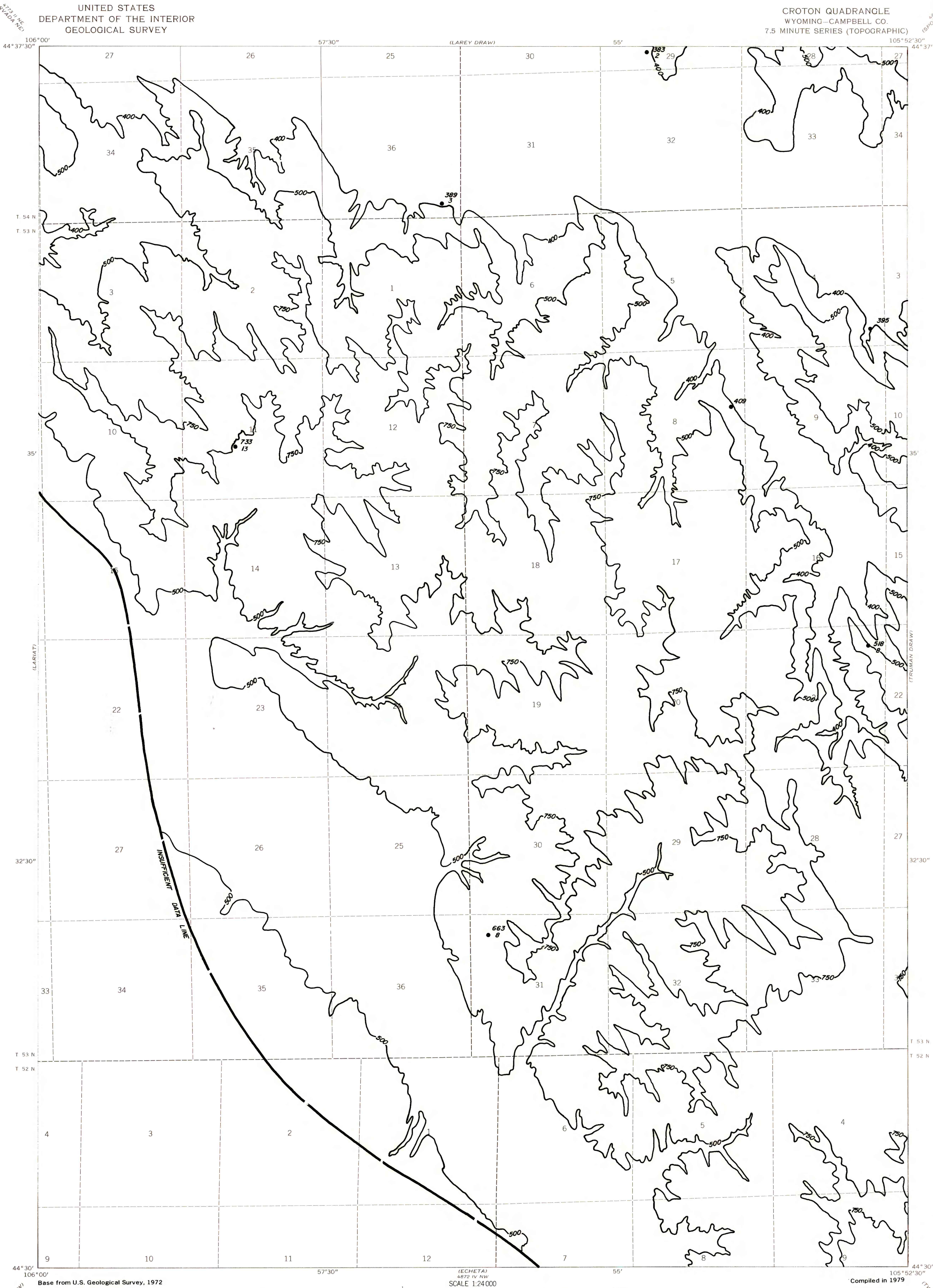


EXPLANATION

— 500 —  
OVERBURDEN ISOPACH—Showing thickness of overburden, in feet, from the surface to the top of the coal bed. Isopach interval variable feet.

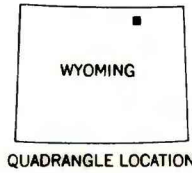
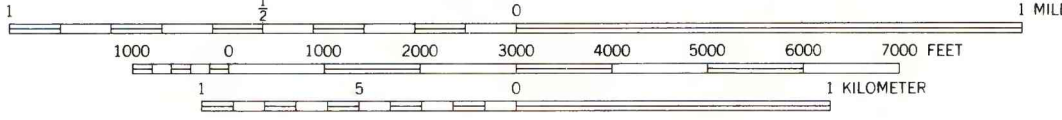
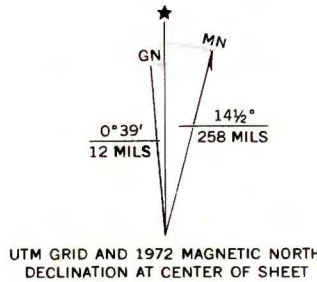
• 663  
8  
DRILL HOLE— Showing thickness of overburden, in feet, from the surface to top of coal bed. Lower number indicates interburden thickness, in feet, between upper and lower splits of coal bed.

To convert feet to meters  
multiply feet by 0.3048.



MAP SHOWING LOCATION OF THE  
CROTON QUADRANGLE AND THE  
POWDER RIVER BASIN KNOWN  
RECOVERABLE COAL RESOURCE  
AREA (STIPPLED), WYOMING

This report has not been edited  
for conformity with U.S. Geological  
Survey editorial standards or  
stratigraphic nomenclature.



COAL RESOURCE OCCURRENCE MAP OF THE CROTON  
QUADRANGLE, CAMPBELL COUNTY, WYOMING

BY  
IntraSearch  
1979

PLATE 21  
ISOPACH MAP OF  
OVERBURDEN OF  
SMITH COAL BED