

EXPLANATION

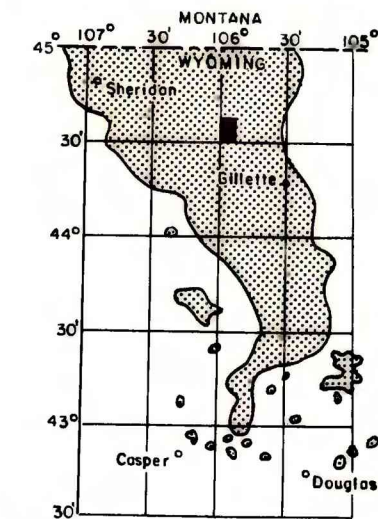
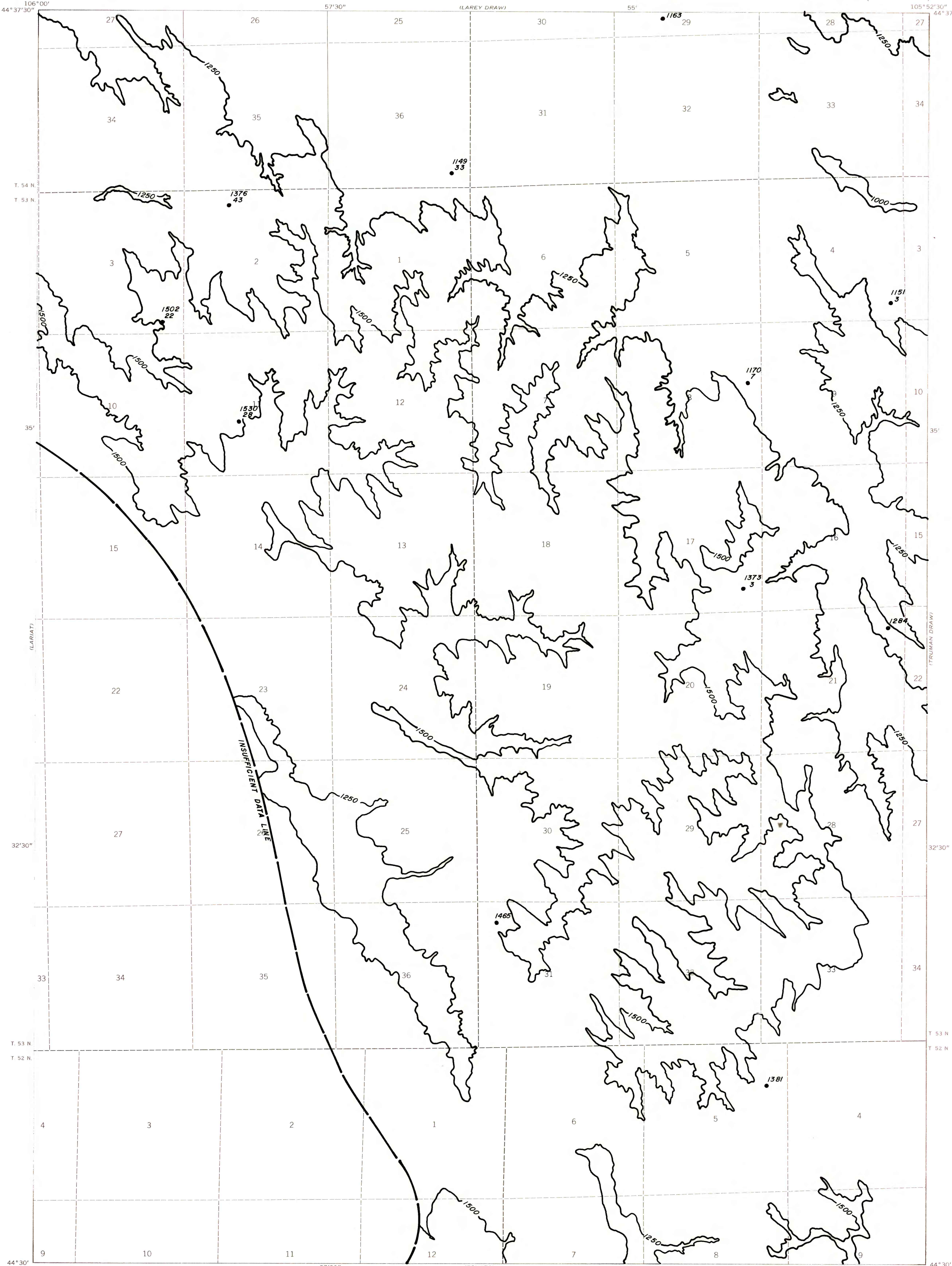
————— 1250 —————

OVERBURDEN ISOPACH—Showing thickness of overburden, in feet, from the surface to the top of the coal bed. Isopach interval 250 feet.

• 1163 • 1376
• 43 • 43

DRILL HOLE—Showing thickness of overburden, in feet, from the surface to top of coal bed. Lower number indicates interburden thickness, in feet, between upper and lower splits of coal bed.

To convert feet to meters,
multiply feet by 0.3048.



MAP SHOWING LOCATION OF THE
CROTON QUADRANGLE AND THE
POWDER RIVER BASIN KNOWN
RECOVERABLE COAL RESOURCE
AREA (STIPPLED), WYOMING

This report has not been edited
for conformity with U.S. Geological
Survey editorial standards or
stratigraphic nomenclature.

COAL RESOURCE OCCURRENCE MAP OF THE CROTON
QUADRANGLE, CAMPBELL COUNTY, WYOMING

BY
IntraSearch
1979

PLATE 46
ISOPACH MAP OF
OVERBURDEN OF
WALL COAL BED