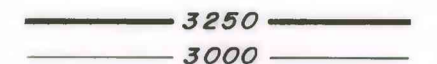
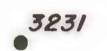


EXPLANATION

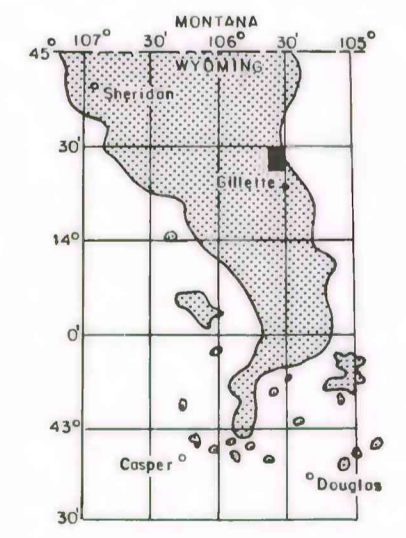
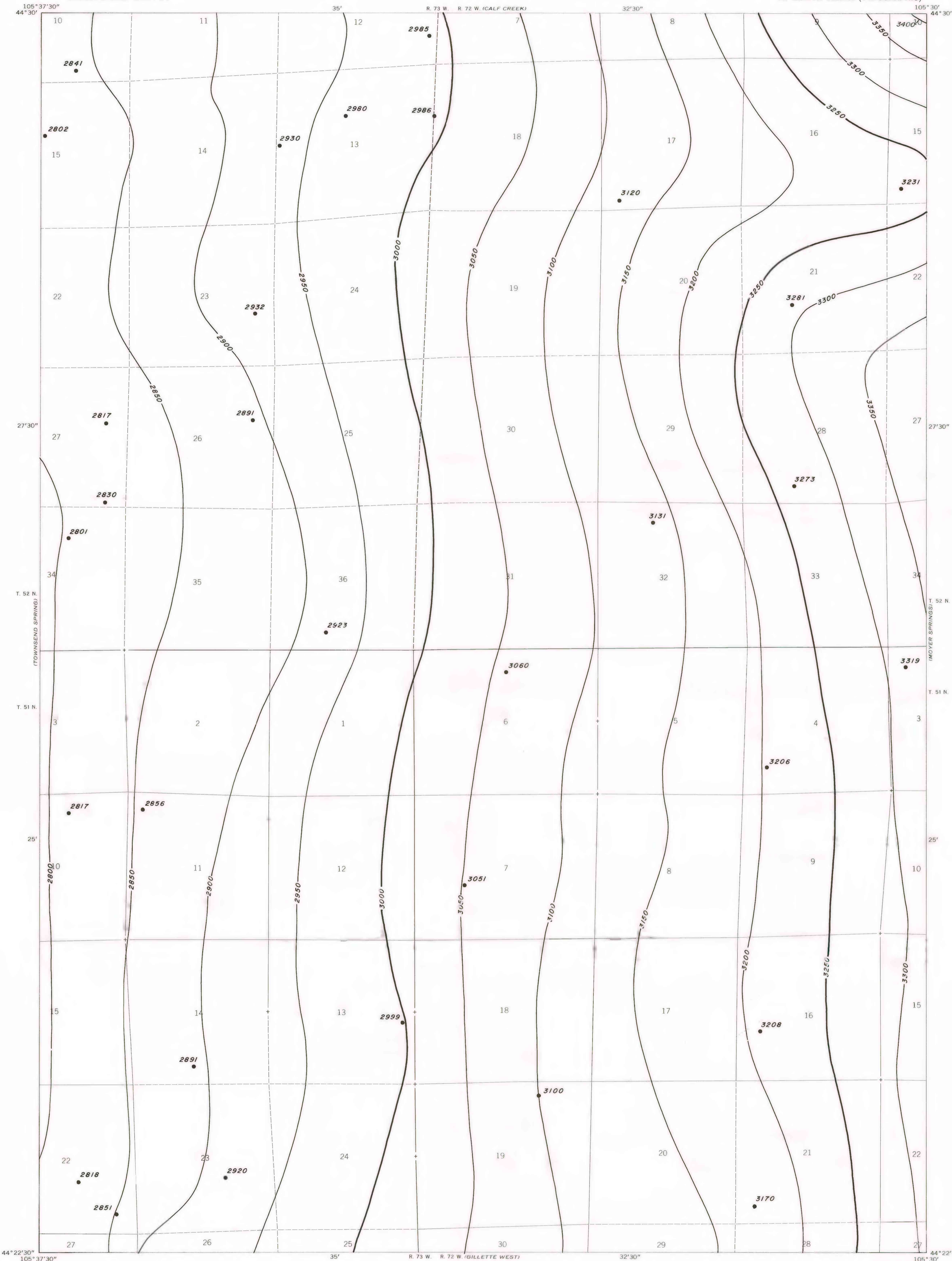


STRUCTURE CONTOURS—Drawn on top of coal bed. Contour interval 50 feet. Datum is mean sea level.



DRILL HOLE—Showing elevation at top of coal bed, in feet.

To convert feet to meters multiply feet by 0.3048.



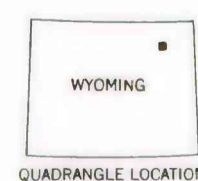
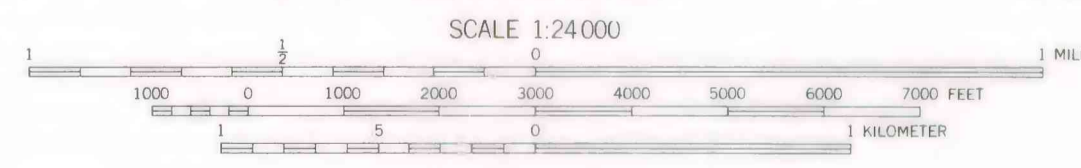
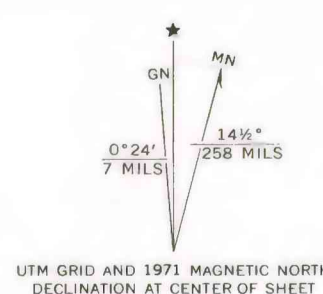
MAP SHOWING LOCATION OF THE RAWHIDE SCHOOL QUADRANGLE AND THE POWDER RIVER BASIN KNOWN RECOVERABLE COAL RESOURCE AREA (STIPPLED), WYOMING

This report has not been edited for conformity with U.S. Geological Survey editorial standards or stratigraphic nomenclature.

COAL RESOURCE OCCURRENCE MAP OF THE RAWHIDE SCHOOL QUADRANGLE, CAMPBELL COUNTY, WYOMING

BY
IntraSearch
1978

PLATE 35
STRUCTURE CONTOUR MAP OF
OEDEKOVEN COAL BED



Base from U.S. Geological Survey, 1971

Compiled in 1978