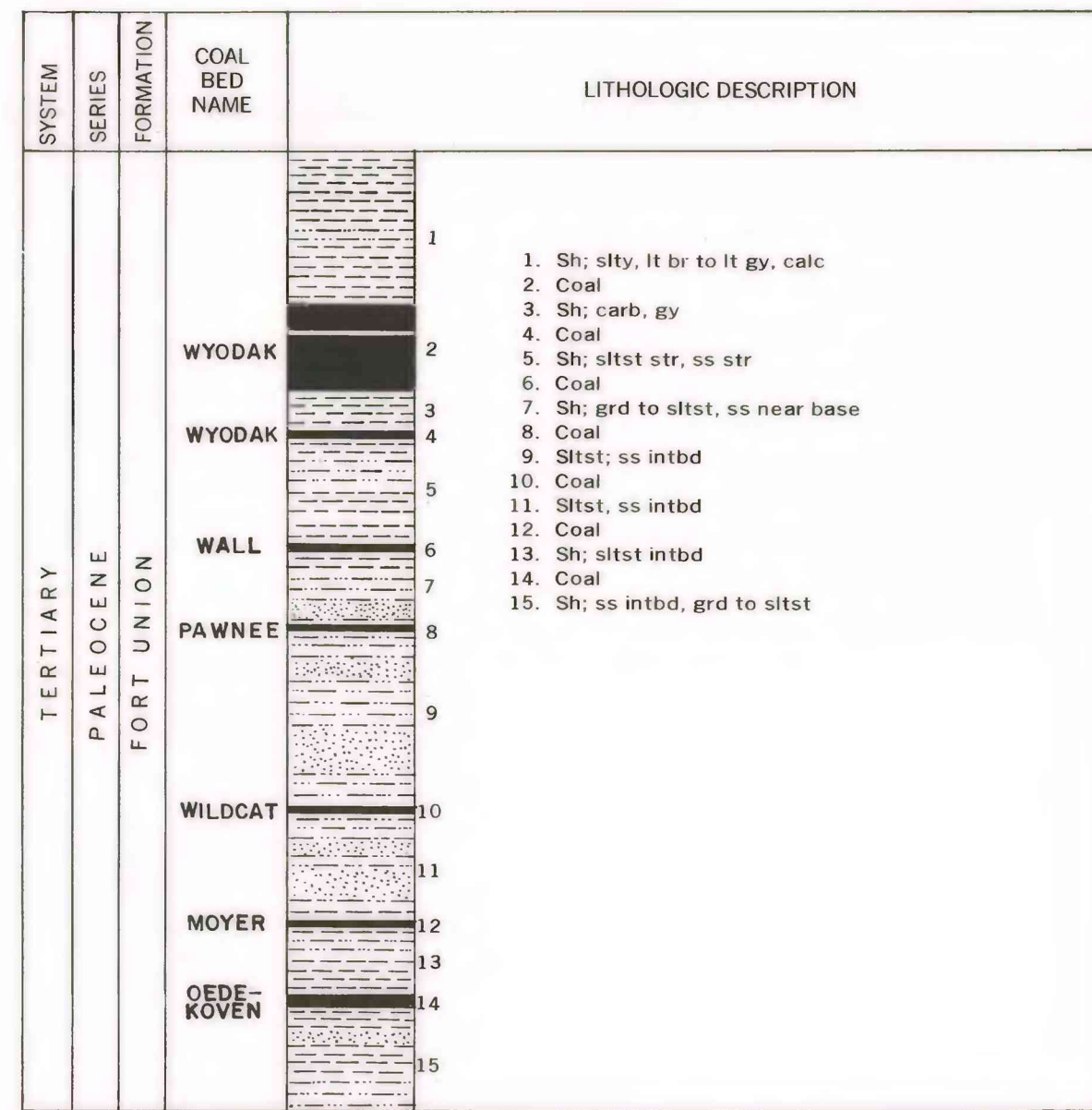
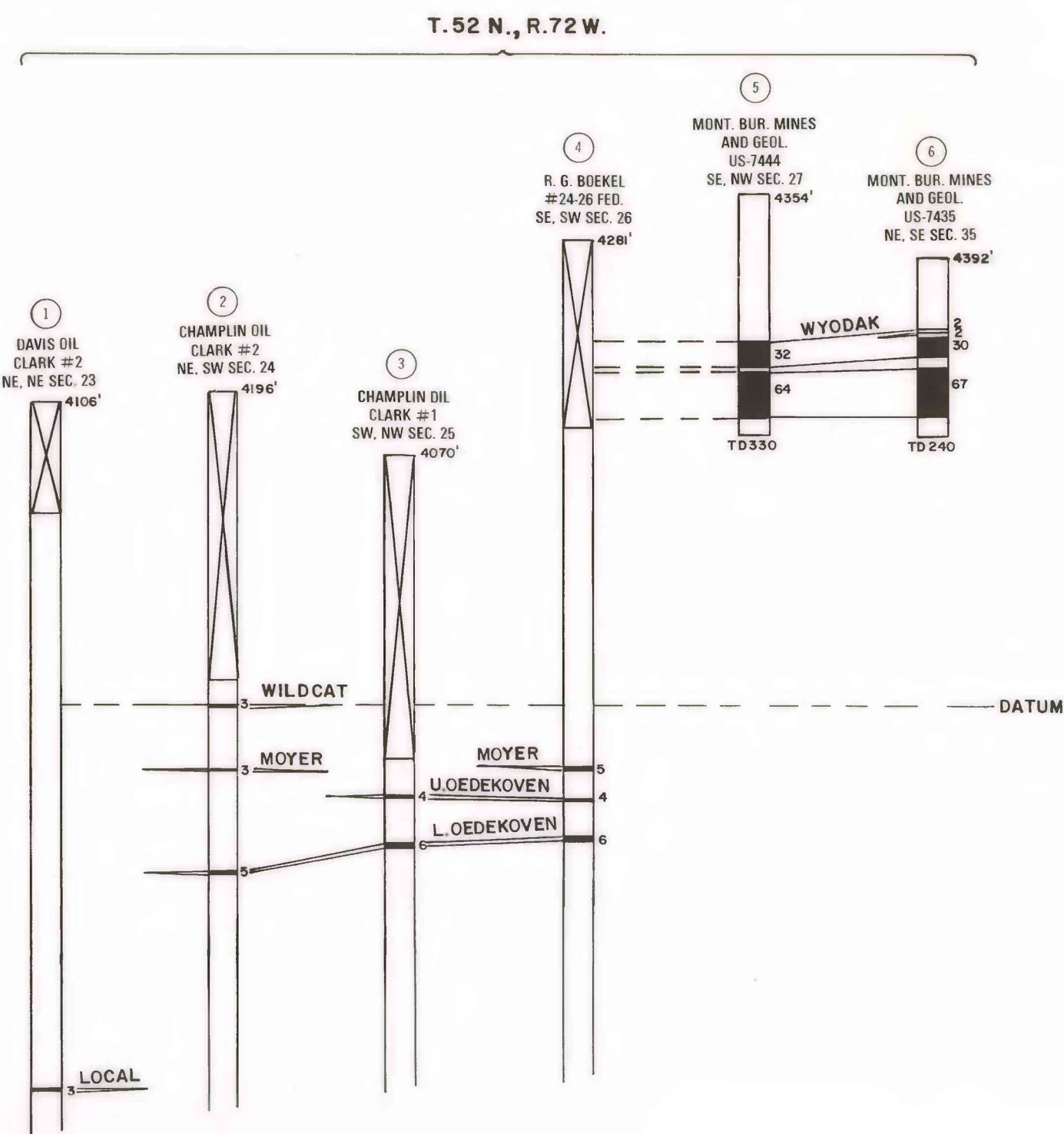


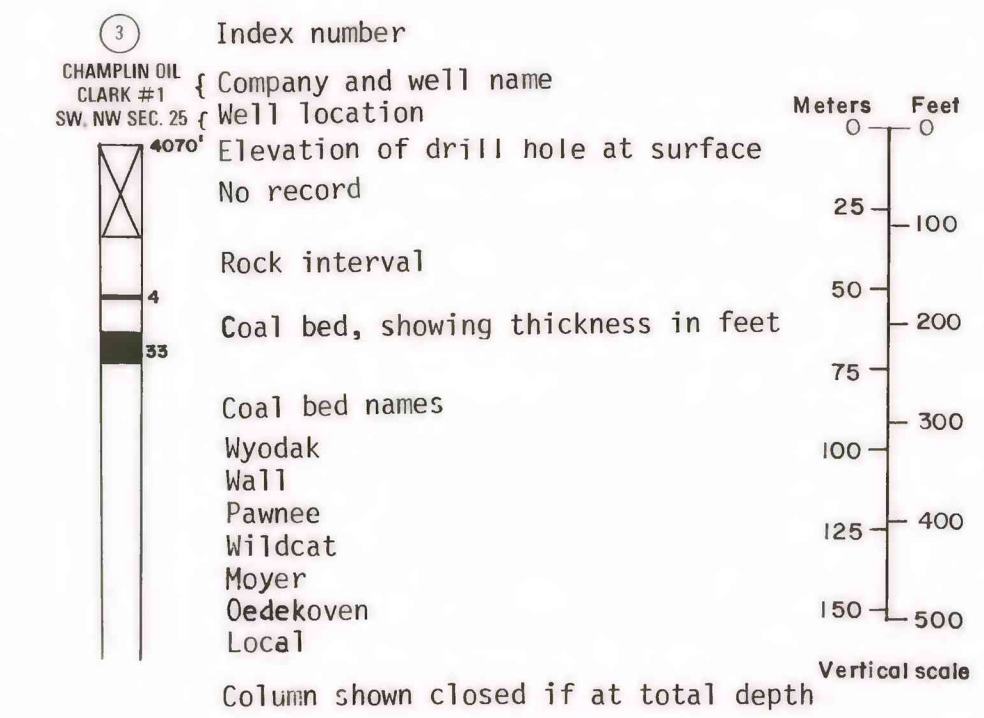
COMPOSITE COLUMNAR SECTION



CORRELATION OF COAL BEDS IN DRILL HOLES

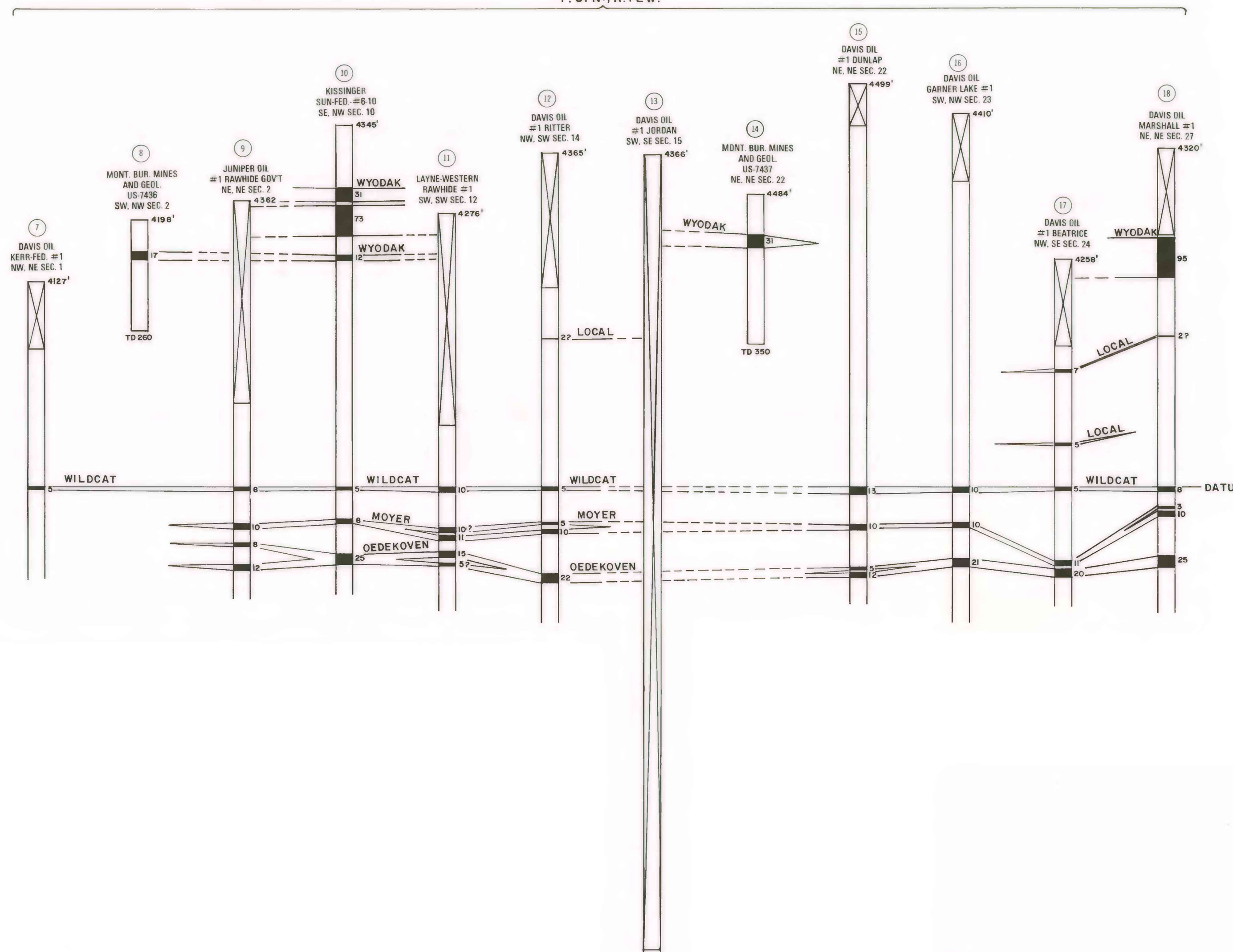


EXPLANATION



NOTE: The Wyodak coal bed is equivalent to the Anderson, Canyon and Cook coal beds in portions of the Powder River Basin in northeastern Wyoming.

T. 51 N., R. 72 W.



This report has not been edited for conformity with U.S. Geological Survey editorial standards or stratigraphic nomenclature.

COAL RESOURCE OCCURRENCE MAP OF MOYER SPRINGS QUADRANGLE, CAMPBELL COUNTY, WYOMING