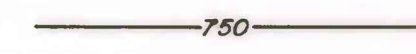

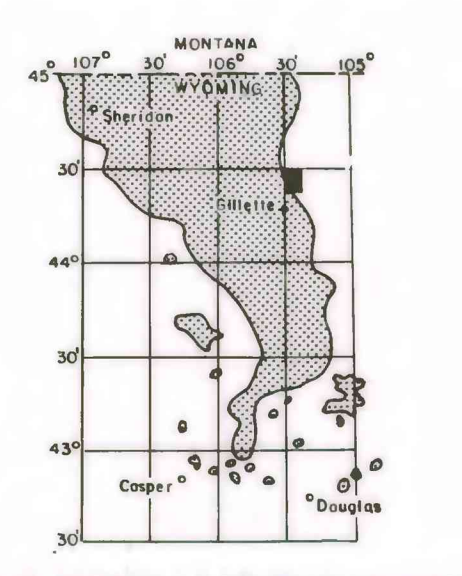
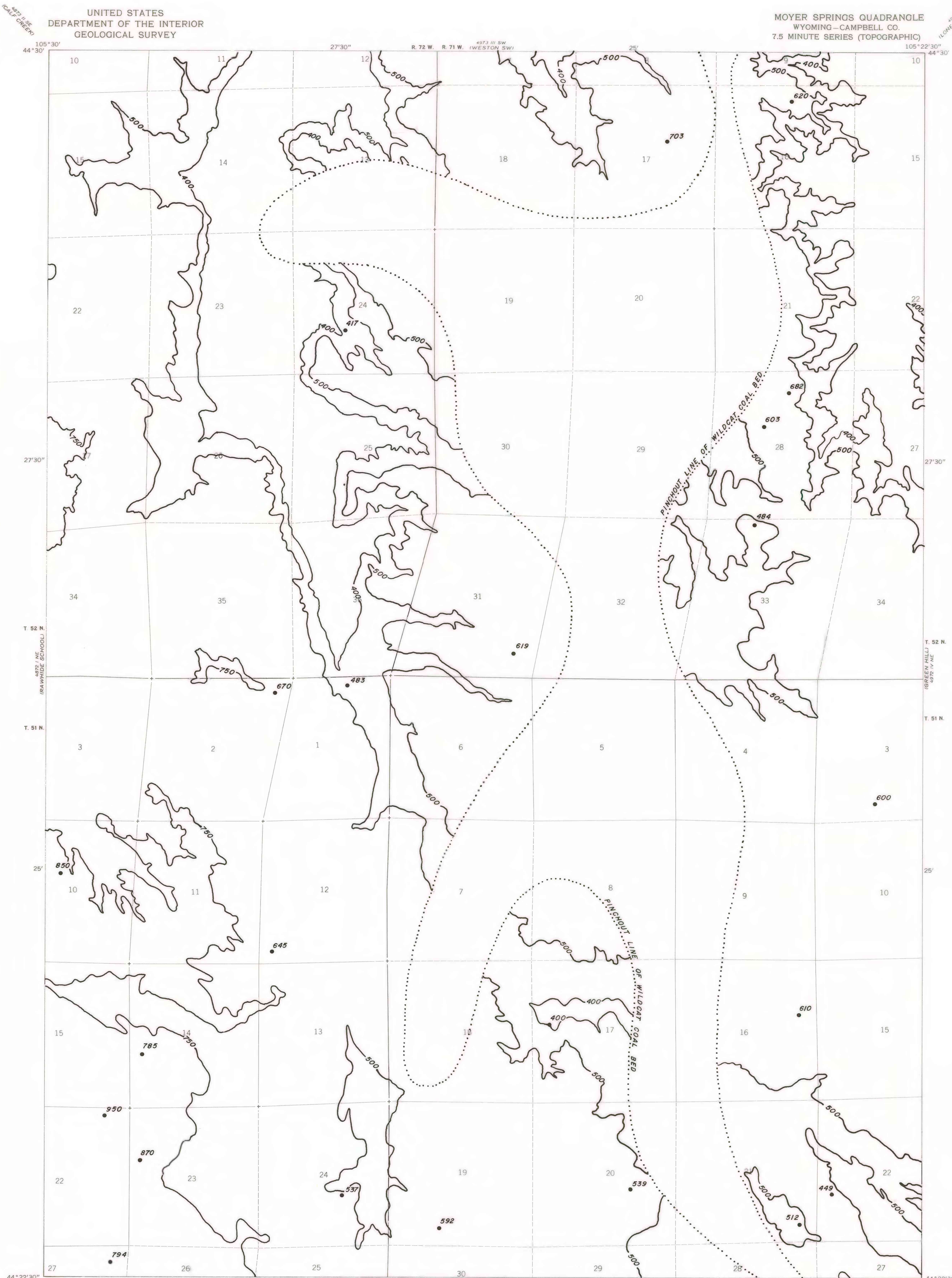


EXPLANATION

 750
OVERBURDEN ISOPACH—Showing thickness of overburden, in feet, from the surface to the top of the coal bed. Isopach interval variable feet.

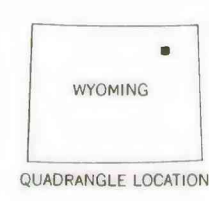
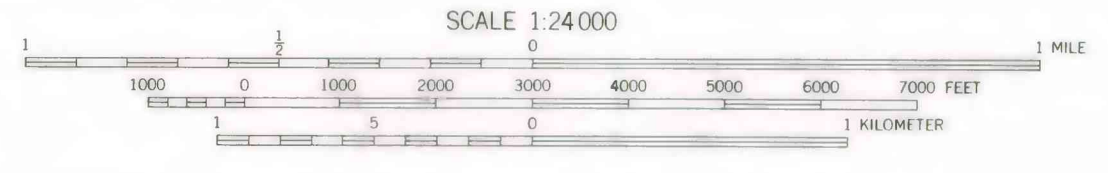
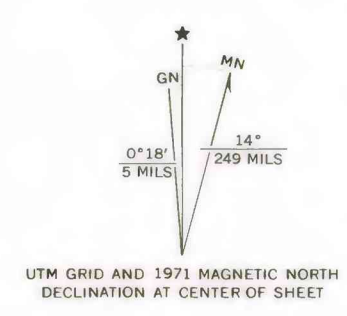
 620
DRILL HOLE—Showing thickness of overburden, in feet, from the surface to top of coal bed.

To convert feet to meters
multiply feet by 0.3048.



MAP SHOWING LOCATION OF THE MOYER SPRINGS QUADRANGLE AND THE POWDER RIVER BASIN KNOWN RECOVERABLE COAL RESOURCE AREA (STIPPLED), WYOMING

This report has not been edited for conformity with U.S. Geological Survey editorial standards or stratigraphic nomenclature



COAL RESOURCE OCCURRENCE MAP OF THE MOYER SPRINGS QUADRANGLE, CAMPBELL COUNTY, WYOMING

BY
intraSearch
1979

PLATE II
ISOPACH MAP OF
OVERBURDEN OF
WILDCAT COAL BED

Base from U.S. Geological Survey, 1971

Compiled in 1978