

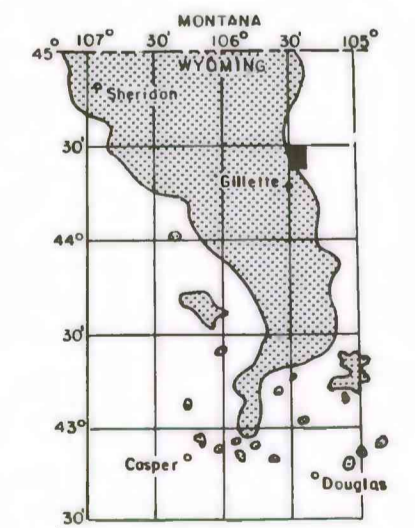
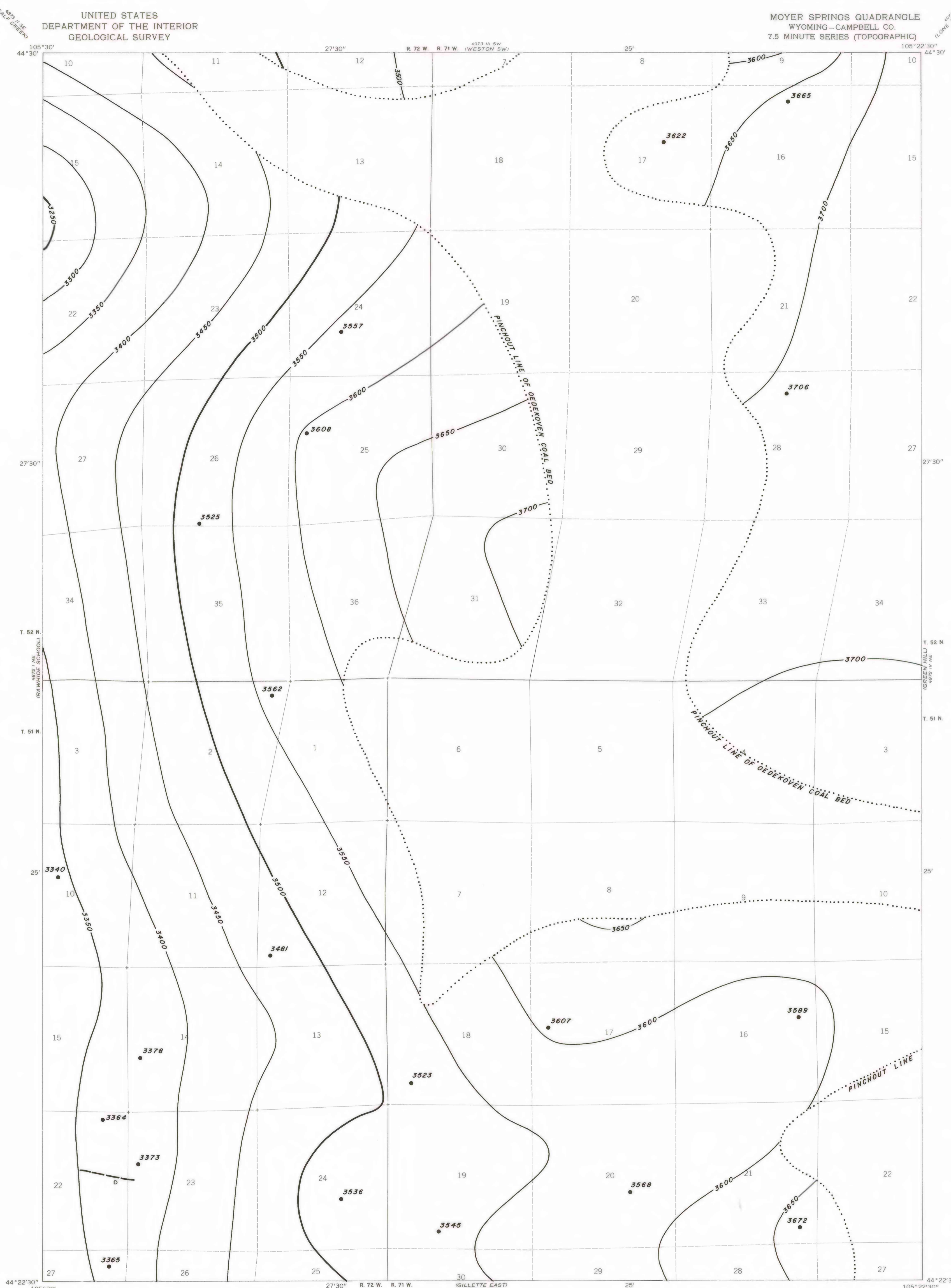
EXPLANATION

— 3500 —  
— 3550 —  
STRUCTURE CONTOURS—Drawn on top of coal bed. Contour interval 50 feet. Datum is mean sea level.

• 3665  
DRILL HOLE—Showing elevation at top of coal bed, in feet.

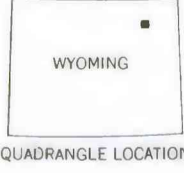
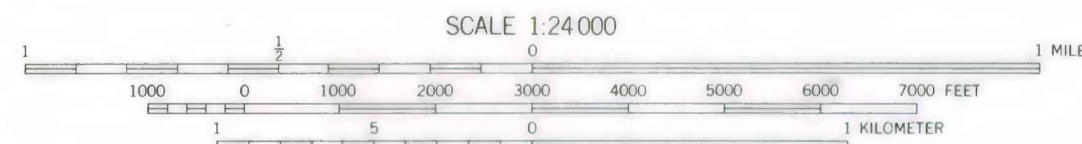
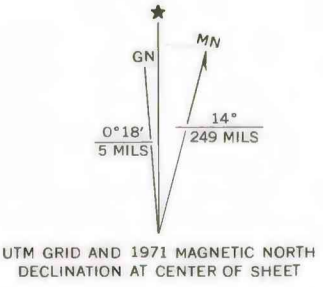
To convert feet to meters multiply feet by 0.3048.

— D —  
FAULT—D indicates downthrown side.



MAP SHOWING LOCATION OF THE MOYER SPRINGS QUADRANGLE AND THE POWDER RIVER BASIN KNOWN RECOVERABLE COAL RESOURCE AREA (STIPPLED), WYOMING

This report has not been edited for conformity with U.S. Geological Survey editorial standards or stratigraphic nomenclature



# COAL RESOURCE OCCURRENCE MAP OF THE MOYER SPRINGS QUADRANGLE, CAMPBELL COUNTY, WYOMING

BY  
**IntraSearch**  
1979

PLATE 20  
STRUCTURE CONTOUR MAP OF  
OEDEKEOVEN COAL BED