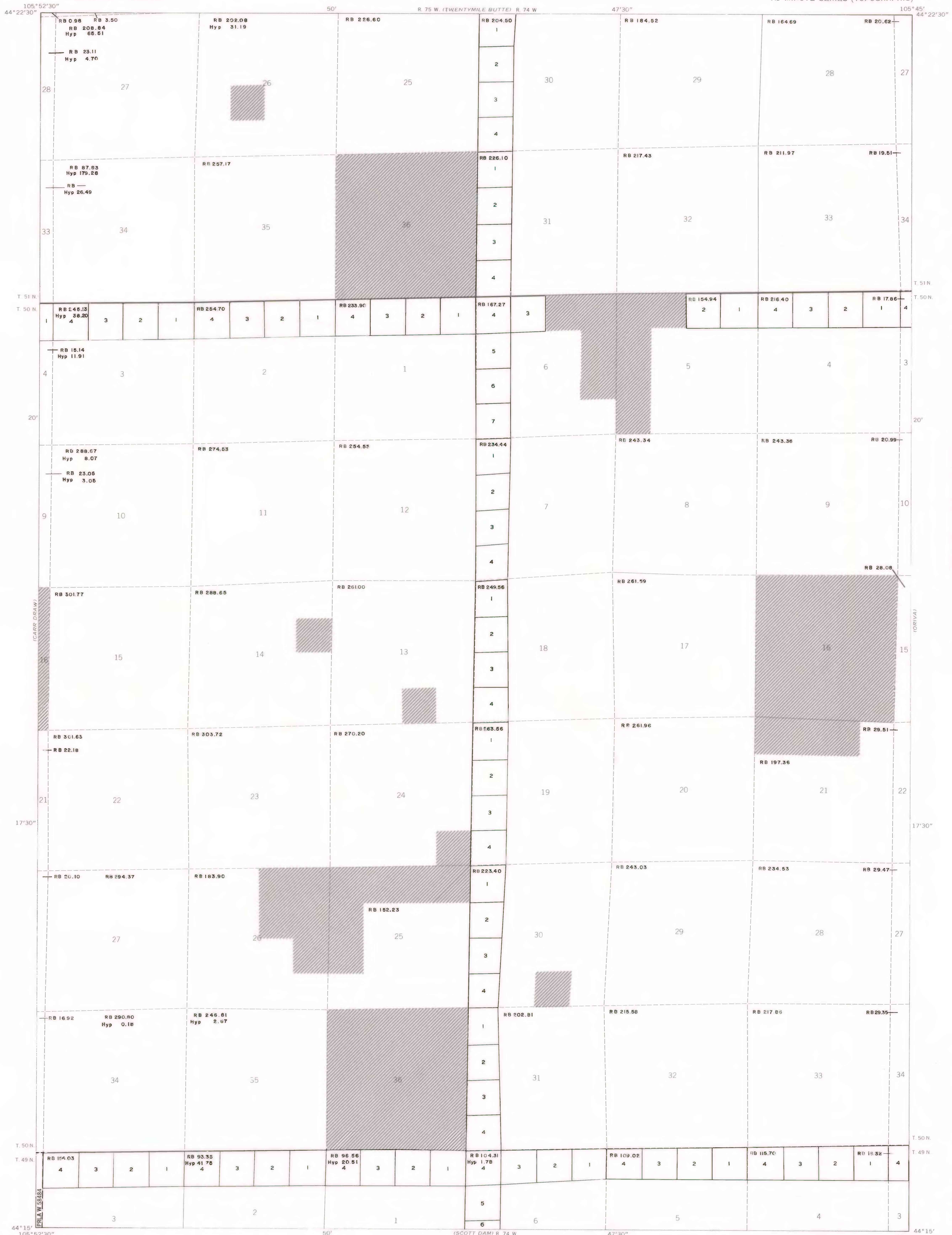


44°22'30"



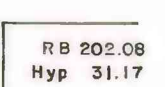
EXPLANATION



NON-FEDERAL COAL LAND



PREFERENCE RIGHT LEASE APPLICATION-PRLA

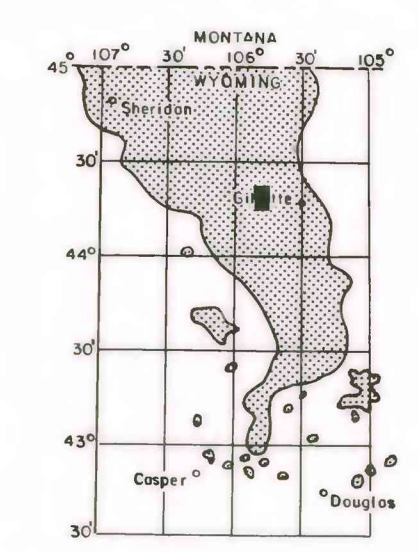


TOTAL RESERVE BASE (RB) AND HYPOTHETICAL RESOURCES (Hyp) OF COAL PER SECTION-In millions of short tons.

4	3	2	1
5	6		
6	7		
7	8		

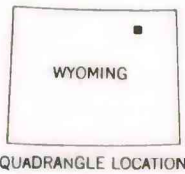
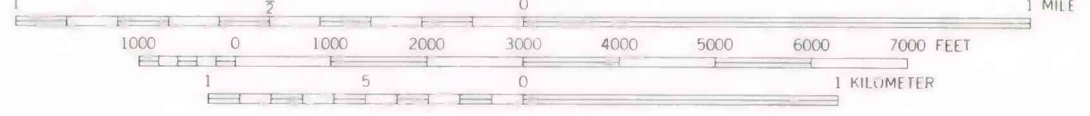
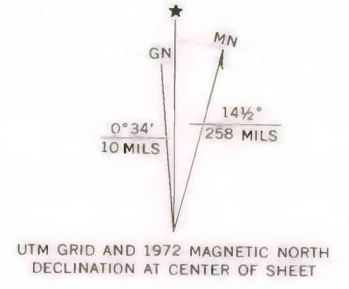
SECTION OF LAND-Showing lots and lot numbers.

To convert short tons to metric tons, multiply short tons by 0.9072.



MAP SHOWING LOCATION OF THE JEFFERS DRAW QUADRANGLE AND THE POWDER RIVER BASIN KNOWN RECOVERABLE COAL RESOURCE AREA (STIPPLED), WYOMING

Base from U.S. Geological Survey, 1972



COAL RESOURCE OCCURRENCE MAP OF THE JEFFERS DRAW QUADRANGLE, CAMPBELL COUNTY, WYOMING

BY IntraSearch 1979

This report has not been edited for conformity with U.S. Geological Survey editorial standards or stratigraphic nomenclature.

PLATE 2 BOUNDARY AND COAL DATA MAP