

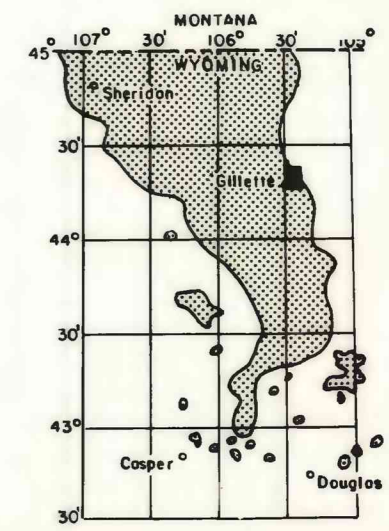
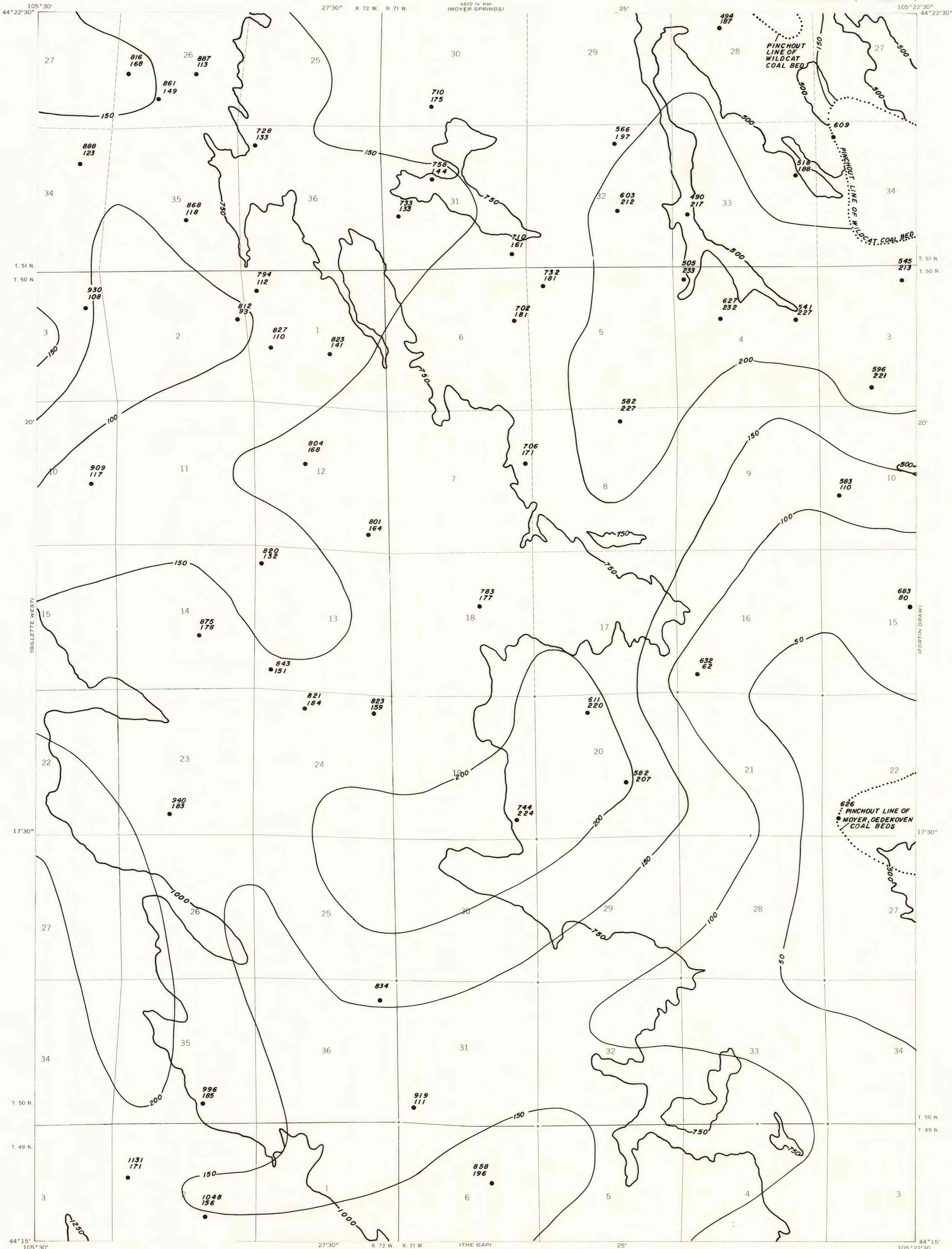
EXPLANATION

— 750 —
OVERBURDEN ISOPACH—Showing thickness of overburden, in feet, from the surface to the top of the coal bed. Isopach interval 250 feet.

— 150 —
INTERBURDEN ISOPACH—Showing thickness of interburden, in feet, between the splits of the coal bed. Isopach interval 50 feet.

● 632
● 62
DRILL HOLE—Showing thickness of overburden, in feet, from the surface to top of coal bed. Lower number indicates interburden thickness, in feet, between upper and lower splits of coal bed.

To convert feet to meters, multiply feet by 0.3048.

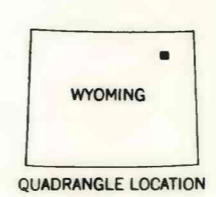
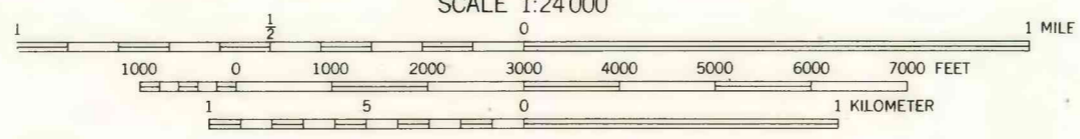
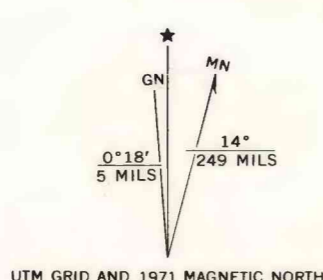


MAP SHOWING LOCATION OF THE GILLETTE EAST QUADRANGLE AND THE POWDER RIVER BASIN KNOWN RECOVERABLE COAL RESOURCE AREA (STIPPLED), WYOMING

Base from U.S. Geological Survey, 1971

SCALE 1:24000

Compiled in 1978



COAL RESOURCE OCCURRENCE MAP OF THE GILLETTE EAST QUADRANGLE, CAMPBELL COUNTY, WYOMING

BY
IntraSearch
1979

PLATE II
ISOPACH MAP OF OVERBURDEN AND INTERBURDEN OF WILDCAT - MOYER - OEDEKOVEN COAL ZONE

This report has not been edited for conformity with U.S. Geological Survey editorial standards or stratigraphic nomenclature.