

EXPLANATION

— 500 —

OVERBURDEN ISOPACH—Showing thickness of overburden, in feet, from the surface to the top of the coal bed. Isopach interval 100 feet below the 500 foot isopach; 250 feet above the 500 foot isopach.

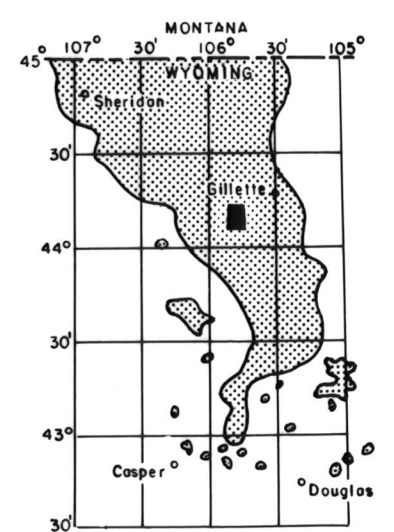
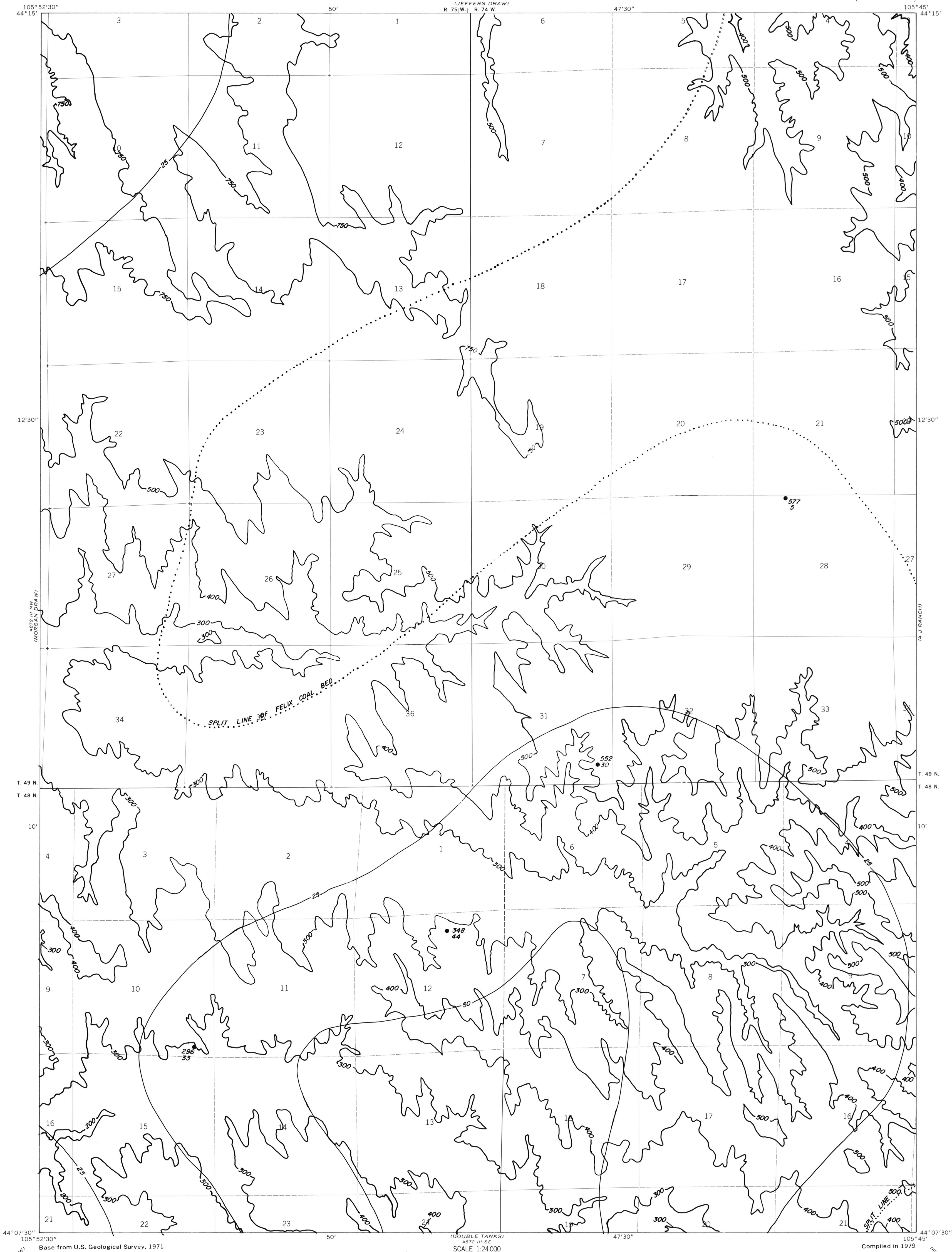
— 50 —

INTERBURDEN ISOPACH—Showing thickness of interburden, in feet, between the splits of the coal bed. Isopach interval 25 feet.

● 552  
● 30

DRILL HOLE—Showing thickness of overburden, in feet, from the surface to top of coal bed. Lower number indicates interburden thickness, in feet, between upper and lower splits of coal bed.

To convert feet to meters  
multiply feet by 0.3048.



MAP SHOWING LOCATION OF THE SCOTT DAM QUADRANGLE AND THE POWDER RIVER BASIN KNOWN RECOVERABLE COAL RESOURCE AREA (STIPPLED), WYOMING

This report has not been edited for conformity with U.S. Geological Survey editorial standards or stratigraphic nomenclature.

COAL RESOURCE OCCURRENCE MAP OF THE SCOTT DAM  
QUADRANGLE, CAMPBELL COUNTY, WYOMING

BY  
IntraSearch  
1979

PLATE II  
ISOPACH MAP OF OVERBURDEN  
AND INTERBURDEN OF  
FELIX COAL BED