

EXPLANATION

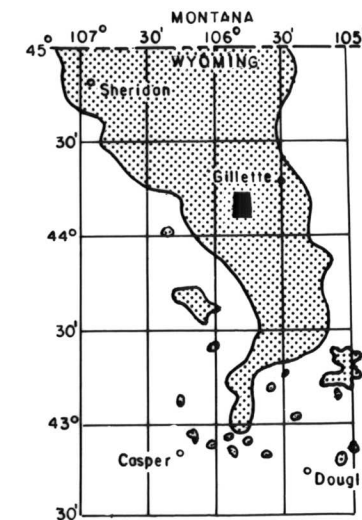
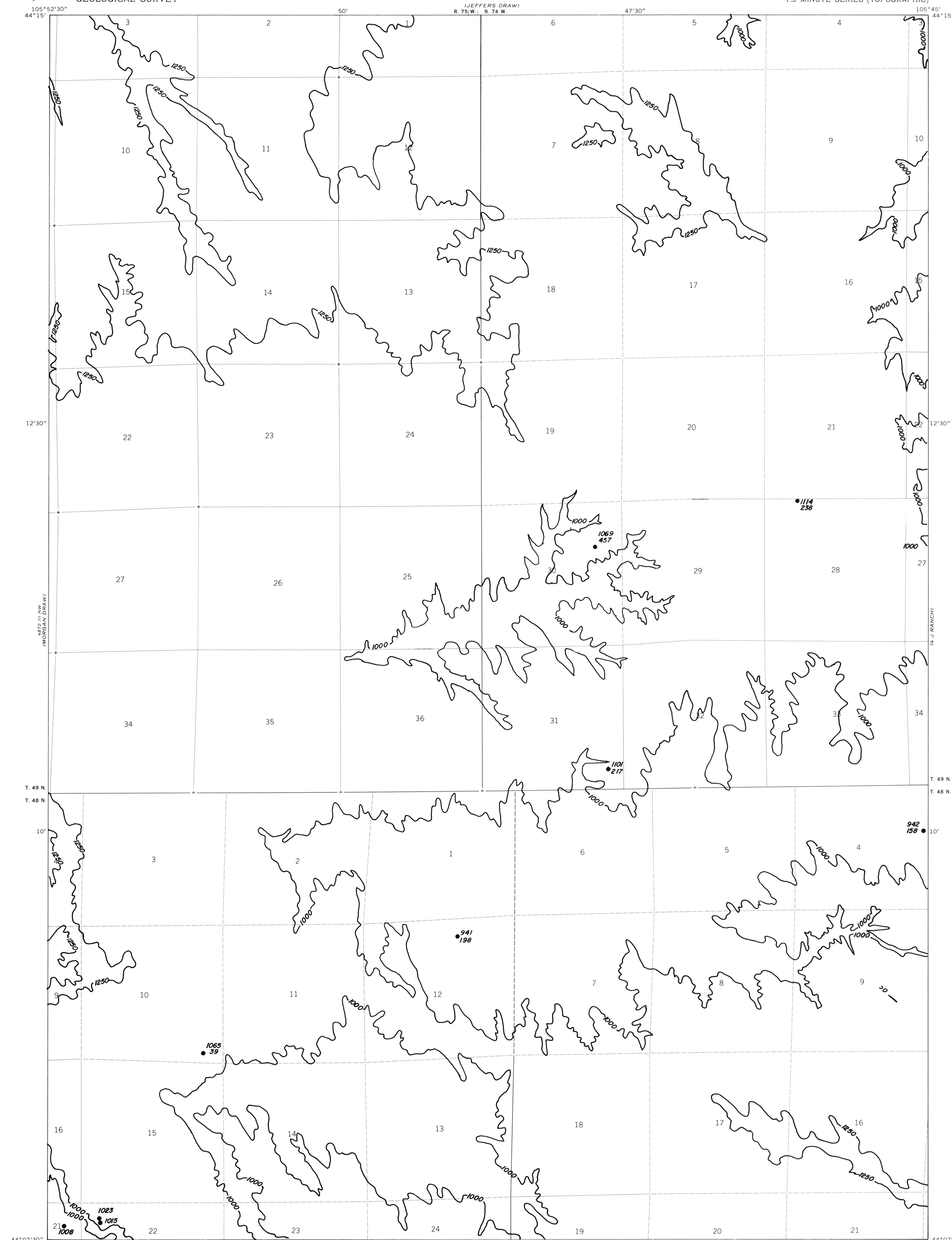
1000

OVERBURDEN ISOPACH—Showing thickness of overburden, in feet, from the surface to the top of the coal bed. Isopach interval 250 feet.

1114
238

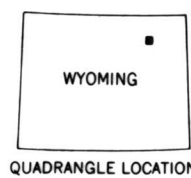
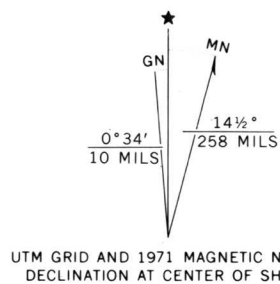
DRILL HOLE—Showing thickness of overburden, in feet, from the surface to top of coal bed. Lower number indicates interburden thickness, in feet, between upper and lower splits of coal bed.

To convert feet to meters
multiply feet by 0.3048.



MAP SHOWING LOCATION OF THE SCOTT DAM QUADRANGLE AND THE POWDER RIVER BASIN KNOWN RECOVERABLE COAL RESOURCE AREA (STIPPLED), WYOMING

This report has not been edited for conformity with U.S. Geological Survey editorial standards or stratigraphic nomenclature.



COAL RESOURCE OCCURRENCE MAP OF THE SCOTT DAM
QUADRANGLE, CAMPBELL COUNTY, WYOMING

BY
IntraSearch
1979

PLATE 21
ISOPACH MAP OF
OVERBURDEN OF
ANDERSON-CANYON-COOK
COAL ZONE