


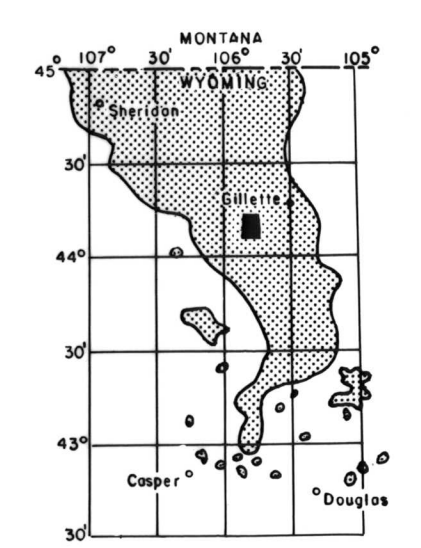
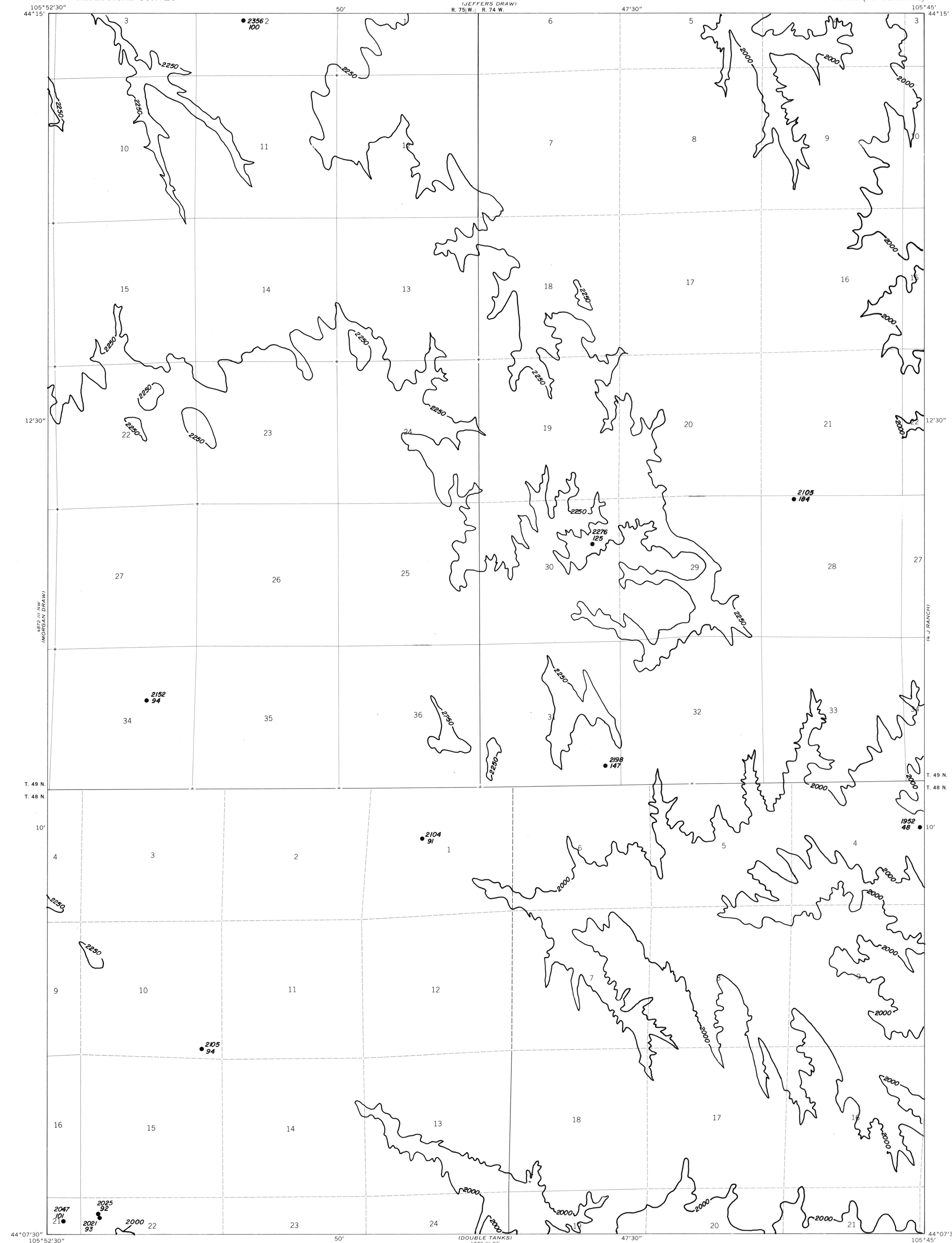
EXPLANATION

 2000
OVERBURDEN ISOPACH—Showing thickness of overburden, in feet, from the surface to the top of the coal bed. Isopach interval 250 feet.

 2105
184

DRILL HOLE—Showing thickness of overburden, in feet, from the surface to top of coal bed. Lower number indicates interburden thickness, in feet, between upper and lower splits of coal bed.

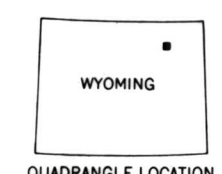
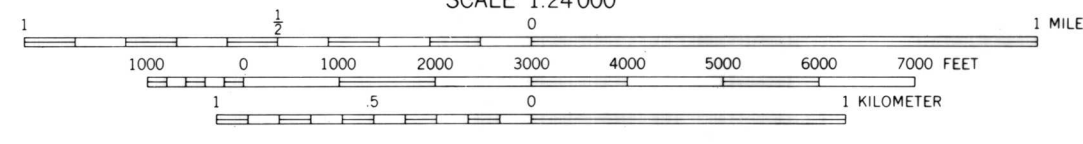
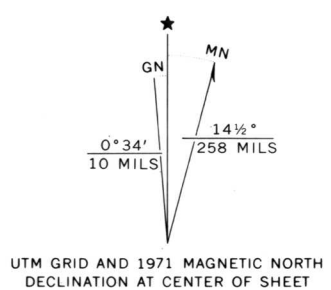
To convert feet to meters multiply feet by 0.3048.



MAP SHOWING LOCATION OF THE SCOTT DAM QUADRANGLE AND THE POWDER RIVER BASIN KNOWN RECOVERABLE COAL RESOURCE AREA (STIPPLED), WYOMING

This report has not been edited for conformity with U.S. Geological Survey editorial standards or stratigraphic nomenclature.

Base from U.S. Geological Survey, 1971
Scale 1:24,000
Compiled in 1979



COAL RESOURCE OCCURRENCE MAP OF THE SCOTT DAM QUADRANGLE, CAMPBELL COUNTY, WYOMING
BY
IntraSearch
1979

PLATE 31
ISOPACH MAP OF
OVERBURDEN OF
WILDCAT-MOYER-OEDEKOVEN
COAL ZONE