

EXPLANATION

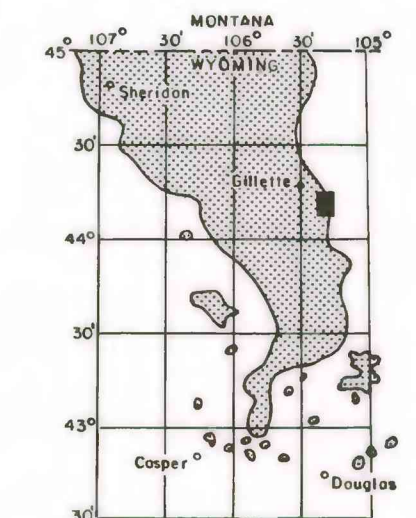
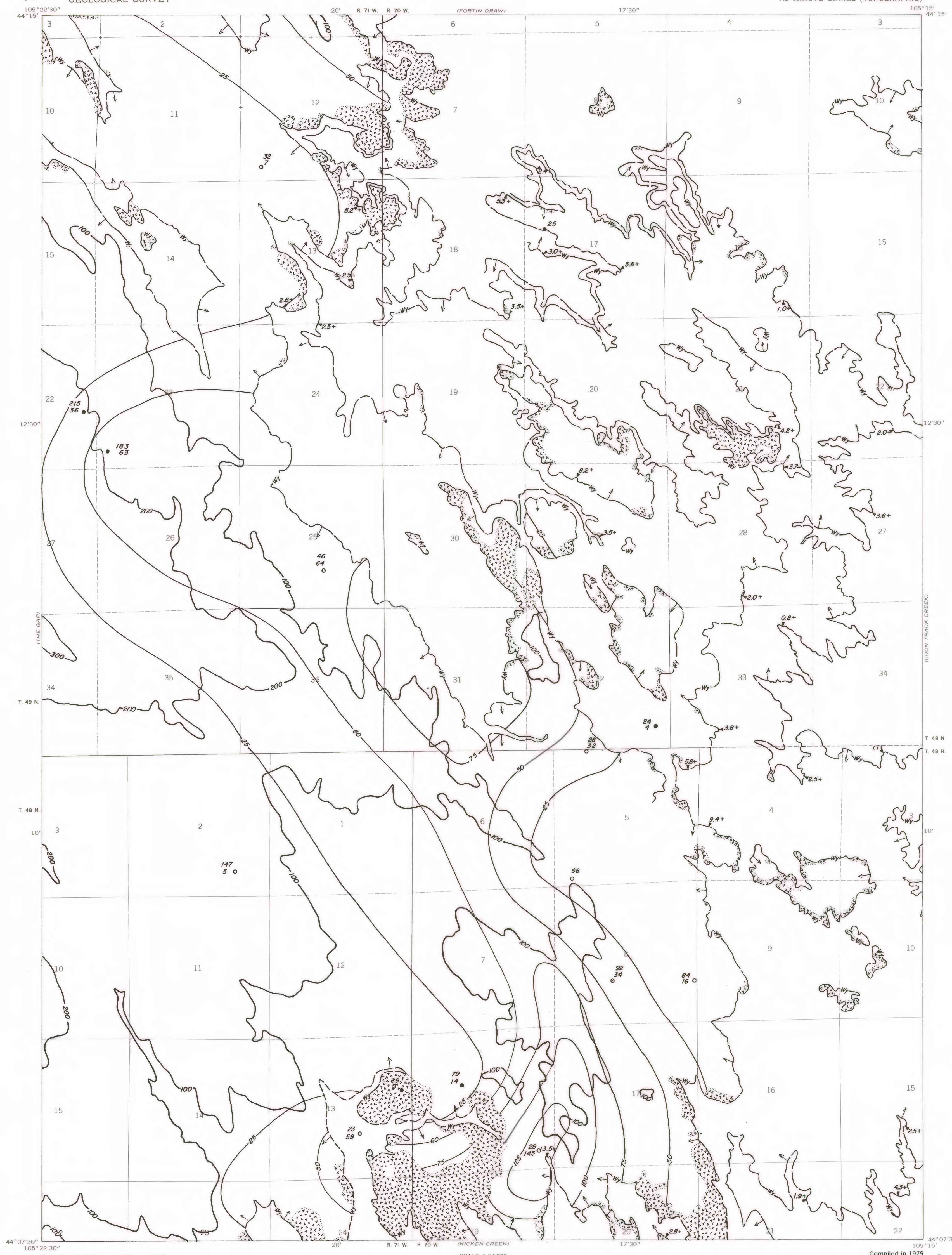
**300**  
OVERBURDEN ISOPACH—Showing thickness of overburden, in feet, from the surface to the top of the coal bed. Isopach interval 100 feet.

**25**  
INTERBURDEN ISOPACH—Showing thickness of interburden, in feet, between the splits of the coal bed. Isopach interval 25 feet.

**66**  
**104**  
DRILL HOLE—Showing thickness of overburden, in feet, from the surface to top of coal bed. Lower number indicates interburden thickness, in feet, between upper and lower splits of coal bed.

**WY**  
TRACE OF COAL BED OUTCROP—Arrow points toward the coal-bearing area. "V" symbol indicates burned rock with dotted line showing limit of burning.

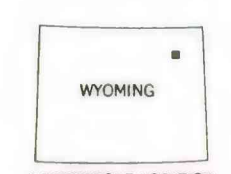
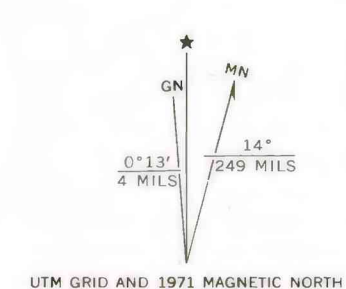
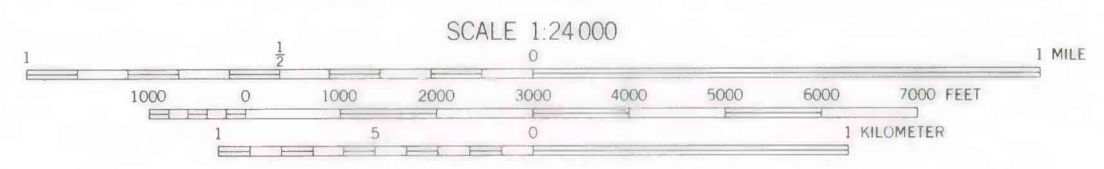
To convert feet to meters multiply feet by 0.3048.



MAP SHOWING LOCATION OF THE COYOTE DRAW QUADRANGLE AND THE POWDER RIVER BASIN KNOWN RECOVERABLE COAL RESOURCE AREA (STIPPLED), WYOMING

Base from U.S. Geological Survey, 1971

Compiled in 1979



This report has not been edited for conformity with U.S. Geological Survey editorial standards or stratigraphic nomenclature.

**COAL RESOURCE OCCURRENCE MAP OF THE COYOTE DRAW QUADRANGLE, CAMPBELL COUNTY, WYOMING**

BY  
**IntraSearch**  
1979