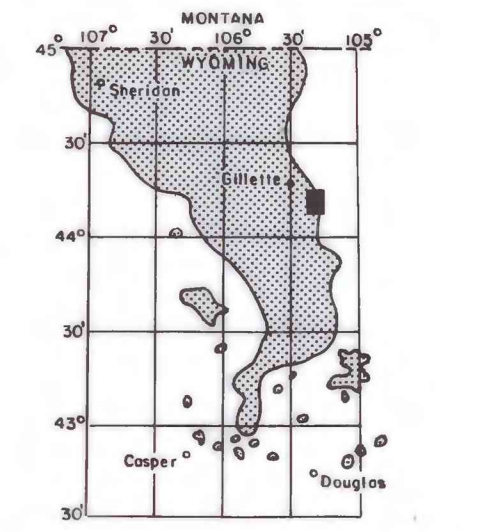
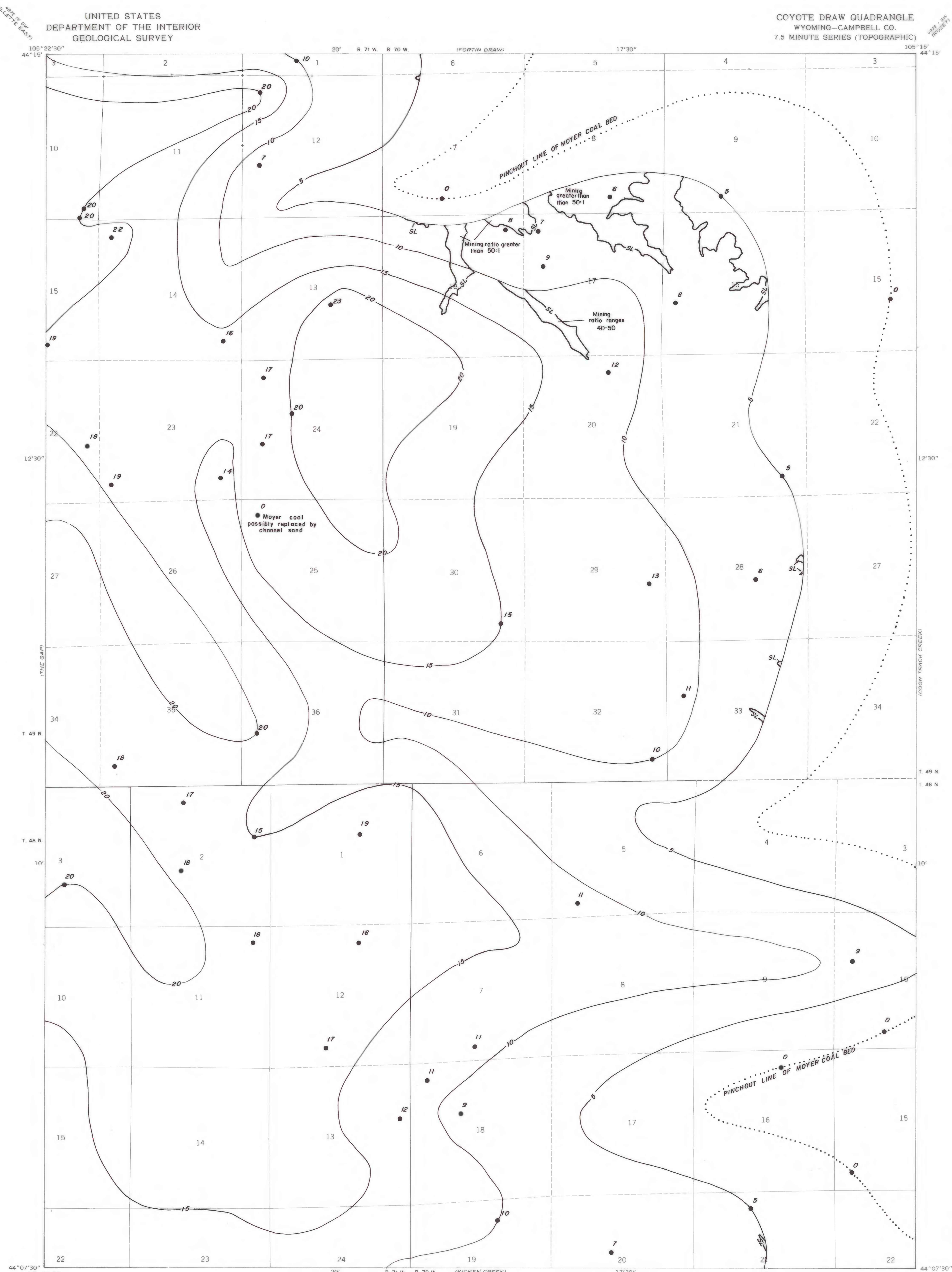


EXPLANATION

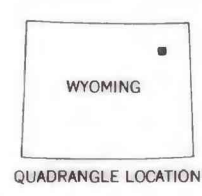
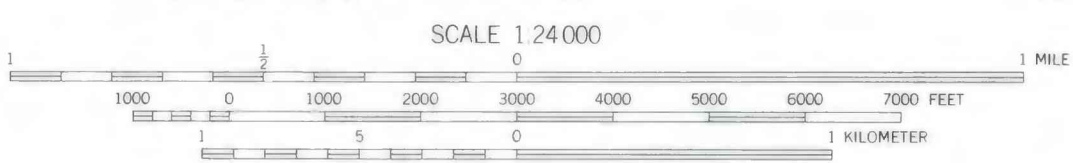
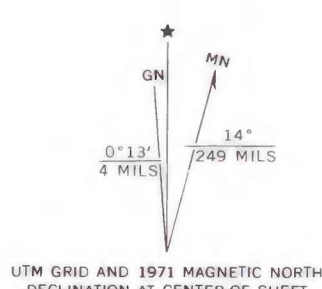
- ISOPACHS OF COAL BED-Showing thickness in feet, interval 5 feet.
 - DRILL HOLE-Showing coal thickness in feet.
 - STRIPPING LIMIT LINE-500 foot overburden isopach boundary for surface mining of coal. Arrow indicates area suitable for surface mining.
 - MINING RATIO-Number indicates cubic yards of overburden per ton of recoverable coal by surface mining methods. Ratio shown only in area suitable for surface mining within the stripping limit.
- To convert feet to meters multiply feet by 0.3048.



MAP SHOWING LOCATION OF THE COYOTE DRAW QUADRANGLE AND THE POWDER RIVER BASIN KNOWN RECOVERABLE COAL RESOURCE AREA (STIPPLED), WYOMING

Base from U.S. Geological Survey, 1971

Compiled in 1979



This report has not been edited for conformity with U.S. Geological Survey editorial standards or stratigraphic nomenclature.

COAL RESOURCE OCCURRENCE MAP OF THE COYOTE DRAW QUADRANGLE, CAMPBELL COUNTY, WYOMING

BY
IntraSearch
1979