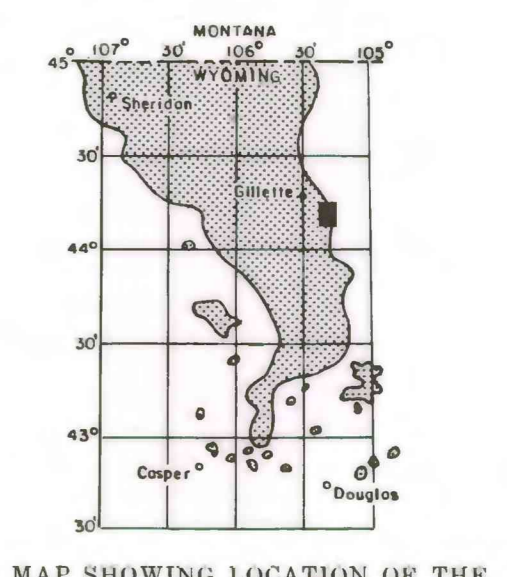
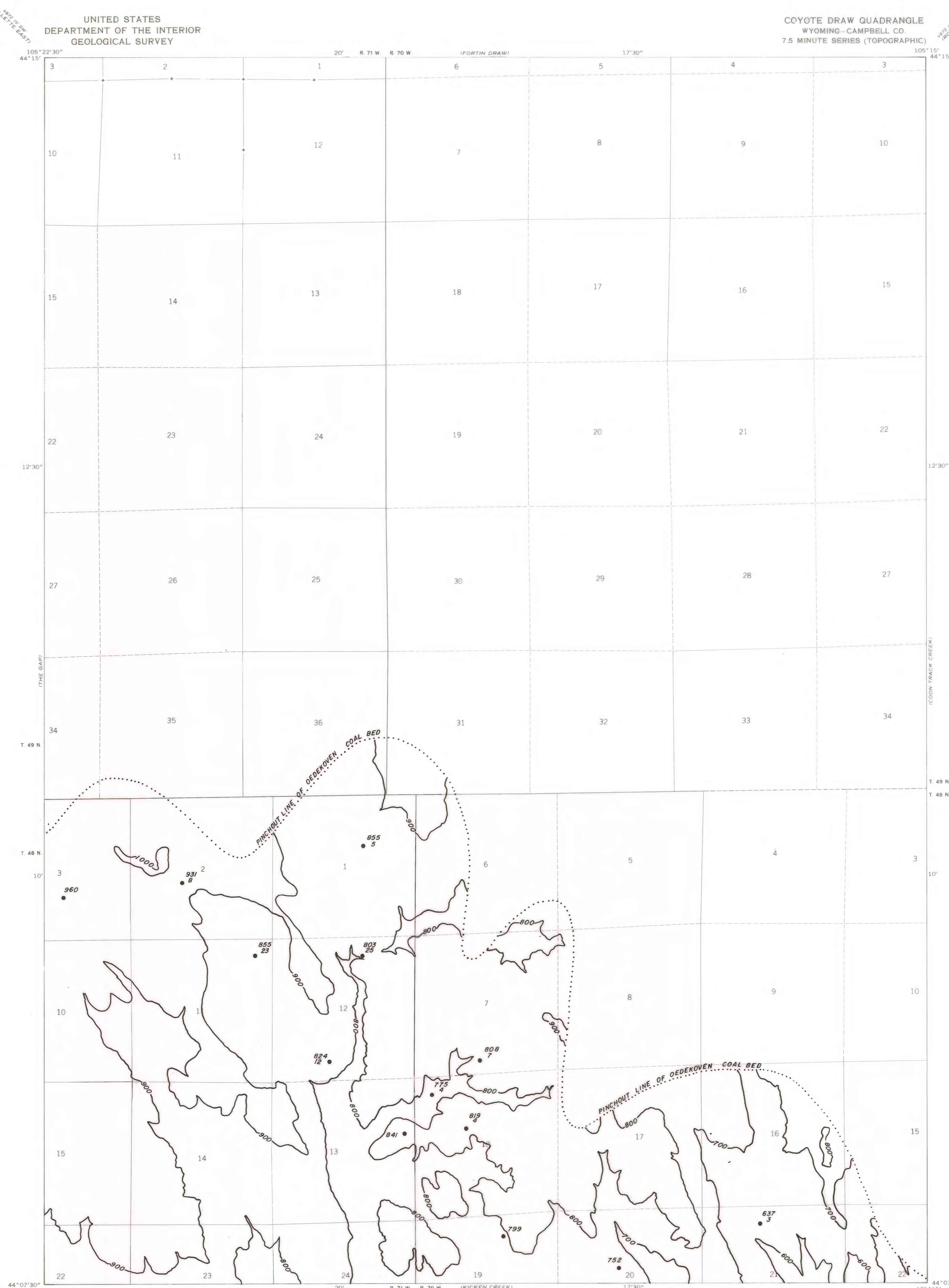


EXPLANATION

200
OVERBURDEN ISOPACH—Showing thickness of overburden, in feet, from the surface to the top of the coal bed. Isopach interval 100 feet.

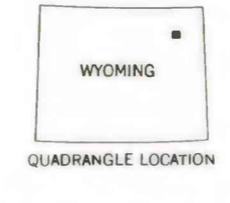
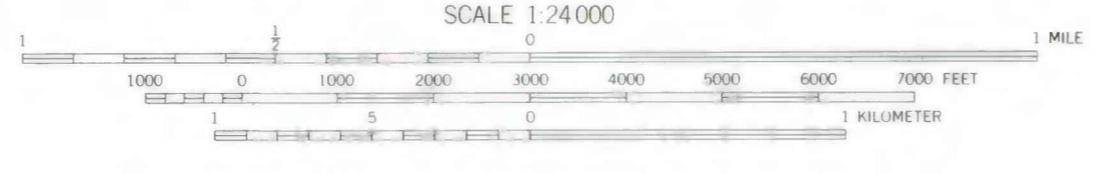
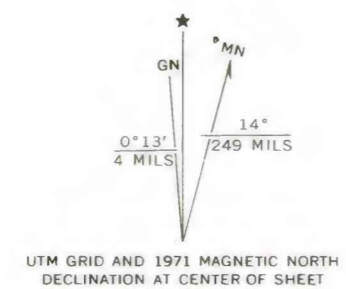
855
DRILL HOLE—Showing thickness of overburden, in feet, from the surface to top of coal bed. Lower number indicates interburden thickness, in feet, between upper and lower splits of coal bed.

To convert feet to meters multiply feet by 0.3048.



MAP SHOWING LOCATION OF THE COYOTE DRAW QUADRANGLE AND THE POWDER RIVER BASIN KNOWN RECOVERABLE COAL RESOURCE AREA (STIPPLED), WYOMING

Base from U.S. Geological Survey, 1971



This report has not been edited for conformity with U.S. Geological Survey editorial standards or stratigraphic nomenclature.

COAL RESOURCE OCCURRENCE MAP OF THE COYOTE DRAW QUADRANGLE, CAMPBELL COUNTY, WYOMING

BY
IntraSearch
1979

PLATE 21
ISOPACH MAP OF
OVERBURDEN OF
OEDEKOVEN COAL BED