

EXPLANATION

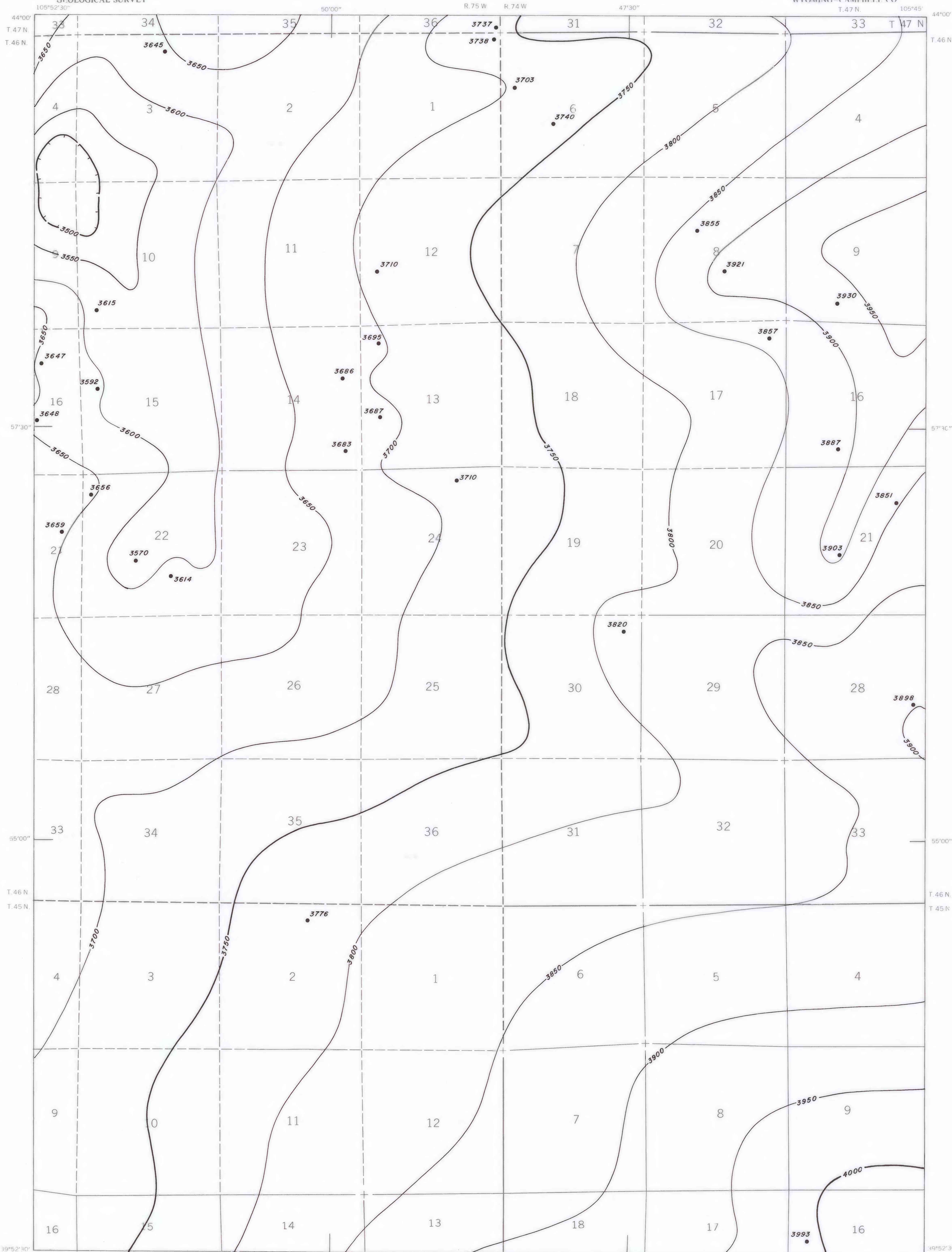
— 3700 —
— 3750 —

STRUCTURE CONTOURS—Drawn on top of coal bed. Contour interval 50 feet. Datum is mean sea level.

• 3855

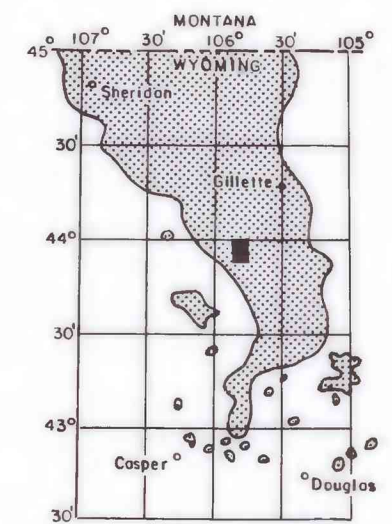
DRILL HOLE—Showing elevation at top of coal bed, in feet.

To convert feet to meters multiply feet by 0.3048.



Base from U.S. Geological Survey, 1959

Compiled in 1979



MAP SHOWING LOCATION OF THE NE¼ SAVAGETON 15' QUADRANGLE AND THE POWDER RIVER BASIN KNOWN RECOVERABLE COAL RESOURCE AREA (STIPPLED), WYOMING

This report has not been edited for conformity with U. S. Geological Survey editorial standards or stratigraphic nomenclature.

COAL RESOURCE OCCURRENCE MAP OF THE NE¼ SAVAGETON 15' QUADRANGLE, CAMPBELL COUNTY, WYOMING

BY
IntraSearch
1979

PLATE 15
STRUCTURE CONTOUR MAP OF
UPPER WYODAK COAL BED