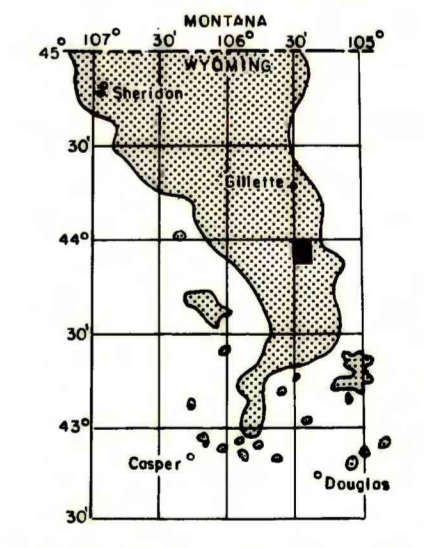
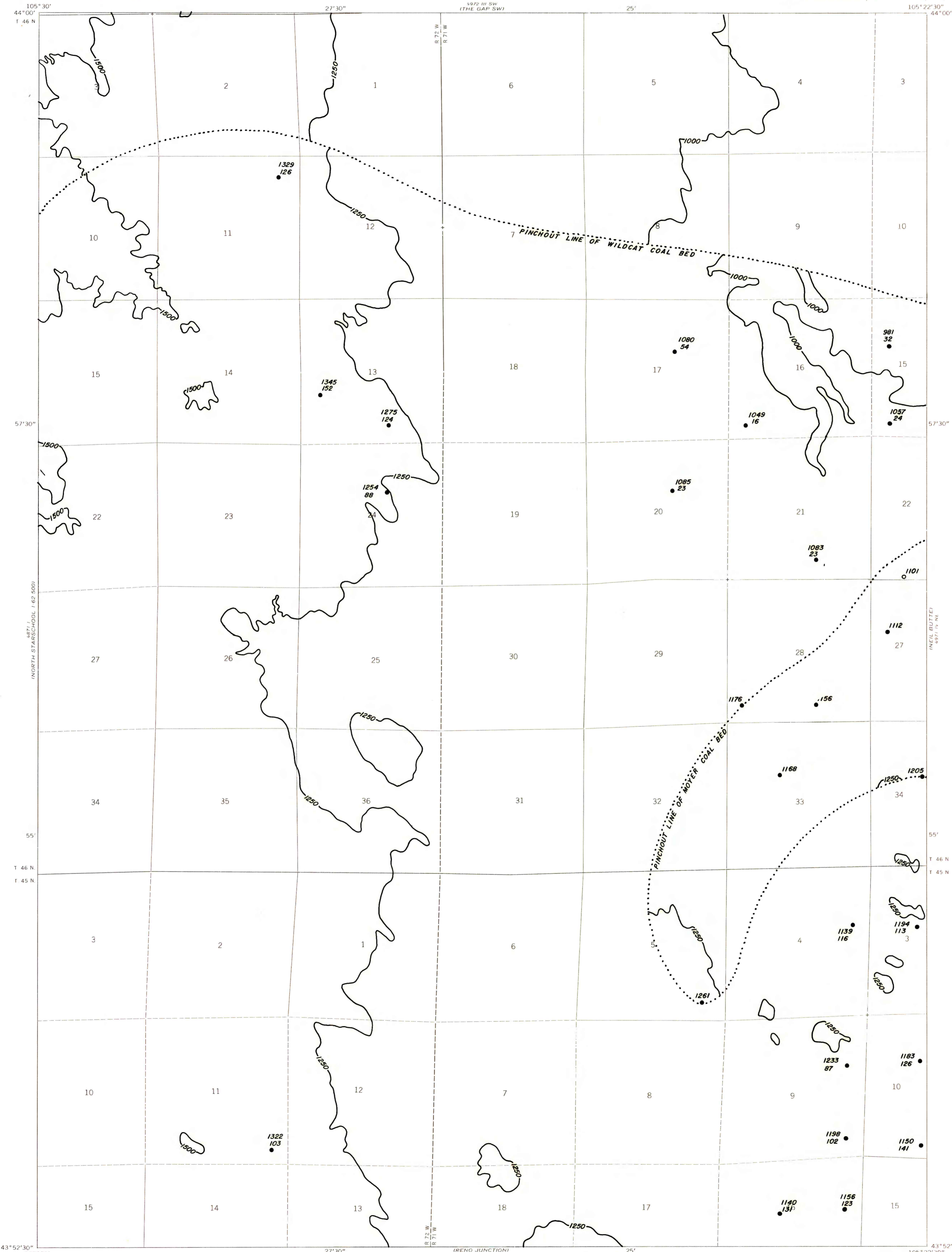


EXPLANATION

**1250**  
OVERBURDEN ISOPACH-Showing thickness of overburden, in feet, from the surface to the top of the coal bed. Isopach interval 250 feet.

**1156** **1329**  
**106**  
DRILL HOLE-Showing thickness of overburden, in feet, from the surface to top of coal bed. Lower number indicates interburden thickness, in feet, between upper and lower splits of coal bed.

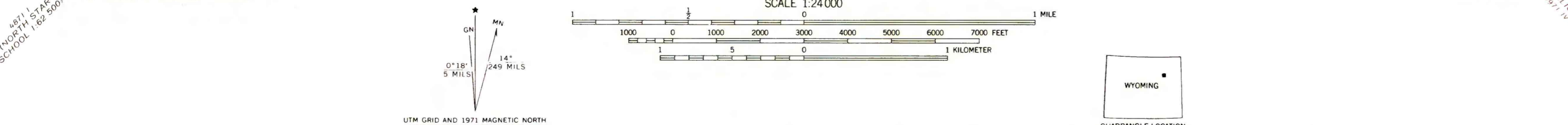
To convert feet to meters, multiply feet by 0.3048.



MAP SHOWING LOCATION OF THE EAGLE ROCK QUADRANGLE AND THE POWDER RIVER BASIN KNOWN RECOVERABLE COAL RESOURCE AREA (STIPPLED), WYOMING

Base from U.S. Geological Survey, 1971

Compiled in 1979



**COAL RESOURCE OCCURRENCE MAP OF THE EAGLE ROCK QUADRANGLE, CAMPBELL COUNTY, WYOMING**

BY  
**IntraSearch**  
1979

PLATE 21  
ISOPACH MAP OF  
OVERBURDEN OF  
WILDCAT-MOYER-OEDEKOVEN COAL ZONE

This report has not been edited for conformity with U.S. Geological Survey editorial standards or stratigraphic nomenclature.