

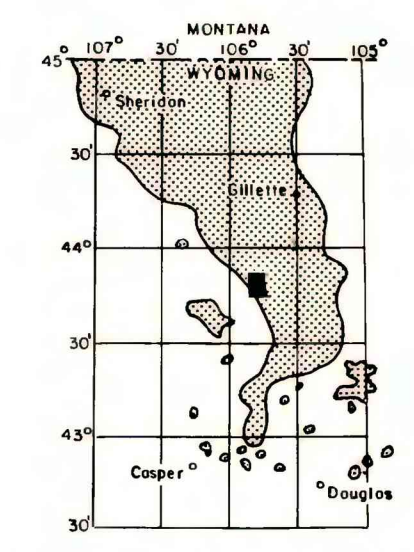
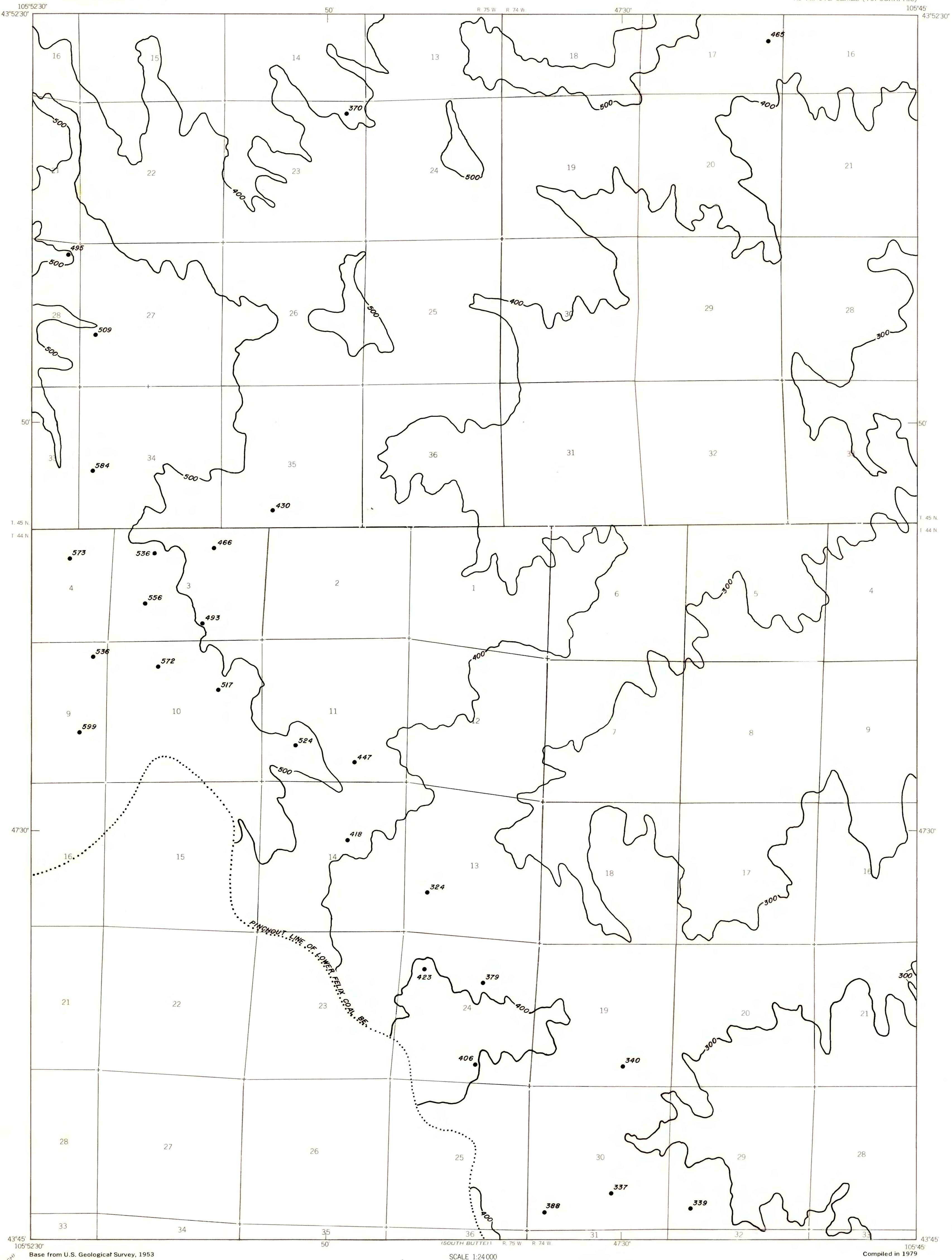


EXPLANATION

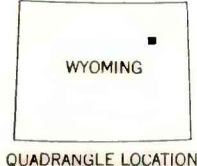
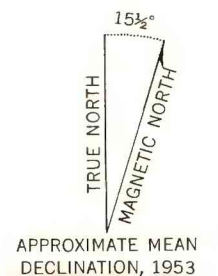
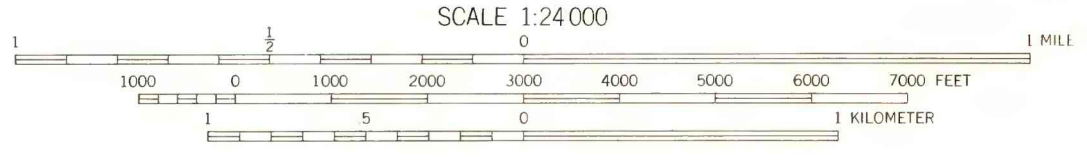
 400
OVERBURDEN ISOPACH—Showing thickness of overburden, in feet, from the surface to the top of the coal bed. Isopach interval 100 feet.

 465
DRILL HOLE—Showing thickness of overburden, in feet, from the surface to top of coal bed.

To convert feet to meters
multiply feet by 0.3048.



MAP SHOWING LOCATION OF THE SAVAGETON 7 1/2' QUADRANGLE AND THE POWDER RIVER BASIN KNOWN RECOVERABLE COAL RESOURCE AREA (STIPPLED), WYOMING



COAL RESOURCE OCCURRENCE MAP OF THE SAVAGETON 7 1/2' QUADRANGLE, CAMPBELL COUNTY, WYOMING

BY
IntraSearch
1979

This report has not been edited for conformity with U.S. Geological Survey editorial standards or cartographic nomenclature.

PLATE 6
ISOPACH MAP OF
OVERBURDEN OF
LOWER FELIX COAL BED

Base from U.S. Geological Survey, 1953

Compiled in 1979

ROLLING PIN RANCH