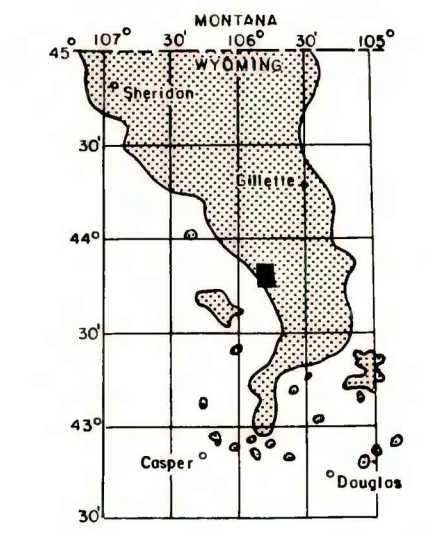
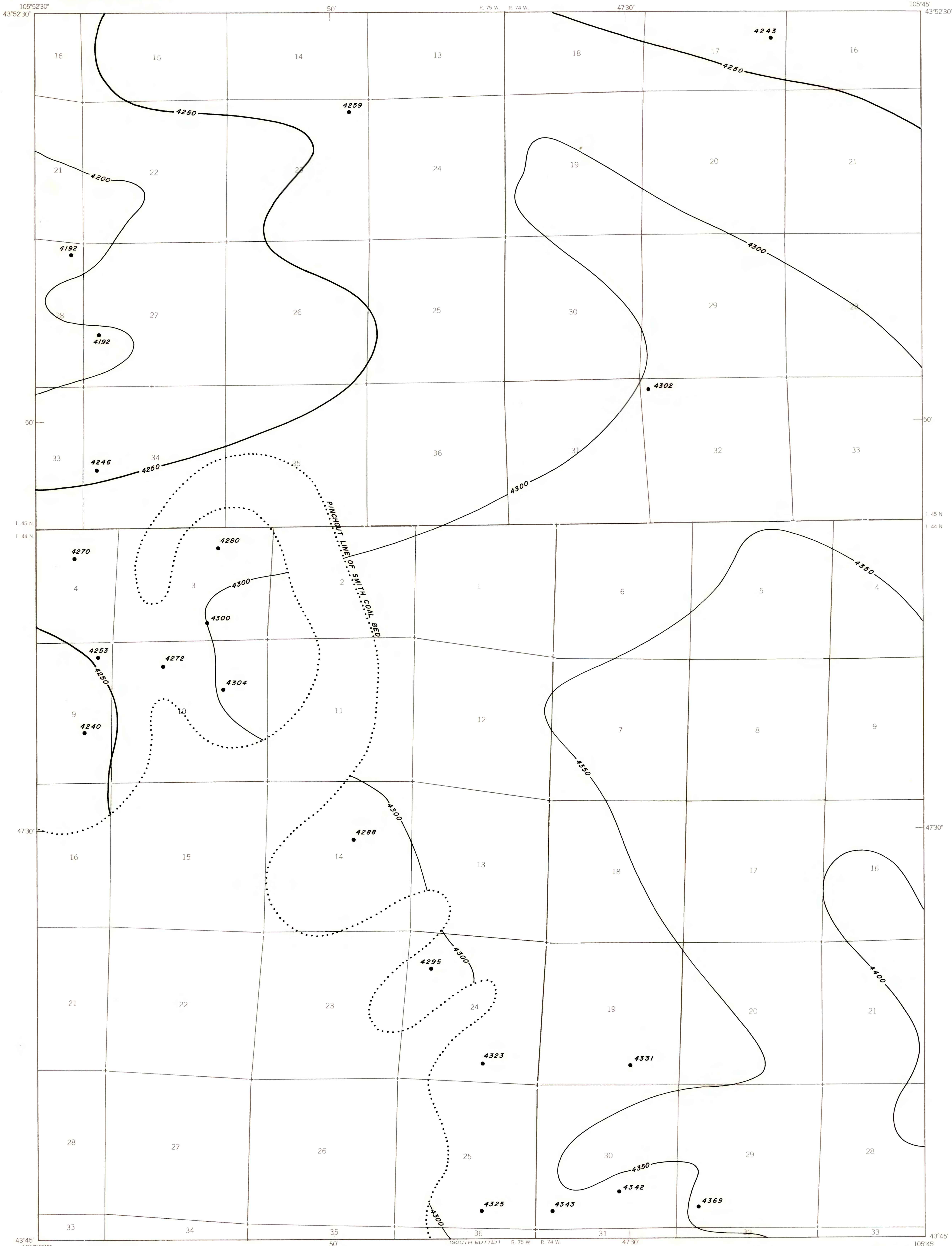


EXPLANATION

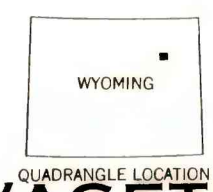
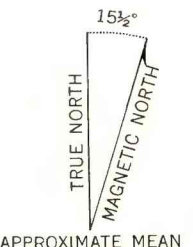
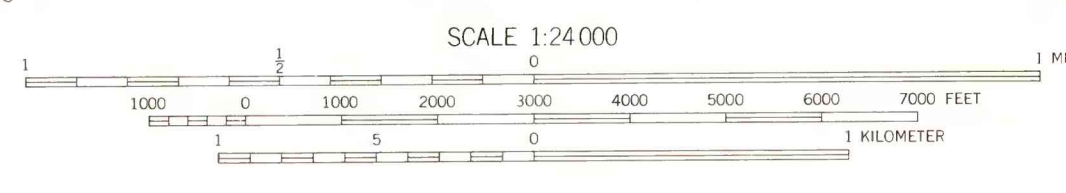
— 4250 —  
— 4300 —  
STRUCTURE CONTOURS—Drawn on top of coal bed. Contour interval 50 feet. Datum is mean sea level.

• 4243  
DRILL HOLE—Showing elevation at top of coal bed, in feet.

To convert feet to meters multiply feet by 0.3048.



MAP SHOWING LOCATION OF THE SAVAGETON 7 1/2' QUADRANGLE AND THE POWDER RIVER BASIN KNOWN RECOVERABLE COAL RESOURCE AREA (STIPPLED), WYOMING



**COAL RESOURCE OCCURRENCE MAP OF THE SAVAGETON 7 1/2' QUADRANGLE, CAMPBELL COUNTY, WYOMING**

BY  
**IntraSearch**  
1979

PLATE 10  
STRUCTURE CONTOUR MAP OF  
SMITH COAL BED

This report has not been edited for conformity with U.S. Geological Survey editorial standards or cartographic nomenclature.

ROLLING PIN RANCH

Base from U.S. Geological Survey, 1953

Compiled in 1979