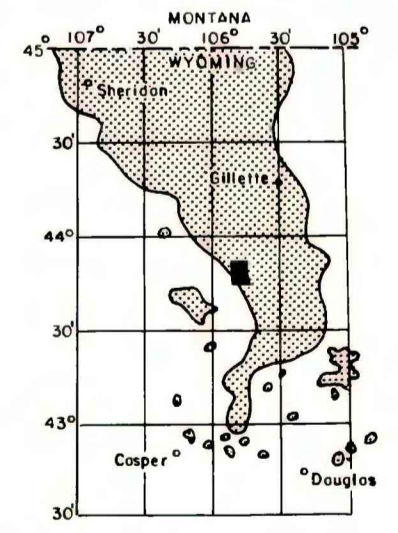
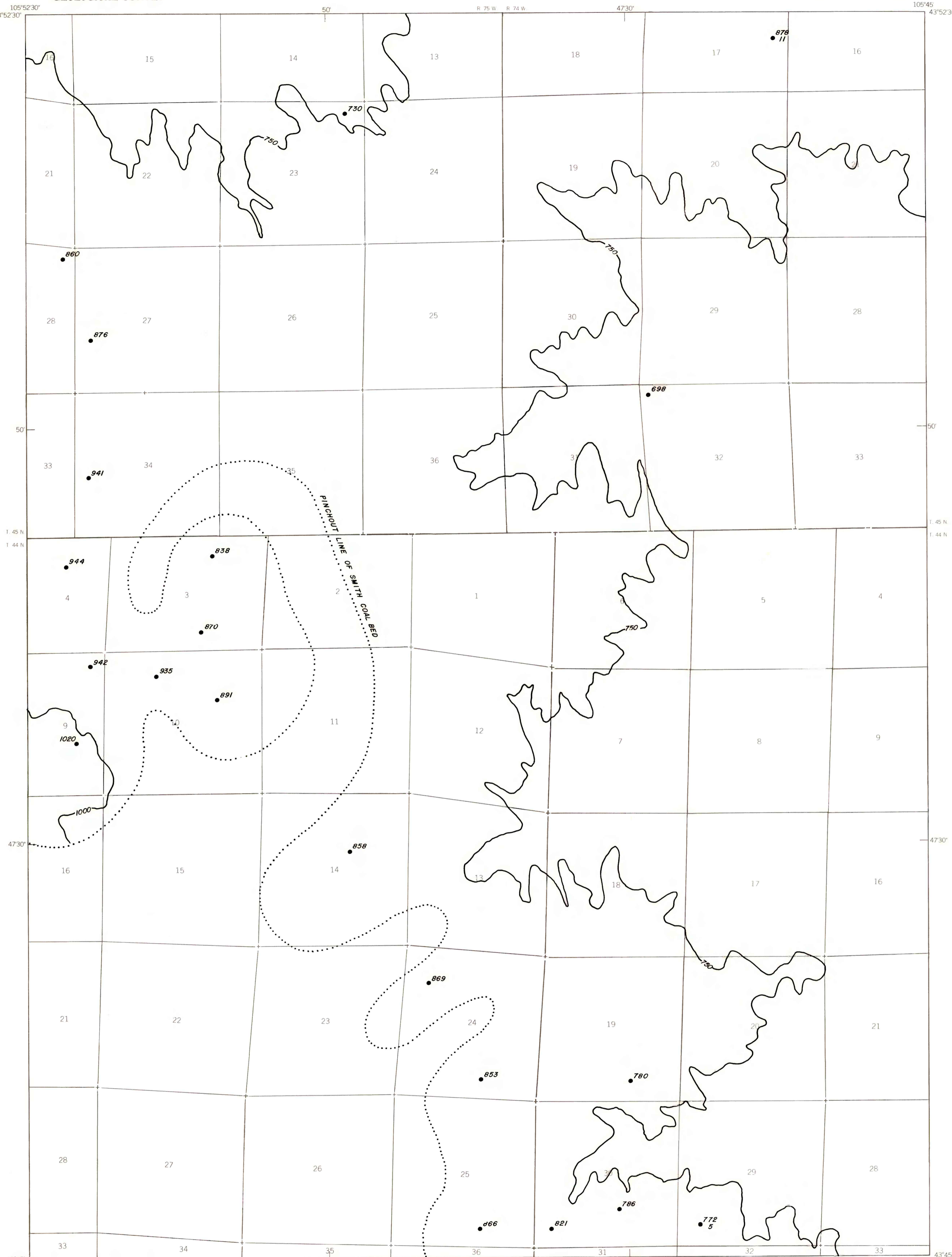


EXPLANATION

— 1000 —  
OVERBURDEN ISOPACH—Showing thick-  
ness of overburden, in feet,  
from the surface to the top of  
the coal bed. Isopach interval  
250 feet.

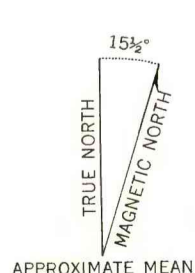
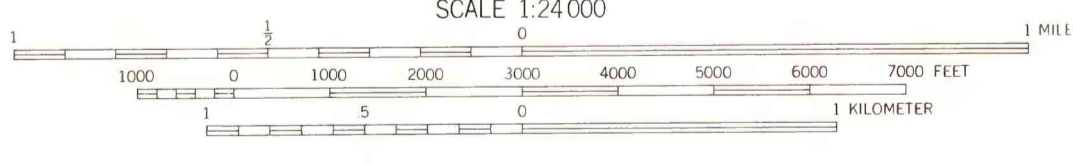
● 772  
5  
DRILL HOLE—Showing thickness of  
overburden, in feet, from the  
surface to top of coal bed.  
Lower number indicates interburden  
thickness, in feet, between upper  
and lower splits of coal bed.

To convert feet to meters  
multiply feet by 0.3048.

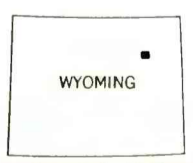


MAP SHOWING LOCATION OF THE  
SAVAGETON 7 1/2' QUADRANGLE AND  
THE POWDER RIVER BASIN KNOWN  
RECOVERABLE COAL RESOURCE  
AREA (STIPPLED), WYOMING

Base from U.S. Geological Survey, 1953  
SCALE 1:24,000  
Compiled in 1979



APPROXIMATE MEAN  
DECLINATION, 1983



COAL RESOURCE OCCURRENCE MAP OF THE SAVAGETON 7 1/2'  
QUADRANGLE, CAMPBELL COUNTY, WYOMING

BY  
IntraSearch  
1979

This report has not been edited  
for conformity with U.S. Geological  
Survey editorial standards or  
cartographic nomenclature.

PLATE 11  
ISOPACH MAP OF  
OVERBURDEN OF  
SMITH COAL BED