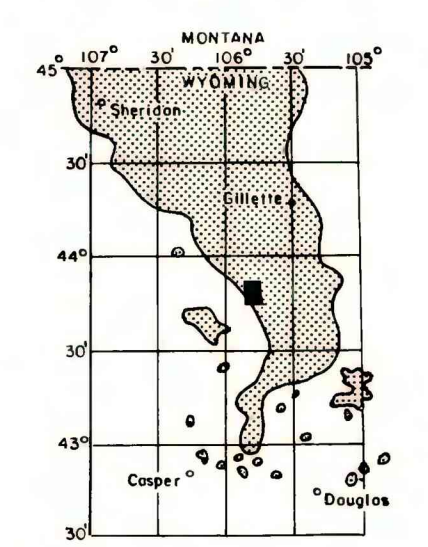
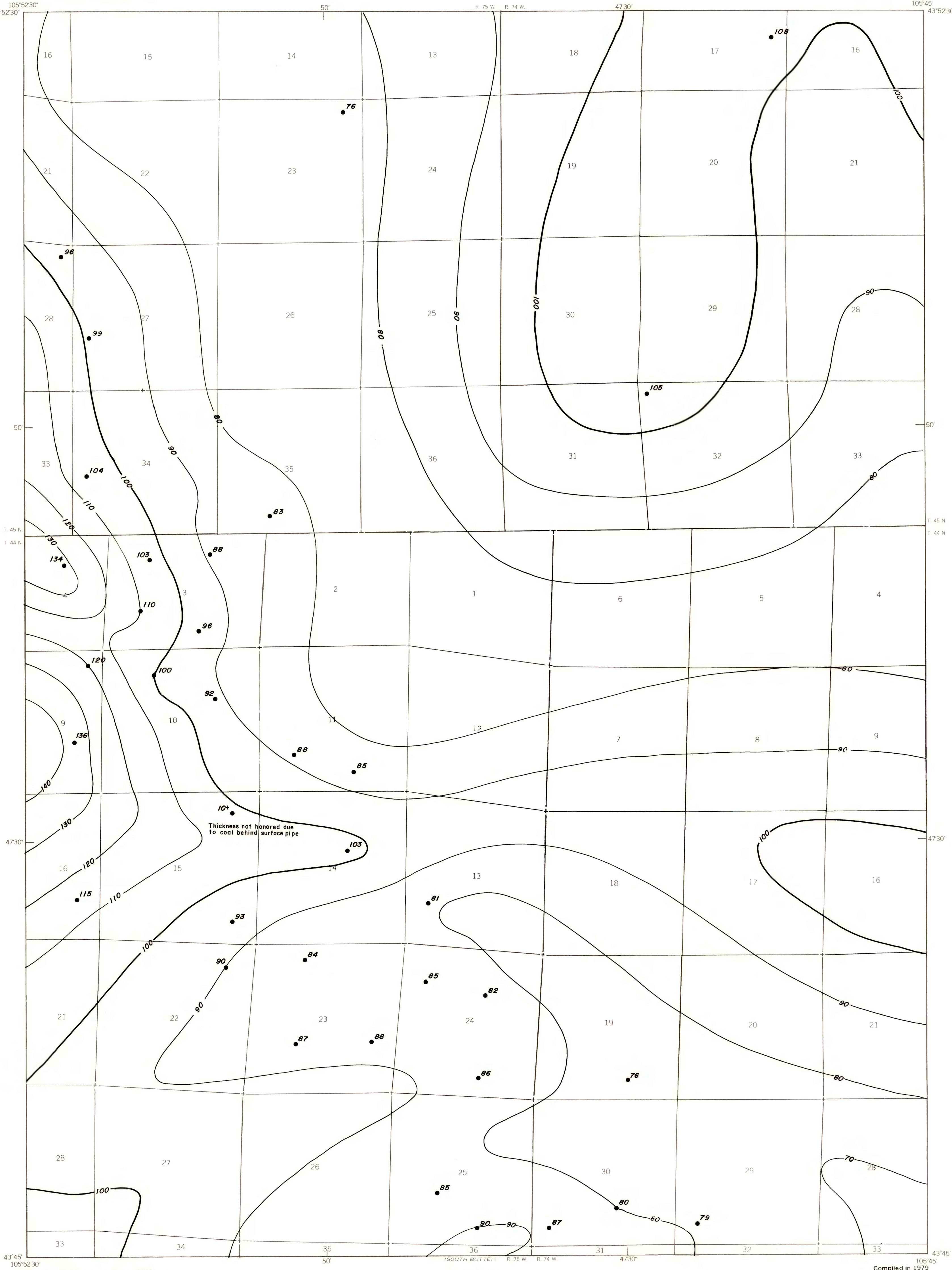


EXPLANATION

— 100 —
— 90 —
ISOPACHS OF COAL BED—Showing
thickness in feet, interval
10 feet.

• 108
DRILL HOLE—Showing coal thickness
in feet.

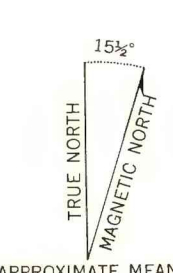
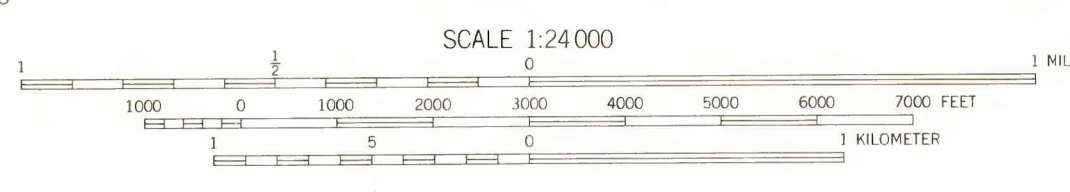
To convert feet to meters:
multiply feet by 0.3048.



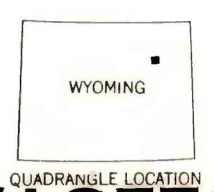
MAP SHOWING LOCATION OF THE SAVAGETON 7 1/2' QUADRANGLE AND THE POWDER RIVER BASIN KNOWN RECOVERABLE COAL RESOURCE AREA (STIPPLED), WYOMING

Base from U.S. Geological Survey, 1953

Compiled in 1979



APPROXIMATE MEAN DECLINATION, 1953



COAL RESOURCE OCCURRENCE MAP OF THE SAVAGETON 7 1/2'
QUADRANGLE, CAMPBELL COUNTY, WYOMING

BY
IntraSearch
1979

This report has not been edited for conformity with U.S. Geological Survey editorial standards or stratigraphic nomenclature.

PLATE 14
ISOPACH MAP OF
WYODAK COAL ZONE