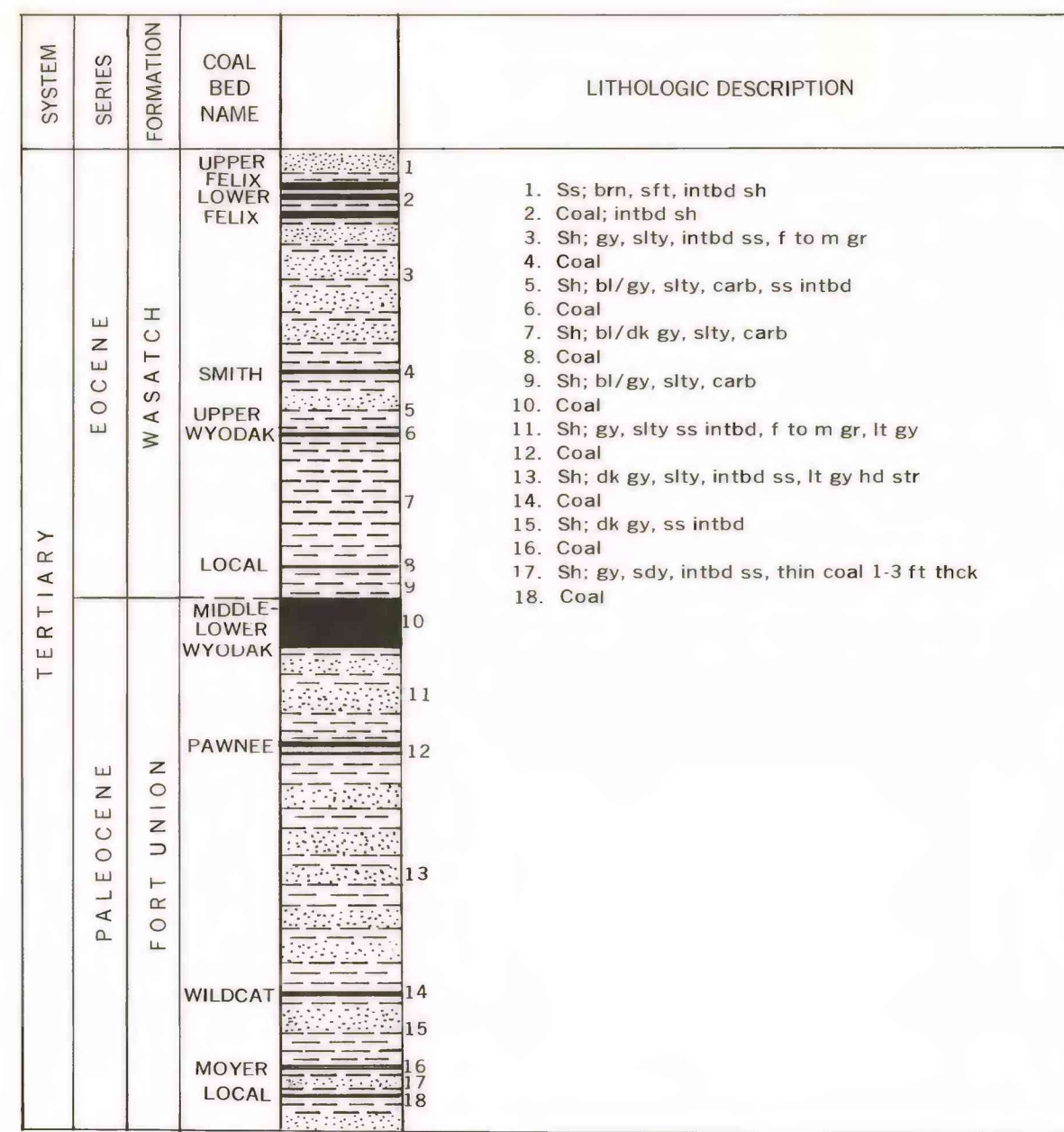
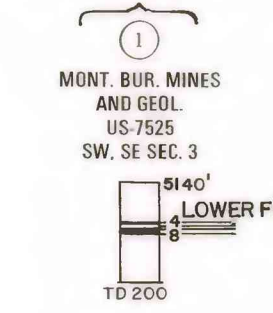


COMPOSITE COLUMNAR SECTION

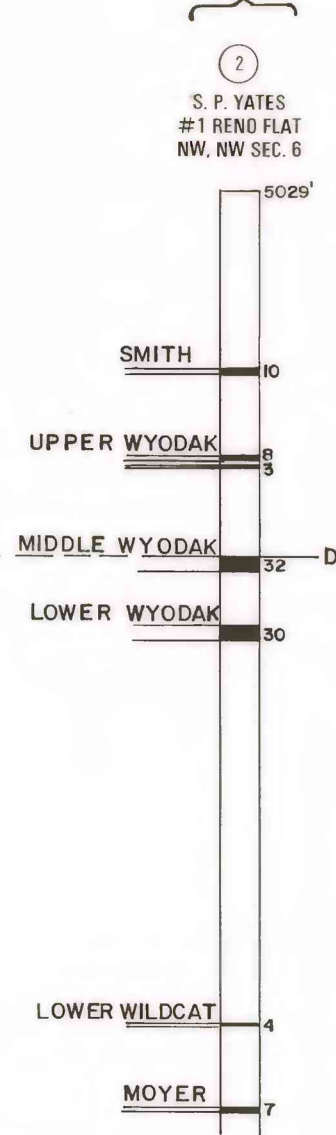


CORRELATION OF COAL BEDS IN DRILL HOLES

T. 42N. R. 73W.

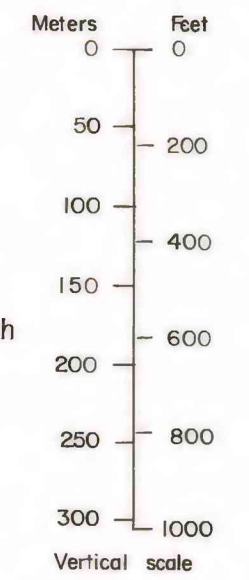


T. 42N. R. 72W.



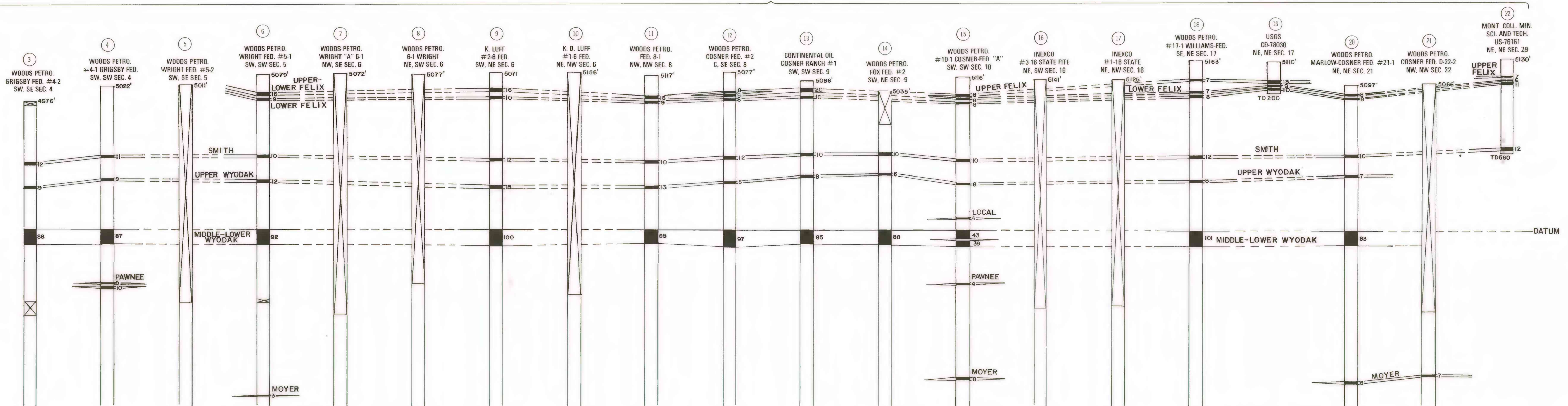
EXPLANATION

- Index number
  - Company and well name
  - Well location
  - Elevation of drill hole at surface
  - No record
  - Rock interval
  - Coal bed, showing thickness in feet
  - Column shown closed if at total depth
- COAL BED NAMES
- Upper Felix
  - Lower Felix
  - Smith
  - Upper Wyodak
  - Middle Wyodak
  - Lower Wyodak
  - Pawnee
  - Wildcat
  - Upper Wildcat
  - Lower Wildcat
  - Moyer
  - Odekoven
  - Local

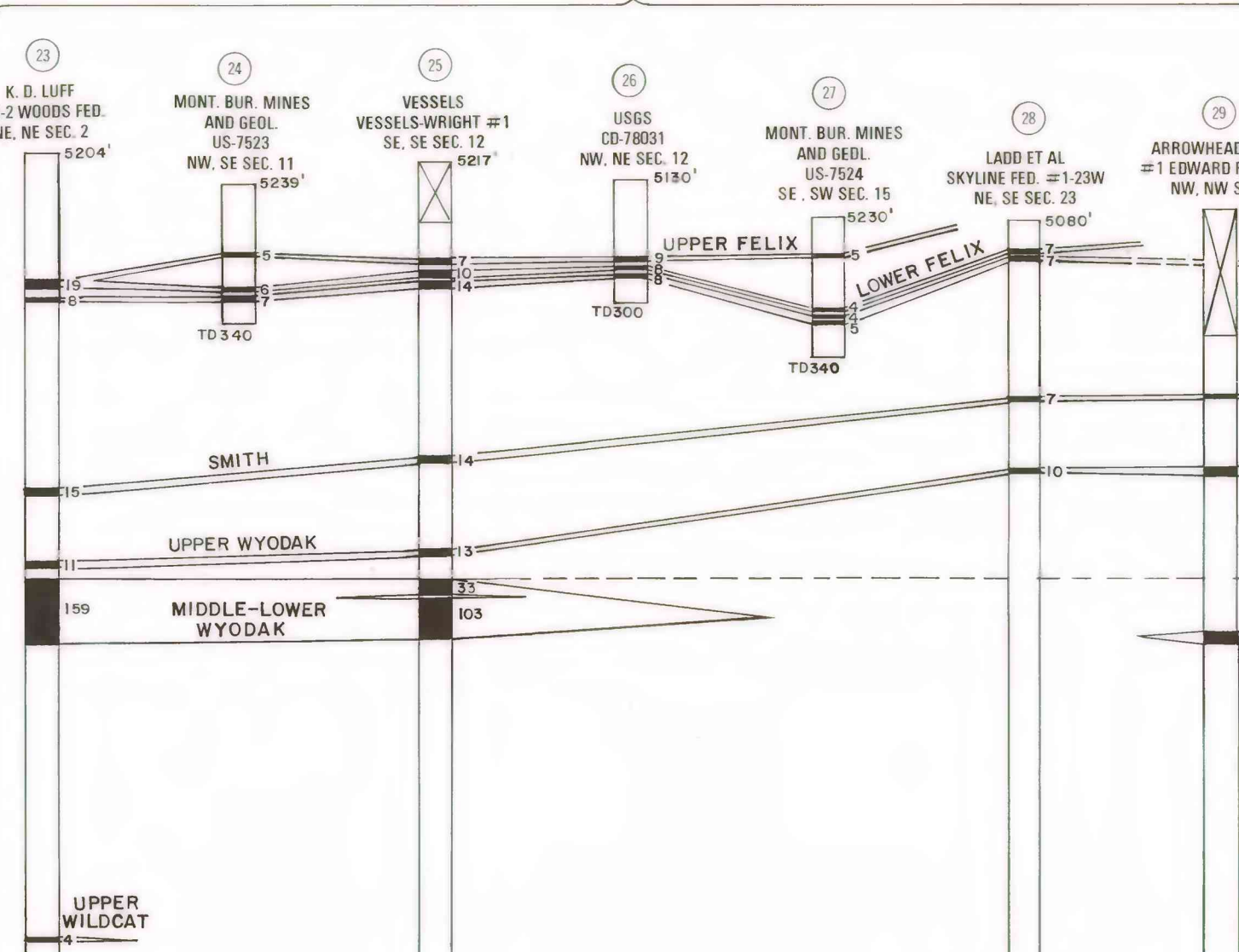


Dashed lines, indicating the projection of coal beds through drill sites where no record (NR) intervals exist, are for correlation purposes only and are not intended to portray either the structural elevation or the thickness of these coal beds.

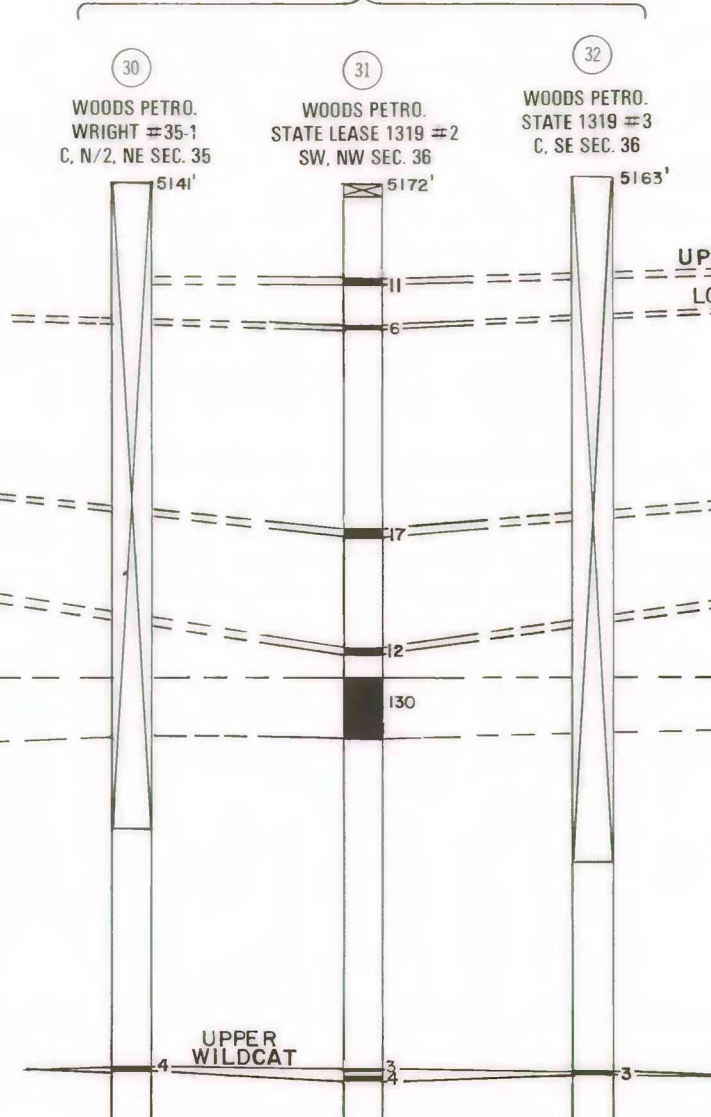
T. 43N. R. 72W.



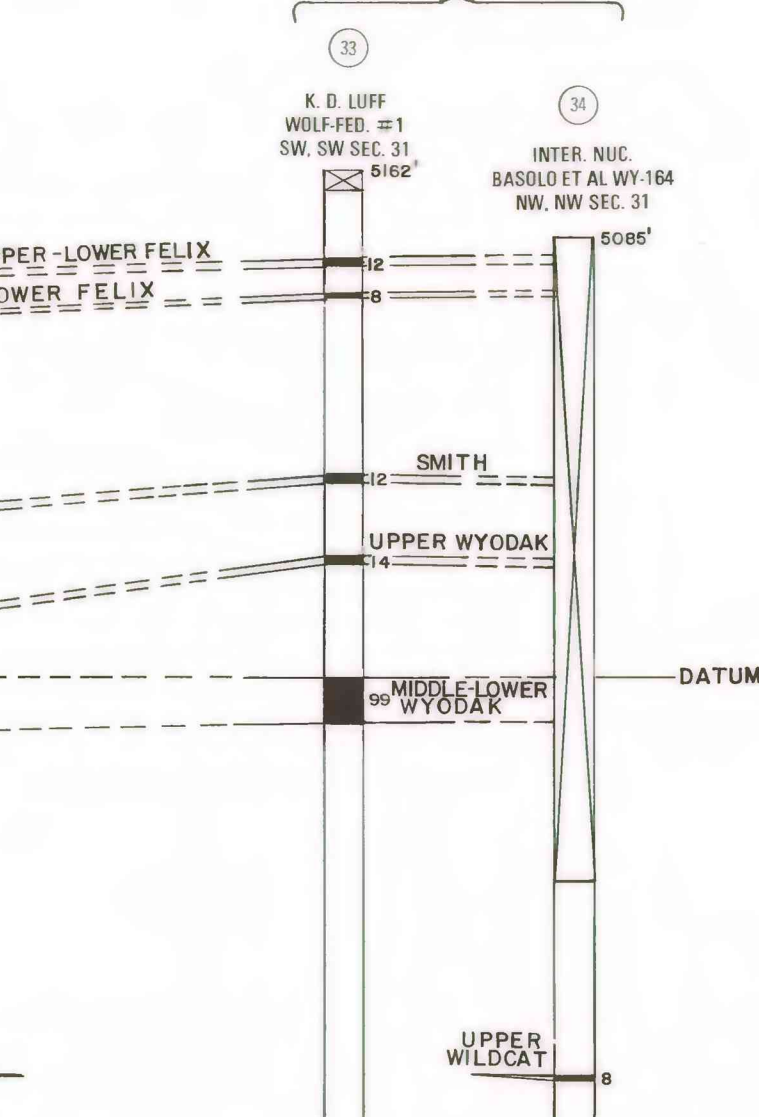
T. 43N. R. 73W.



T. 44N. R. 73W.



T. 44N. R. 72W.



This report has not been edited for conformity with U.S. Geological Survey editorial standards or stratigraphic nomenclature.

PLATE 3  
COAL DATA SHEET

COAL RESOURCE OCCURRENCE MAP OF THE NE 1/4 TURNERCREST 15' QUADRANGLE, CAMPBELL COUNTY, WYOMING

BY  
IntraSearch  
1979

UNITED STATES  
DEPARTMENT OF THE INTERIOR  
GEOLOGICAL SURVEY

OPEN FILE REPORT 79-074  
PLATE 3 OF 35