

This report has not been edited for conformity with U.S. Geological Survey editorial standards or stratigraphic nomenclature.

EXPLANATION

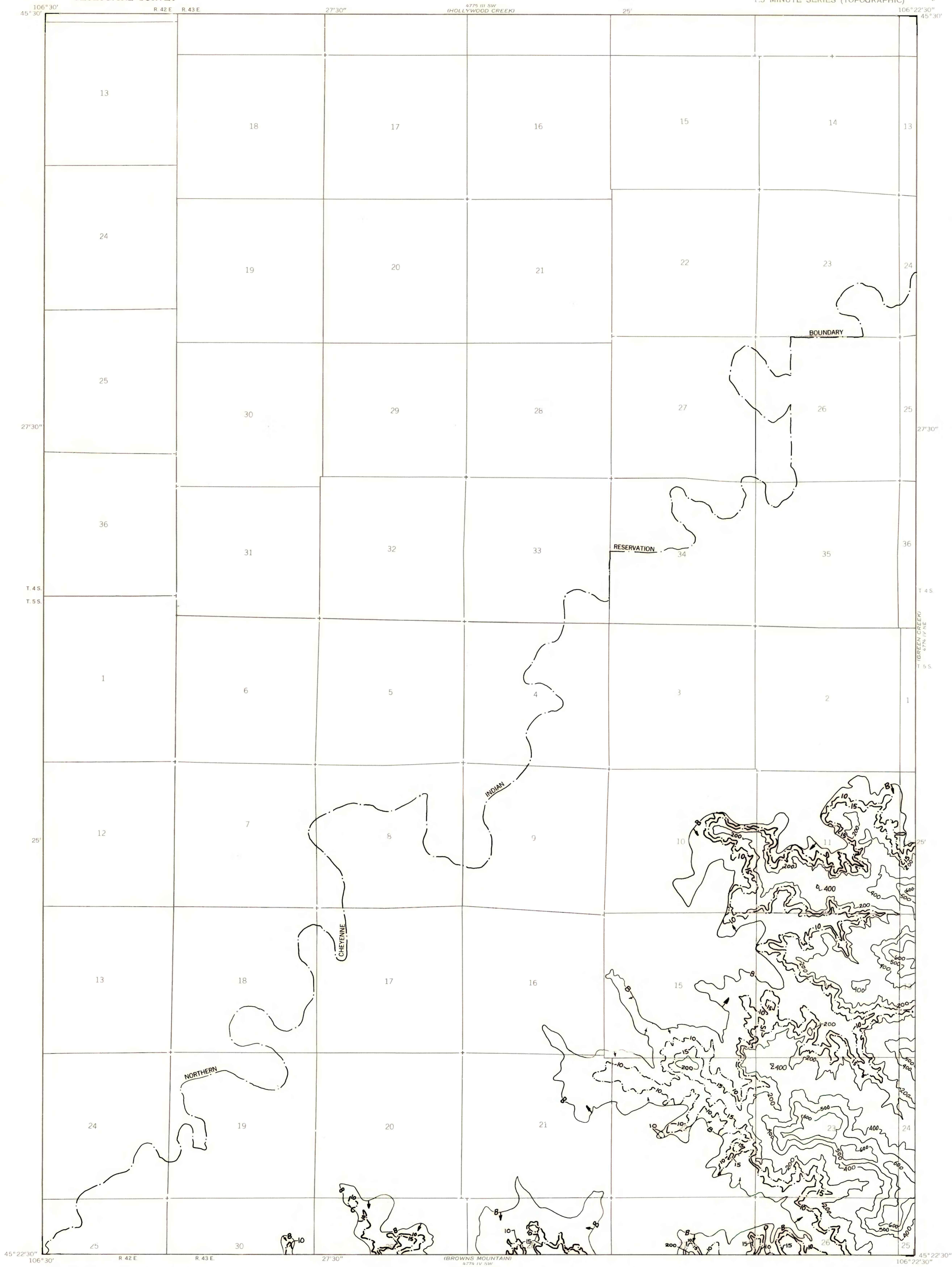
200
OVERBURDEN ISOPACH—Showing thickness of overburden, in feet, from the surface to the top of the coal bed. Isopach interval 200 feet (61 m) with an intermediate 500-foot isopach.

B
BOUNDARY OF COAL 5 FEET OR MORE THICK—Drawn along the outcrop of coal bed and/or the inferred contact between burned and unburned coal and/or the 5-foot coal isopach. Arrows point toward area of coal 5 feet or more thick.

10
MINING-RATIO CONTOUR—Number indicates cubic yards of overburden per ton of recoverable coal by surface-mining methods. Contours shown only in areas suitable for surface mining within the stripping limit.

To convert feet to meters, multiply feet by 0.3048.

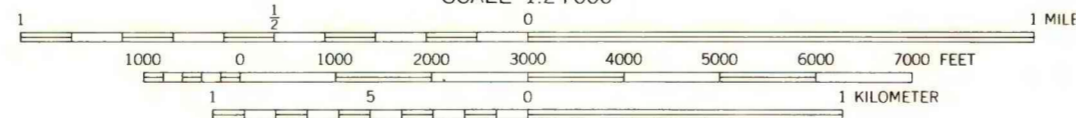
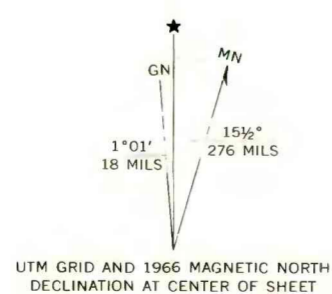
To convert yds³/ton to m³/metric ton, multiply yds³/ton by 0.842.



Base map from U.S. Geological Survey, 1966

SCALE 1:24,000

Compiled in 1977



**COAL RESOURCE OCCURRENCE MAP OF THE BIRNEY DAY SCHOOL
QUADRANGLE, ROSEBUD COUNTY, MONTANA
BY
COLORADO SCHOOL OF MINES RESEARCH INSTITUTE
1979**