

This report has not been edited for conformity with U.S. Geological Survey editorial standards or stratigraphic nomenclature.

EXPLANATION

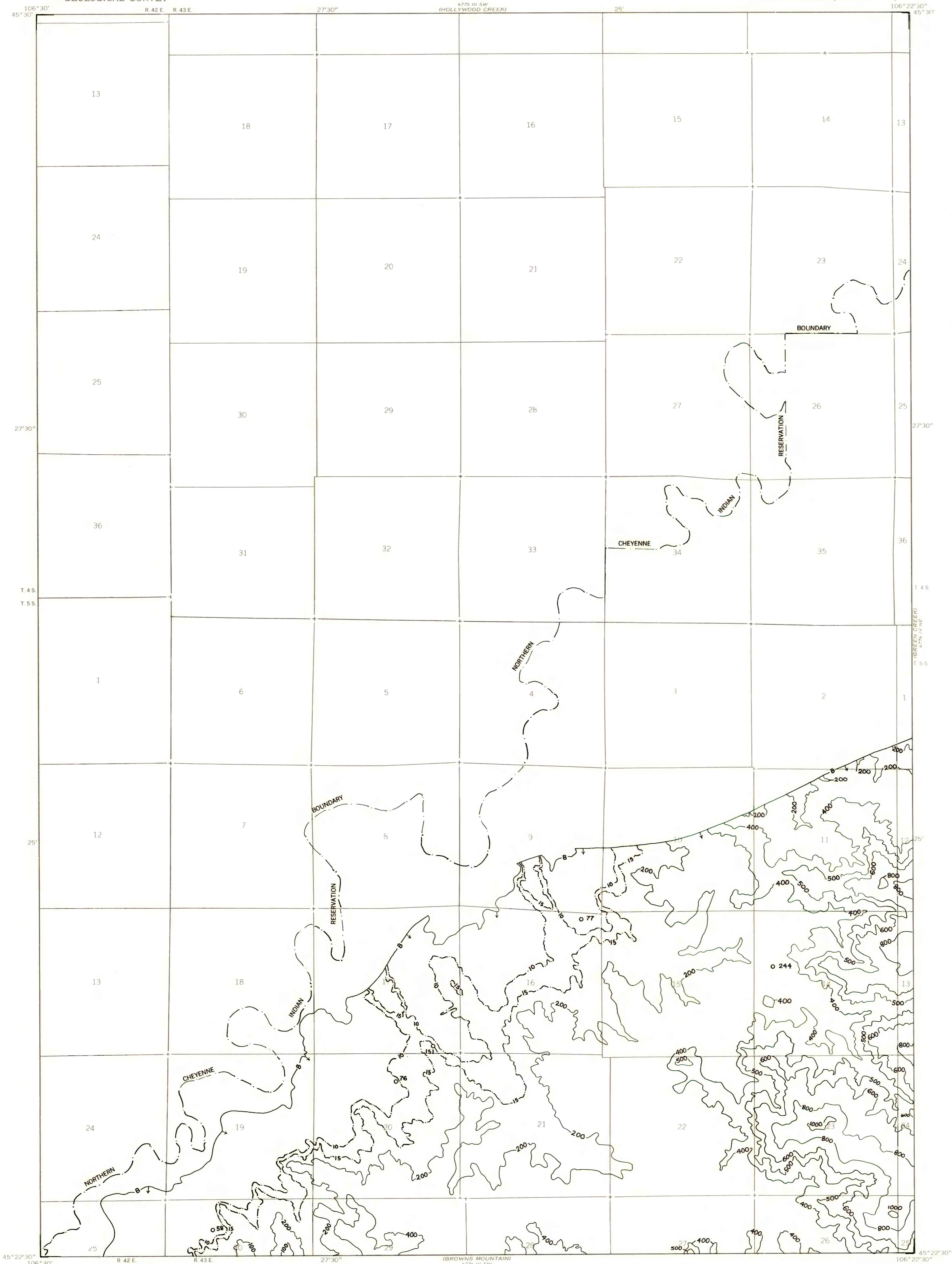
**500**  
OVERBURDEN ISOPACH—Showing thickness of overburden, in feet, from the surface to the top of the coal bed. Isopach interval 200 feet (61 m) with an intermediate 500-foot isopach.

**B**  
BOUNDARY OF COAL 5 FEET OR MORE THICK—Drawn along the outcrop of coal bed and/or the inferred contact between burned and unburned coal and/or the 5-foot coal isopach. Arrows point toward area of coal 5 feet or more thick.

**0 77**  
DRILL HOLE—Showing thickness of overburden, in feet, from the surface to the top of the coal bed.

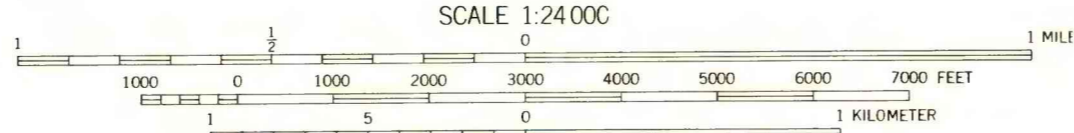
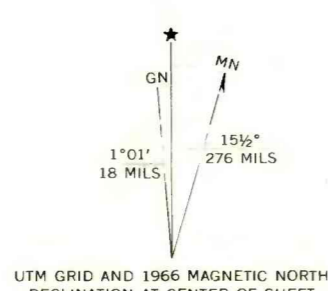
**10**  
MINING-RATIO CONTOUR—Number indicates cubic yards of overburden per ton of recoverable coal by surface-mining methods. Contours shown only in areas suitable for surface mining within the stripping limit.

To convert feet to meters, multiply feet by 0.3048.  
To convert yds<sup>3</sup>/ton to m<sup>3</sup>/metric ton, multiply yds<sup>3</sup>/ton by 0.842.



Base map from U.S. Geological Survey, 1966

Compiled in 1977



COAL RESOURCE OCCURRENCE MAP OF THE BIRNEY DAY SCHOOL  
QUADRANGLE, ROSEBUD COUNTY, MONTANA

BY  
COLORADO SCHOOL OF MINES RESEARCH INSTITUTE  
1979

PLATE 20  
OVERBURDEN ISOPACH AND MINING-RATIO  
MAP OF THE KING COAL BED