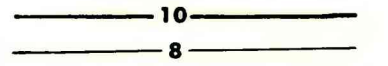
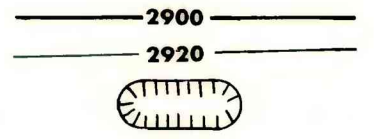


This report has not been edited for conformity with U.S. Geological Survey editorial standards or stratigraphic nomenclature.

EXPLANATION



ISOPACHS OF THE COAL BED—Showing thickness, in feet. Isopach interval 2 feet, with an intermediate 5-foot isopach.

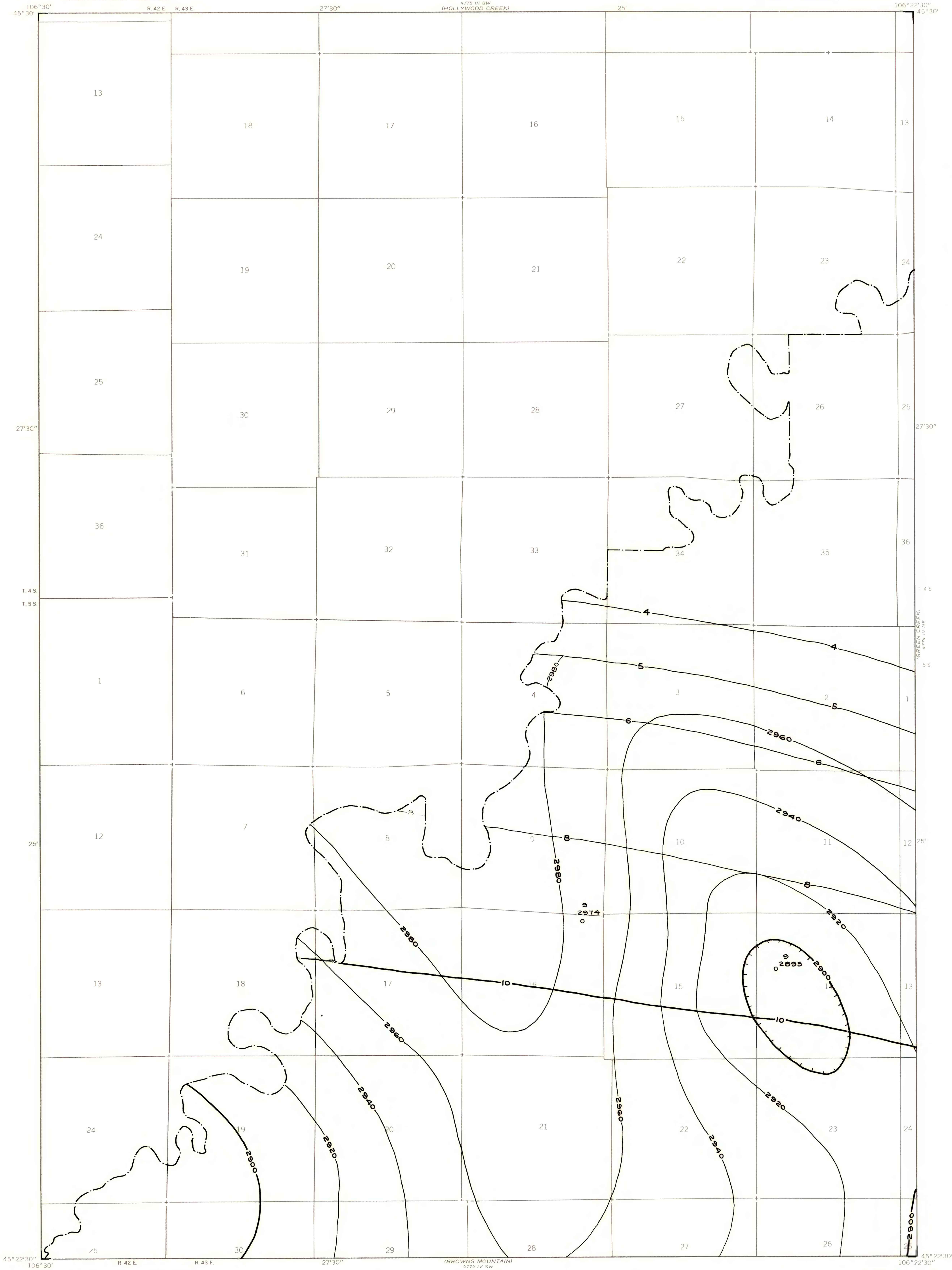


STRUCTURE CONTOURS—Drawn on the top of the coal bed. Dashed where projected beyond boundary of coal. Hachures indicate a closed depression. Contour interval 20 feet (6.1 m). Datum is mean sea level.



DRILL HOLE—Showing thickness and altitude at the top of the coal bed, in feet.

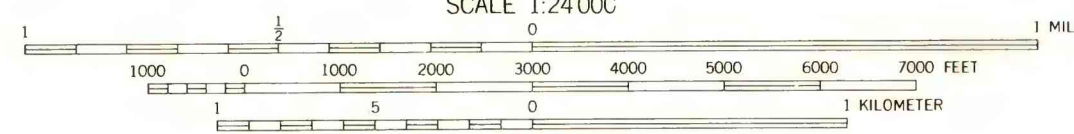
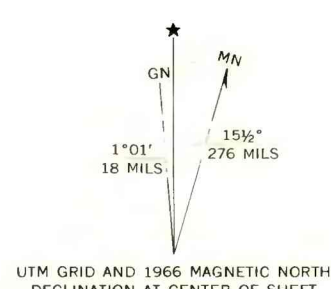
To convert feet to meters, multiply feet by 0.3048.



Base map from U.S. Geological Survey, 1966

(BROWNS MOUNTAIN)
4775 1/4 SW
SCALE 1:24,000

Compiled in 1977



COAL RESOURCE OCCURRENCE MAP OF THE BIRNEY DAY SCHOOL
QUADRANGLE, ROSEBUD COUNTY, MONTANA
BY
COLORADO SCHOOL OF MINES RESEARCH INSTITUTE
1979