

This report has not been edited for conformity with
U.S. Geological Survey editorial standards or
stratigraphic nomenclature.

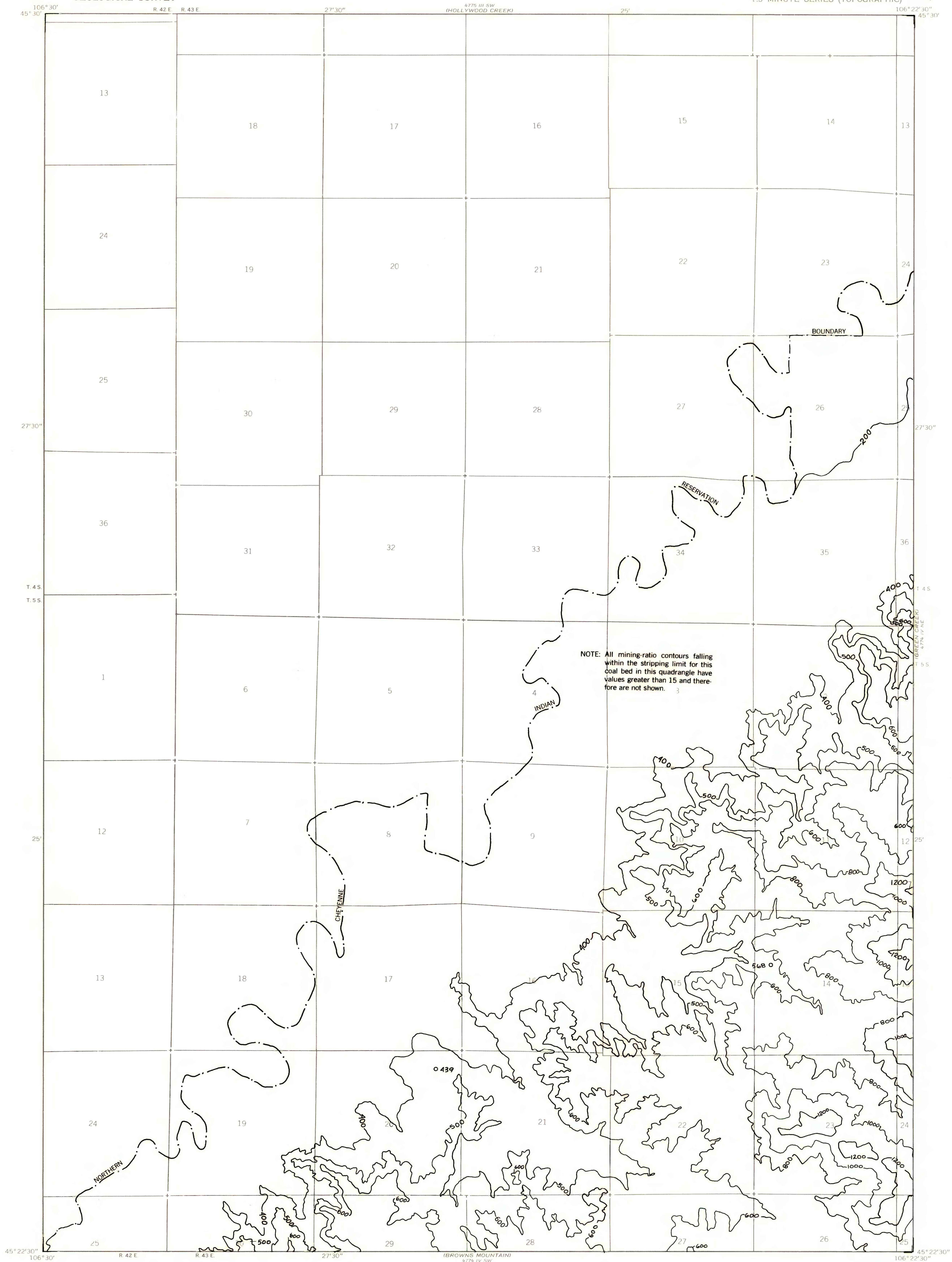
EXPLANATION

400
OVERBURDEN ISOPACH—Showing thickness of overburden, in feet, from the surface to the top of the coal bed. Isopach interval 200 feet (61 m) with an intermediate 500-foot isopach.

o 568
DRILL HOLE—Showing thickness of overburden, in feet, from the surface to the top of the coal bed.

To convert feet to meters, multiply feet by 0.3048.

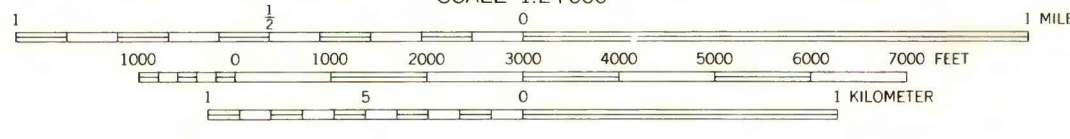
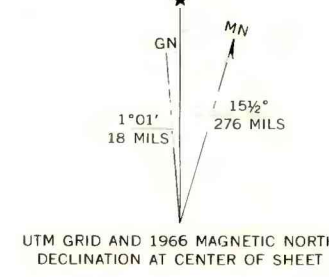
To convert yds³/ton to m³/metric ton, multiply yds³/ton by 0.842.



NOTE: All mining-ratio contours falling within the stripping limit for this coal bed in this quadrangle have values greater than 15 and therefore are not shown.

Base map from U.S. Geological Survey, 1966

Compiled in 1977



**COAL RESOURCE OCCURRENCE MAP OF THE BIRNEY DAY SCHOOL
QUADRANGLE, ROSEBUD COUNTY, MONTANA**
BY
**COLORADO SCHOOL OF MINES RESEARCH INSTITUTE
1979**