

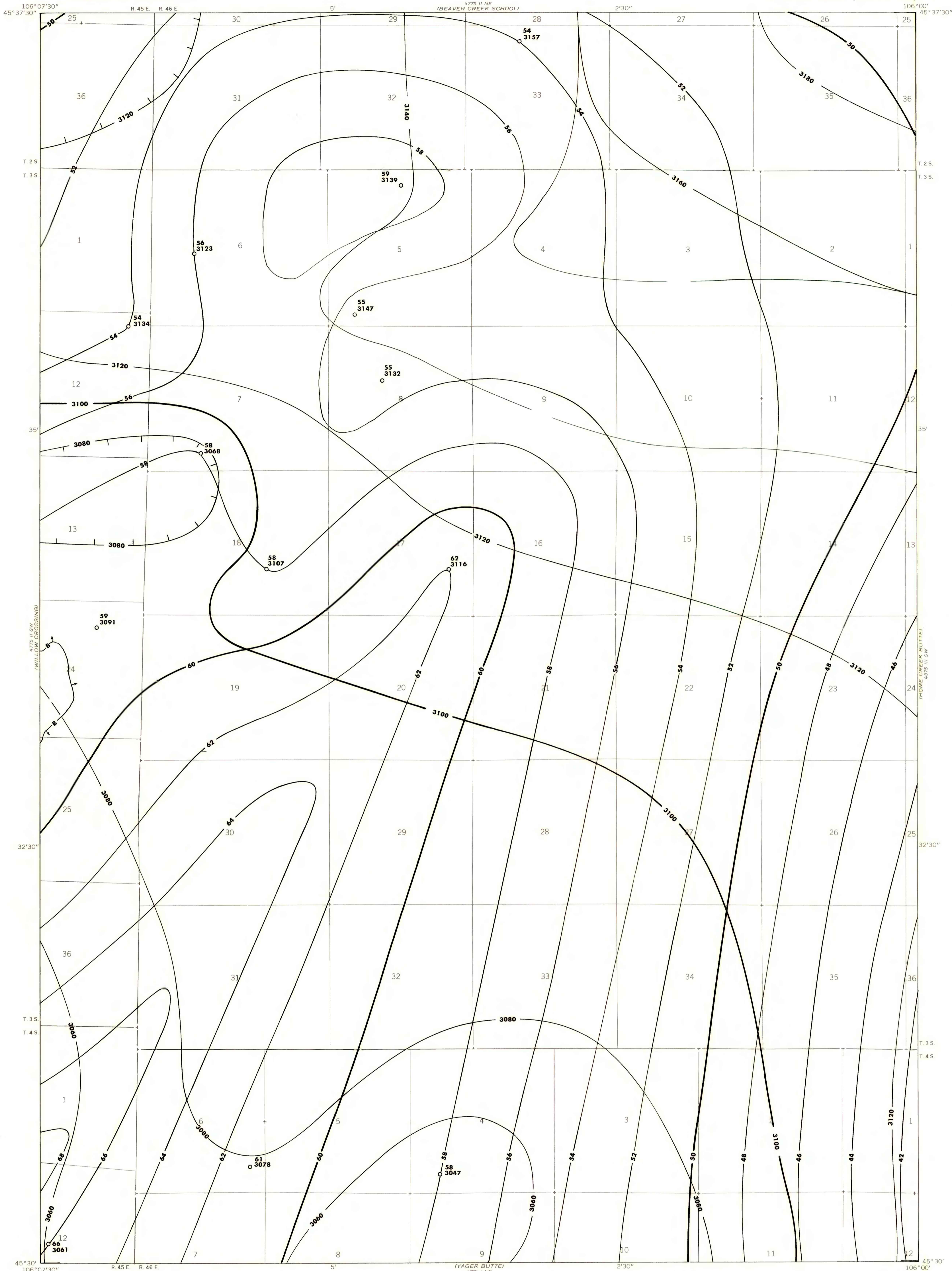
54° 11' 14" N
106° 07' 30" W
R. 45 E. R. 46 E.

UNITED STATES
DEPARTMENT OF THE INTERIOR
GEOLOGICAL SURVEY

COLEMAN DRAW QUADRANGLE
MONTANA - POWDER RIVER CO.
7.5 MINUTE SERIES (TOPOGRAPHIC)

OPEN FILE REPORT 79-083
PLATE 25 OF 31

OPEN-FILE REPORT
This report has not been edited for conformity with
U.S. Geological Survey editorial standards or
stratigraphic nomenclature.



EXPLANATION

— 60 —
— 58 —
ISOPACHS OF THE COAL BED—Showing thickness, in feet. Isopach interval 2 feet.

— 3100 —
— 3080 —
— 3120 —
STRUCTURE CONTOURS—Drawn on the top of the coal bed. Dashed where projected beyond boundary of coal. Hachures indicate a closed depression. Contour interval 20 feet (6.1 m). Datum is mean sea level.

↑ B ↑
BOUNDARY OF COAL DEPOSIT—Drawn along the outcrop of coal bed and/or the contact between burned and unburned coal (dashed where inferred by present author beyond the limits of original data). Arrows point toward coal-bearing area.

62
3116
○
DRILL HOLE—Showing thickness and altitude at the top of the coal bed, in feet.

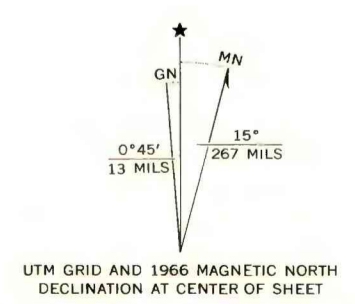
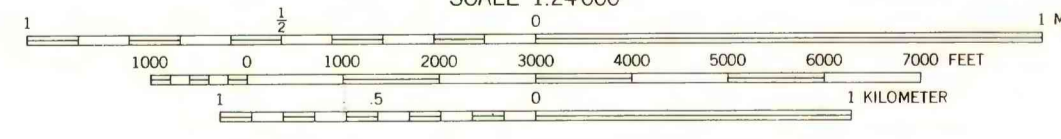
To convert feet to meters, multiply feet by 0.3048.

Base map from U.S. Geological Survey, 1966

(YAGER BUTTE)
4776 1 NE

SCALE 1:24 000

Compiled in 1977



**COAL RESOURCE OCCURRENCE MAP OF THE COLEMAN DRAW QUADRANGLE,
POWDER RIVER COUNTY, MONTANA
BY
COLORADO SCHOOL OF MINES RESEARCH INSTITUTE
1979**

PLATE 25
ISOPACH AND STRUCTURE CONTOUR MAP OF
THE KNOBLOCH COAL BED