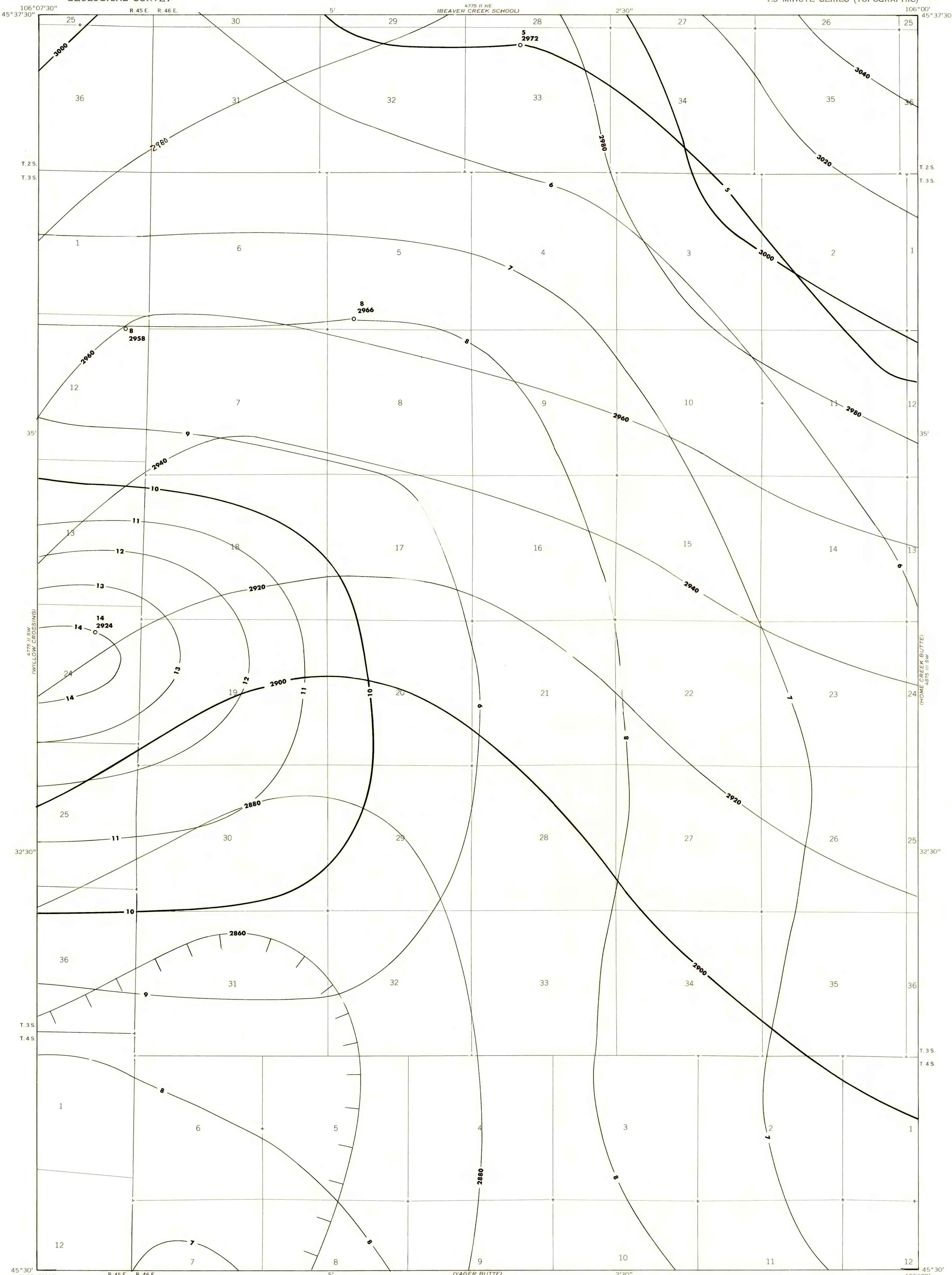


OPEN-FILE REPORT
This report has not been edited for conformity with U.S. Geological Survey editorial standards or stratigraphic nomenclature.



EXPLANATION

— 10 —
— 9 —
ISOPACHS OF THE COAL BED—Showing thickness, in feet. Isopach interval 1 foot.

— 3000 —
— 2980 —
○ 2860 ○
STRUCTURE CONTOURS—Drawn on the top of the coal bed. Dashed where projected beyond boundary of coal. Hachures indicate a closed depression. Contour interval 20 feet (6.1 m). Datum is mean sea level.

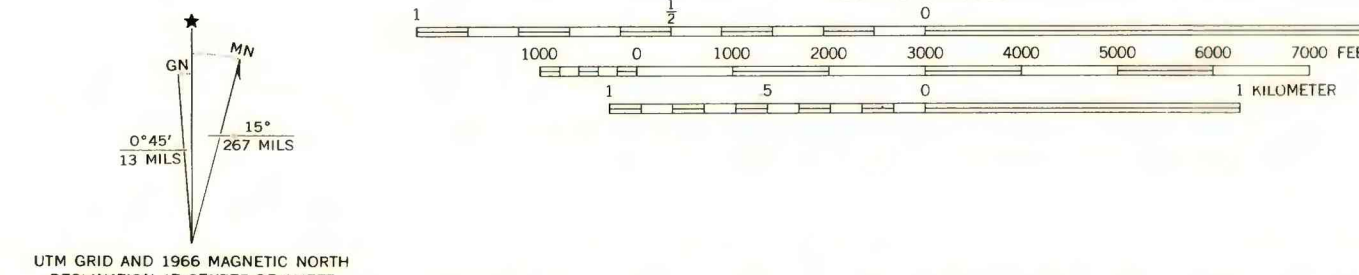
14
○ 2924
○
DRILL HOLE—Showing thickness and altitude at the top of the coal bed, in feet.

To convert feet to meters, multiply feet by 0.3048.

Base map from U.S. Geological Survey, 1966

SCALE 1:24,000

Compiled in 1977



**COAL RESOURCE OCCURRENCE MAP OF THE COLEMAN DRAW QUADRANGLE,
POWDER RIVER COUNTY, MONTANA**

BY
COLORADO SCHOOL OF MINES RESEARCH INSTITUTE
1979