

4774 II SW
(BEAVER CREEK
RESERVOIR)

UNITED STATES
DEPARTMENT OF THE INTERIOR
GEOLOGICAL SURVEY

COLEMAN DRAW QUADRANGLE
MONTANA - POWDER RIVER CO.
7.5 MINUTE SERIES (TOPOGRAPHIC)

OPEN FILE REPORT 79-083
PLATE 29 OF 31

OPEN-FILE REPORT
This report has not been edited for conformity with
U.S. Geological Survey editorial standards or
stratigraphic nomenclature.

EXPLANATION

600
OVERBURDEN ISOPACH—Showing thickness of overburden, in feet, from the surface to the top of the coal bed. Isopach interval 200 feet (61 m) with an intermediate 500-foot isopach.

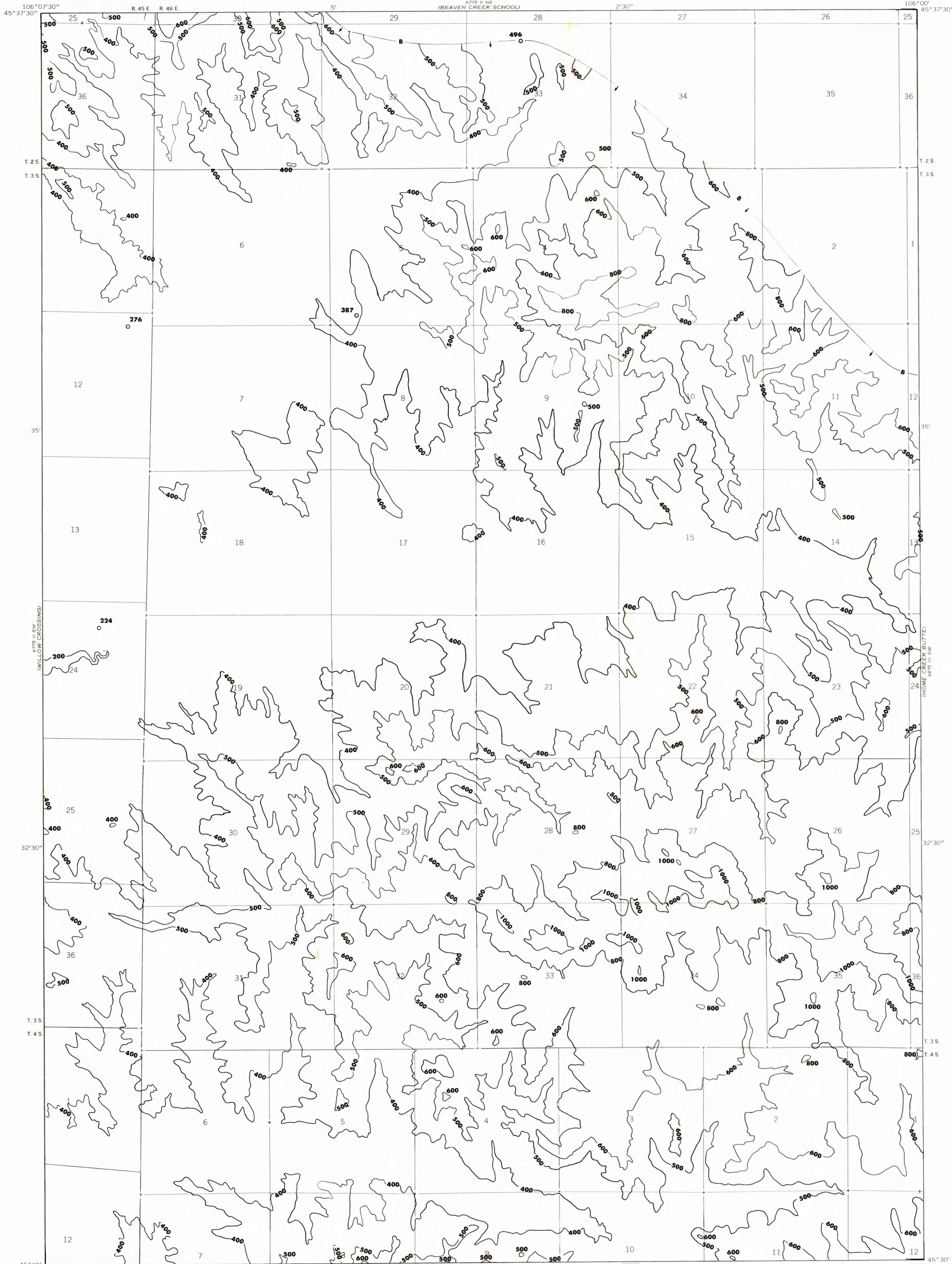
B
BOUNDARY OF COAL 5 FEET OR MORE THICK—
Drawn along the outcrop of coal bed and/or the inferred contact between burned and unburned coal and/or the 5-foot coal isopach. Arrows point toward area of coal 5 feet or more thick.

224
DRILL HOLE—Showing thickness of overburden, in feet, from the surface to the top of the coal bed.

To convert feet to meters, multiply feet by 0.3048.

To convert yds³/ton to m³/metric ton, multiply yds³/ton by 0.842.

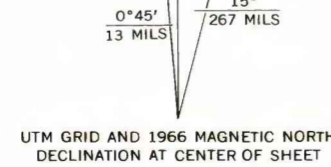
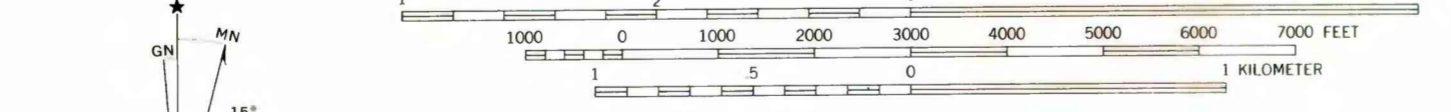
NOTE: All mining-ratio contours falling within the stripping limit for this coal bed in this quadrangle have values greater than 15 and therefore are not shown.



Base map from U.S. Geological Survey, 1966

SCALE 1:24,000

Compiled in 1977



**COAL RESOURCE OCCURRENCE MAP OF THE COLEMAN DRAW QUADRANGLE,
POWDER RIVER COUNTY, MONTANA
BY
COLORADO SCHOOL OF MINES RESEARCH INSTITUTE
1979**

PLATE 29
OVERBURDEN ISOPACH AND MINING-RATIO
MAP OF THE FLOWERS-GOODALE COAL BED