

OPEN-FILE REPORT  
 This report has not been edited for conformity with  
 U.S. Geological Survey editorial standards or  
 stratigraphic nomenclature.

UNITED STATES  
 DEPARTMENT OF THE INTERIOR  
 GEOLOGICAL SURVEY

COOK CREEK RESERVOIR QUADRANGLE  
 MONTANA  
 7.5 MINUTE SERIES (TOPOGRAPHIC)

EXPLANATION

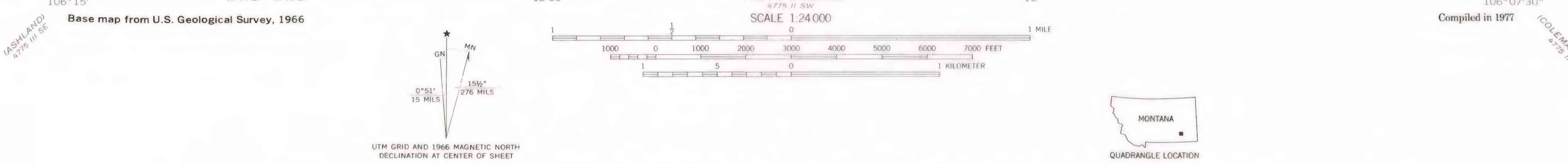
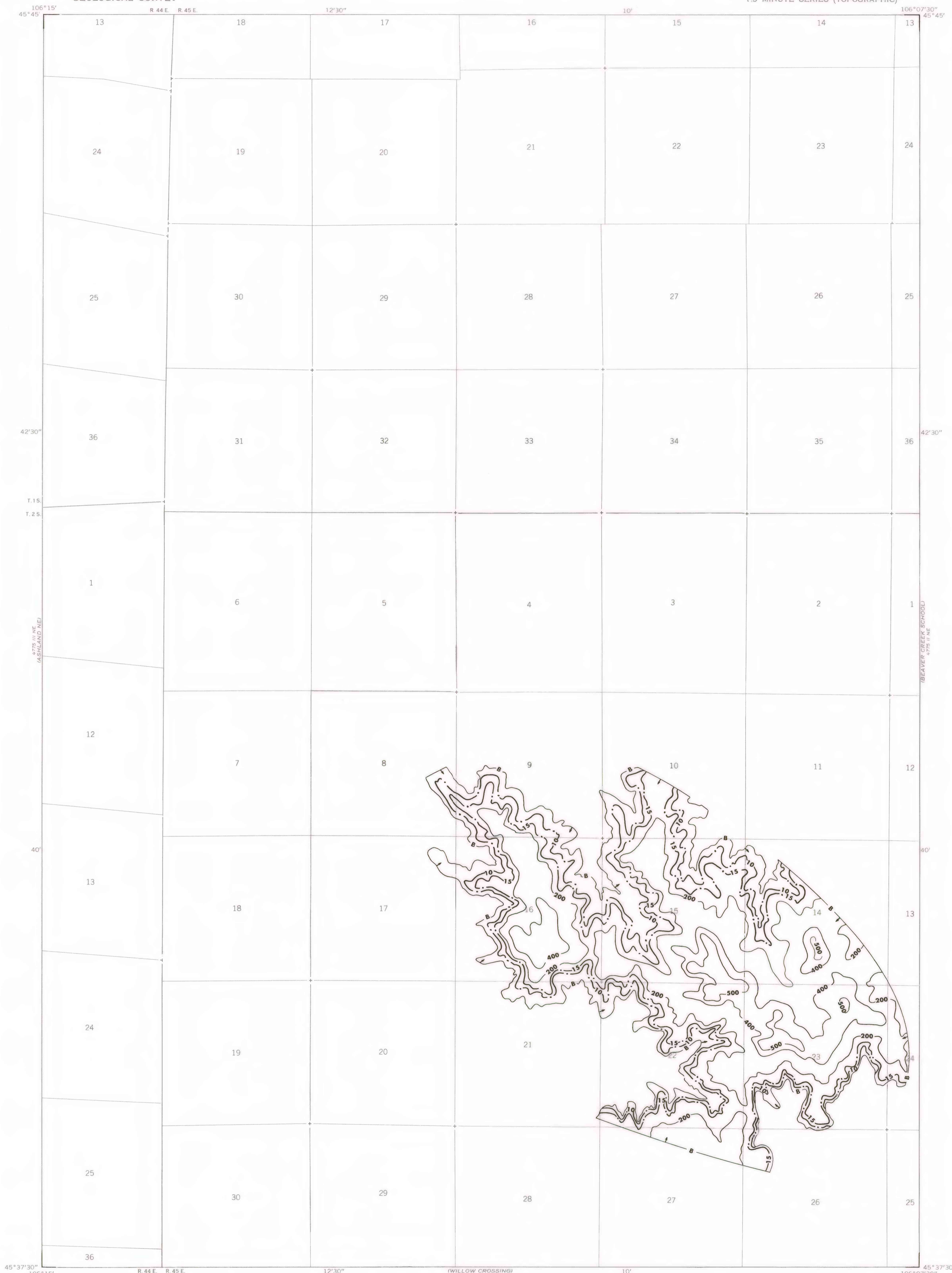
**200**  
 OVERBURDEN ISOPACH—Showing thickness of overburden, in feet, from the surface to the top of the coal bed. Isopach interval 200 feet (61 m) with an intermediate 500-foot isopach.

**B**  
 BOUNDARY OF COAL 5 FEET OR MORE THICK—  
 Drawn along the outcrop of coal bed and/or the inferred contact between burned and unburned coal and/or the 5-foot coal isopach. Arrows point toward area of coal 5 feet or more thick.

**10**  
 MINING-RATIO CONTOUR—Number indicates cubic yards of overburden per short ton of recoverable coal by surface-mining methods. Contours shown only in areas suitable for surface mining within the stripping limits.

To convert feet to meters, multiply feet by 0.3048.

To convert yds<sup>3</sup>/ton to m<sup>3</sup>/metric ton, multiply yds<sup>3</sup>/ton by 0.842.



**COAL RESOURCE OCCURRENCE MAP OF THE COOK CREEK RESERVOIR  
 QUADRANGLE, POWDER RIVER AND ROSEBUD COUNTIES, MONTANA  
 BY  
 COLORADO SCHOOL OF MINES RESEARCH INSTITUTE  
 1979**