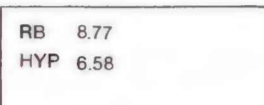


OPEN-FILE REPORT  
This report has not been edited for conformity with  
U.S. Geological Survey editorial standards or  
stratigraphic nomenclature.

EXPLANATION

 NON-FEDERAL COAL LAND WITHIN THE KCRA—  
Land for which the Federal Government does not own  
the coal rights.

 RB 8.77  
HYP 6.58

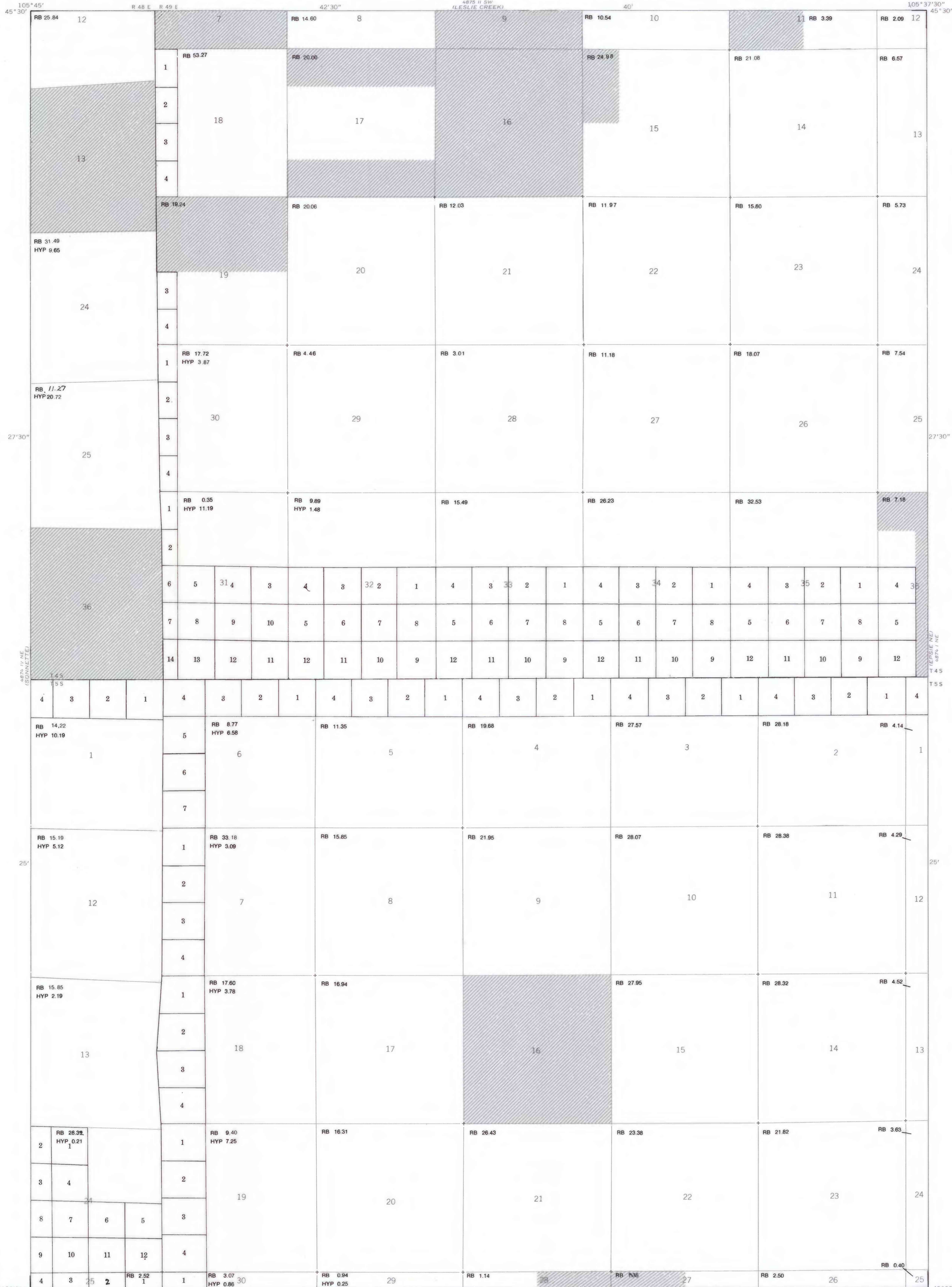
TOTAL RESERVE BASE (RB) AND HYPOTHETICAL  
RESOURCES (HYP) OF COAL PER SECTION—In  
millions of short tons, calculated for each section of  
Federal land following the guidelines given in U.S.  
Geol. Survey Bull. 1450-B (1976). To convert short tons  
to metric tons, multiply short tons by 0.9072.

4	3	2	1
5	6		
6			
7			

SECTION OF LAND—Showing lots and lot numbers.

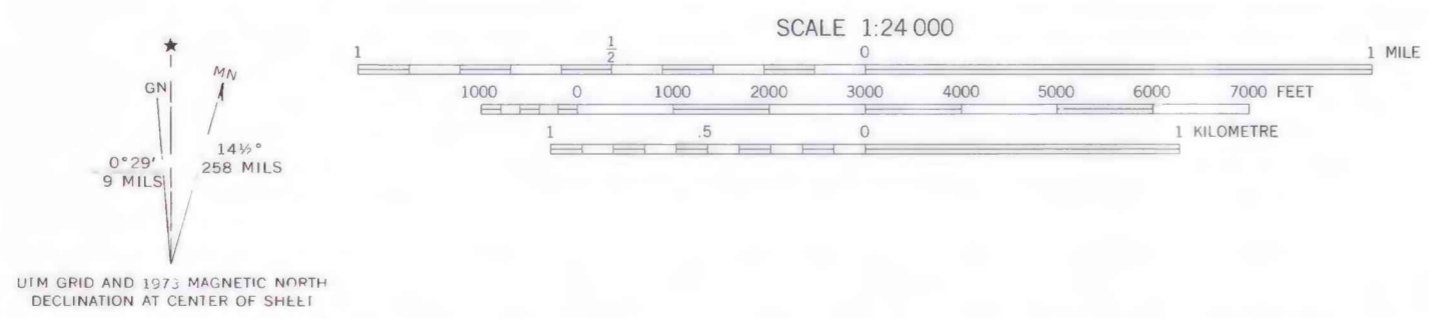
NOTE: BLM coal plat data indicating areas of coal  
ownership current as of August 9, 1977. This entire  
quadrangle lies within the Known Recoverable Coal  
Resource Area (KCRA).

REFERENCE  
U.S. Bureau of Mines and U.S. Geological Survey, 1976,  
Coal resource classification system of the U.S. Bureau  
of Mines and U.S. Geological Survey: U.S. Geol. Survey  
Bull. 1450-B, 7 p.



Base map from U.S. Geological Survey, 1973

Compiled in 1977



COAL RESOURCE OCCURRENCE MAP OF THE EPSIE QUADRANGLE,  
POWDER RIVER COUNTY, MONTANA  
BY  
COLORADO SCHOOL OF MINES RESEARCH INSTITUTE  
1979