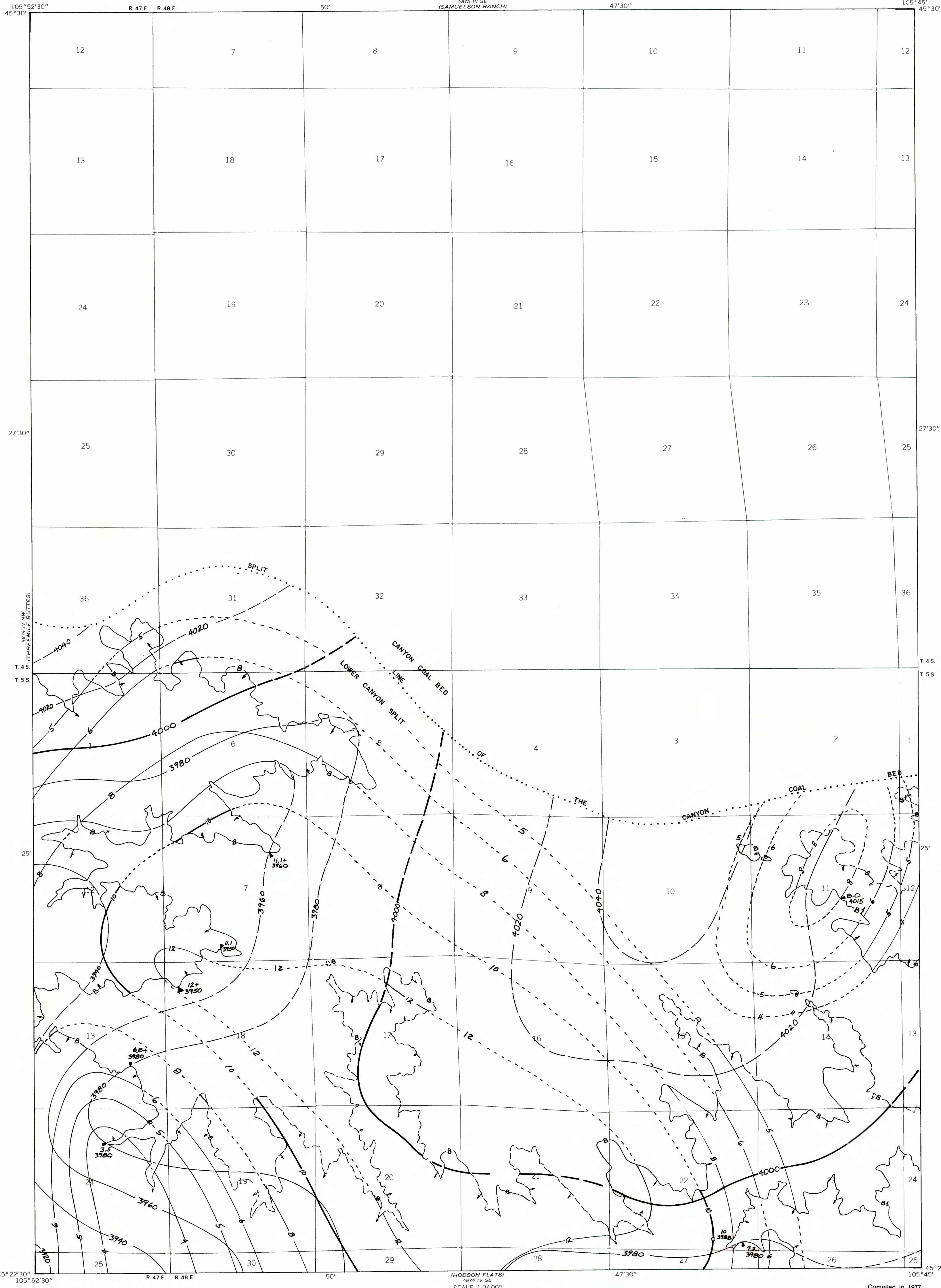


OPEN-FILE REPORT  
This report has not been edited for conformity with  
U.S. Geological Survey editorial standards or  
stratigraphic nomenclature.



**EXPLANATION**

— 10 —  
— 5 —

ISOPACHS OF THE COAL BED—Showing thickness, in feet. Isopach interval 2 feet, with an intermediate 5-foot isopach.

— 4000 —  
— 3980 —

STRUCTURE CONTOURS—Drawn on the top of the coal bed. Dashed where projected beyond boundary of coal. Contour interval 20 feet (6.1 m). Datum is mean sea level.

68 +  
3980

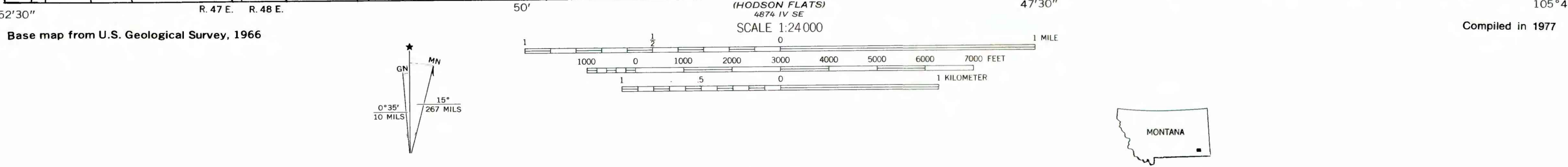
BOUNDARY OF COAL DEPOSIT—Drawn along the outcrop of coal bed and/or the contact between burned and unburned coal (dashed where inferred by present author beyond the limits of original data), and/or the split line of the coal bed. Arrows point toward coal-bearing area. Numbers at triangle are coal bed thickness and altitude at the top of the coal bed, measured in feet. Plus (+) sign after number indicates incomplete measurement.

10  
3988

DRILL HOLE—Showing thickness and altitude at the top of the coal bed, in feet.

To convert feet to meters, multiply feet by 0.3048.

(HOME CREEK BUTTE)  
 482 I, SE  
 482 I, SW  
 (PHILLIPS BUTTE)  
 482 I, SW  
 482 I, SE



**COAL RESOURCE OCCURRENCE MAP OF THE SONNETTE QUADRANGLE,  
POWDER RIVER COUNTY, MONTANA**  
BY  
**COLORADO SCHOOL OF MINES RESEARCH INSTITUTE**  
1979