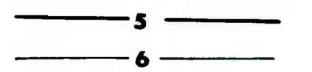
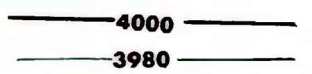


OPEN-FILE REPORT  
This report has not been edited for conformity with  
U.S. Geological Survey editorial standards or  
stratigraphic nomenclature.

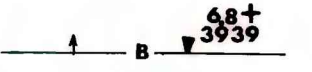
EXPLANATION



ISOPACHS OF THE COAL BED—Showing thickness, in  
feet. Isopach interval 1 foot.

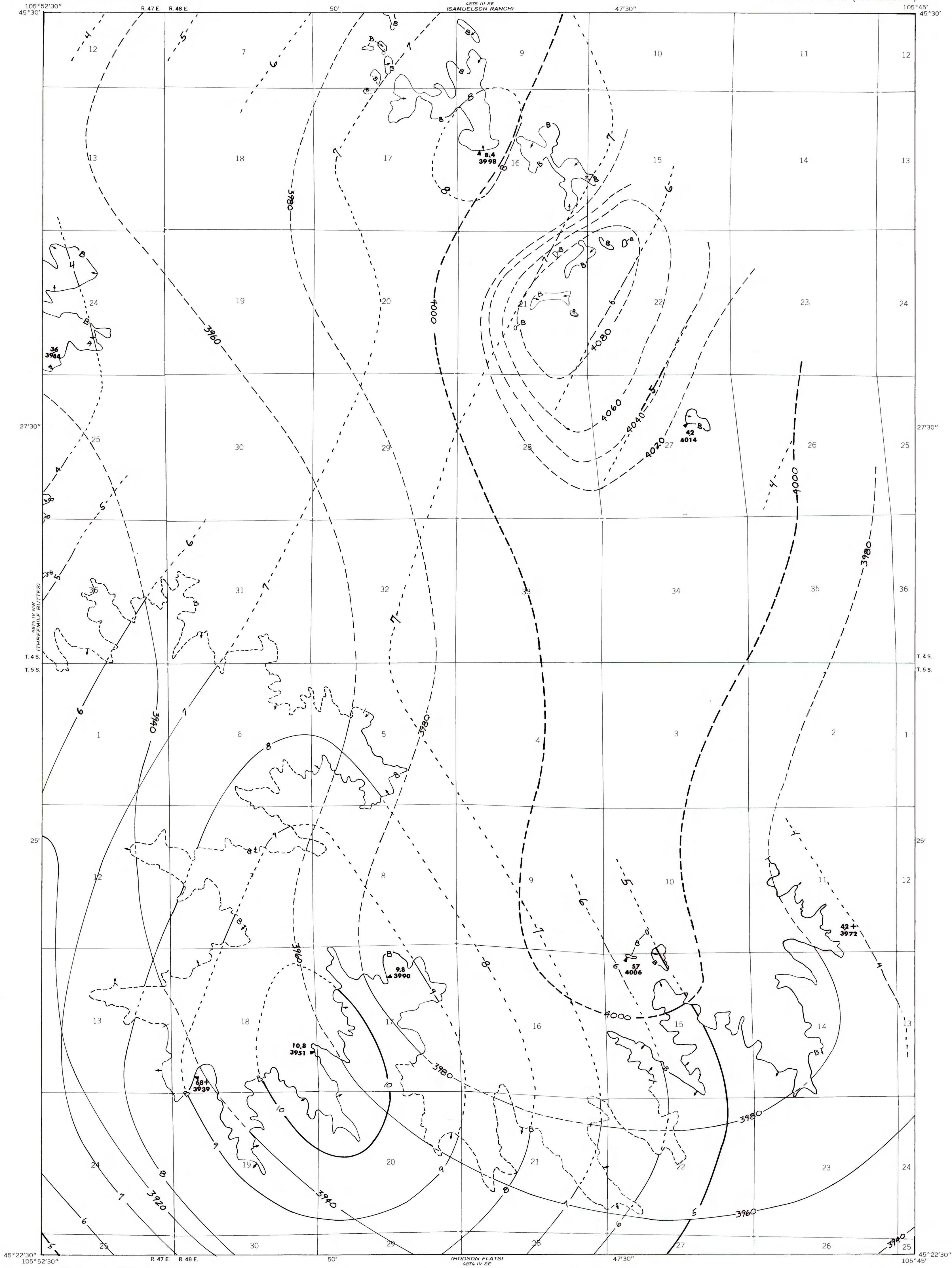


STRUCTURE CONTOURS—Drawn on the top of the coal  
bed. Dashed where projected beyond boundary of coal.  
Contour interval 20 feet (6.1 m). Datum is mean sea  
level.



BOUNDARY OF COAL DEPOSIT—Drawn along the  
outcrop of coal bed and/or the contact between burned  
and unburned coal (dashed where inferred by present  
author beyond the limits of original data). Arrows point  
toward coal-bearing area. Number is thickness of coal  
bed, in feet, measured at triangle. Plus (+) sign after  
number indicates incomplete measurement.

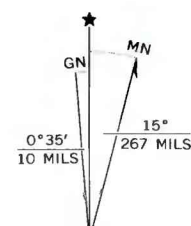
To convert feet to meters, multiply feet by 0.3048.



Base map from U.S. Geological Survey, 1966



Compiled in 1977



COAL RESOURCE OCCURRENCE MAP OF THE SONNETTE QUADRANGLE,  
POWDER RIVER COUNTY, MONTANA

BY  
COLORADO SCHOOL OF MINES RESEARCH INSTITUTE  
1979