
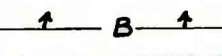
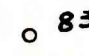


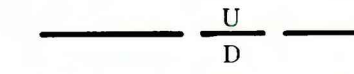
OPEN-FILE REPORT
This report has not been edited for conformity with
U.S. Geological Survey editorial standards or
stratigraphic nomenclature.

EXPLANATION

 **700**
OVERBURDEN ISOPACH—Showing thickness of overburden, in feet, from the surface to the top of the coal bed. Isopach interval 200 feet (61 m) with an intermediate 1000 foot (305 m) isopach.

 **B**
BOUNDARY OF COAL 5 FEET OR MORE THICK—
Drawn along the outcrop of coal bed and/or the inferred contact between burned and unburned coal, and/or the 5-foot coal isopach, and/or an insufficient data line. Arrows point toward area of coal 5 feet or more thick.

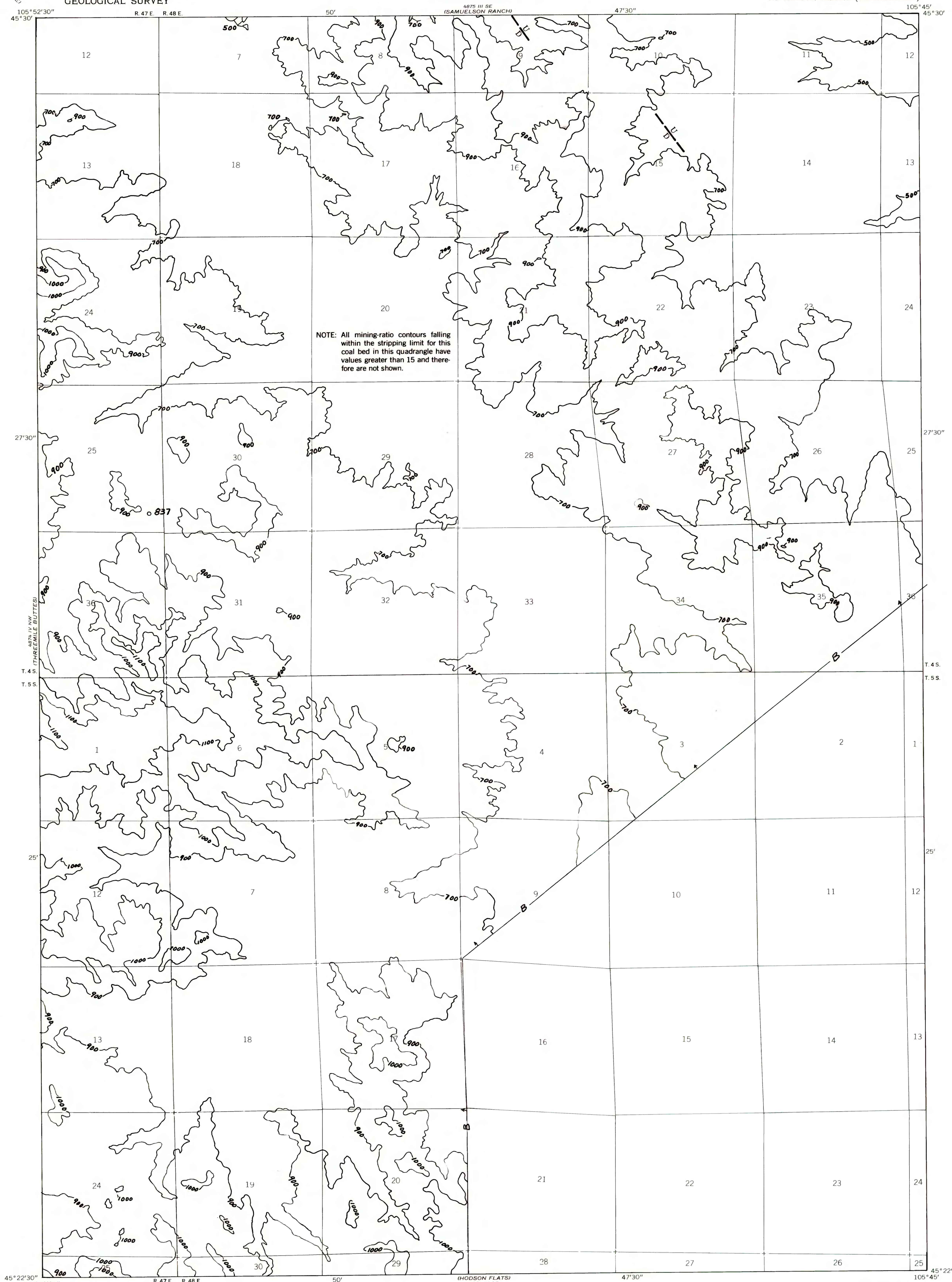
 **837**
DRILL HOLE—Showing thickness of overburden, in feet, from the surface to the top of the coal bed.

 **U**
D
FAULT—Dashed where approximately located. U, up-thrown side; D, downthrown side.

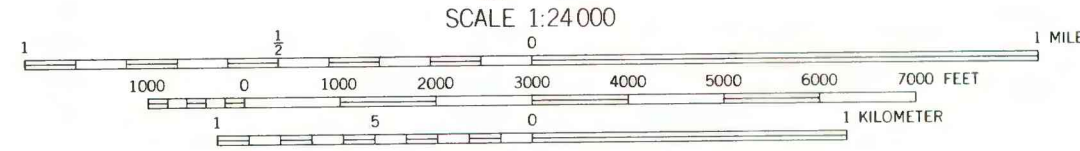
To convert feet to meters, multiply feet by 0.3048.

To convert yds³/ton to m³/metric ton, multiply yds³/ton by 0.842.

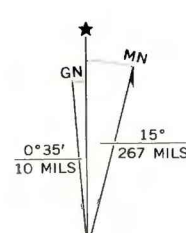
NOTE: All mining-ratio contours falling within the stripping limit for this coal bed in this quadrangle have values greater than 15 and therefore are not shown.



Base map from U.S. Geological Survey, 1966



Compiled in 1977



**COAL RESOURCE OCCURRENCE MAP OF THE SONNETTE QUADRANGLE,
POWDER RIVER COUNTY, MONTANA**

**BY
COLORADO SCHOOL OF MINES RESEARCH INSTITUTE
1979**