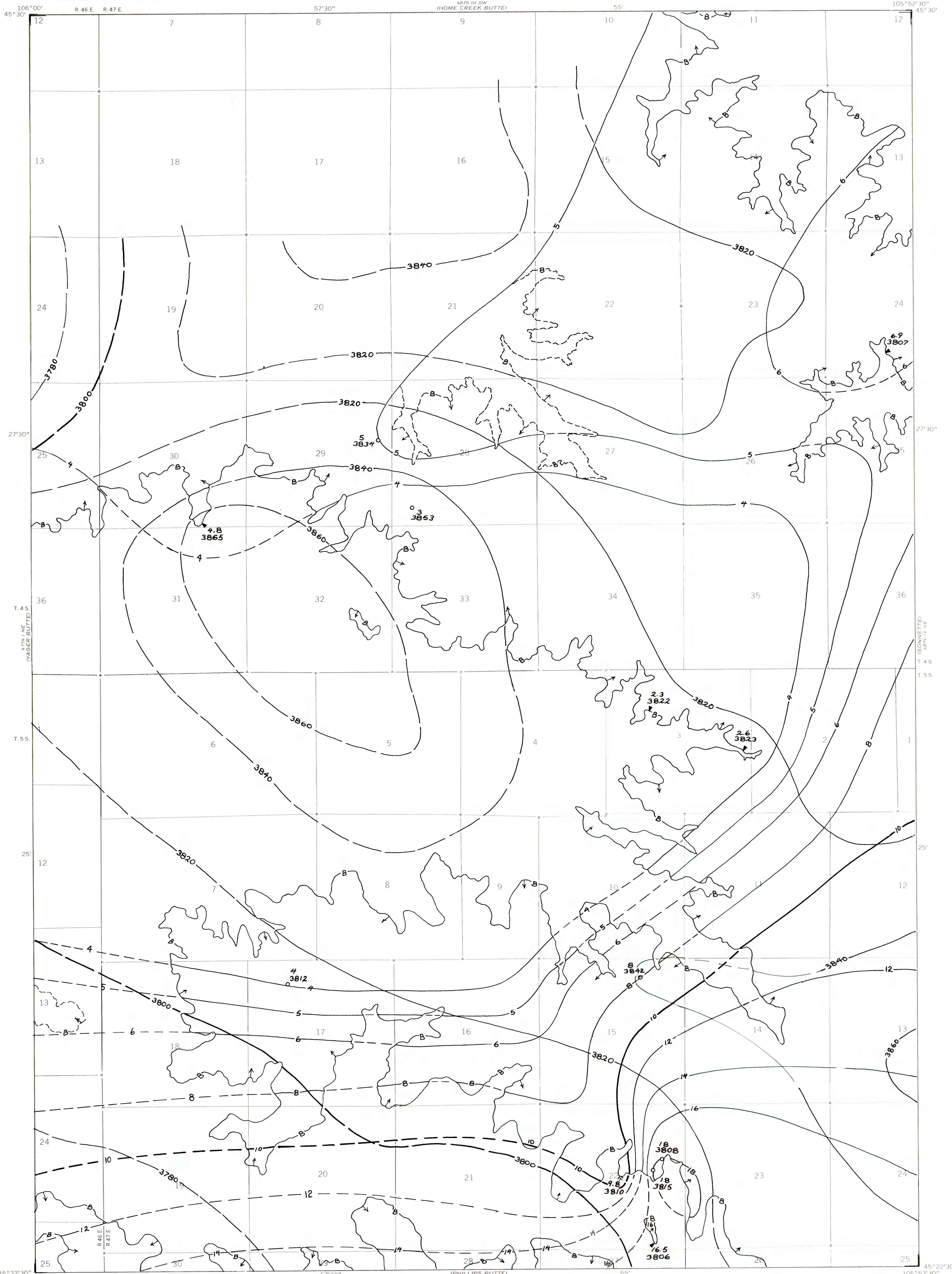
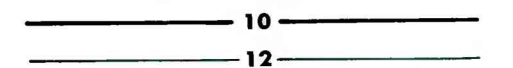


OPEN-FILE REPORT
This report has not been edited for conformity with
U.S. Geological Survey editorial standards or
stratigraphic nomenclature.



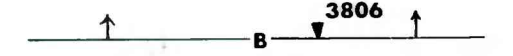
EXPLANATION



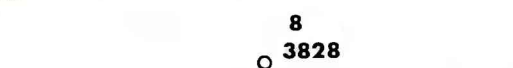
ISOPACHS OF THE COAL BED—Showing thickness, in feet. Isopach interval 2 feet, with an intermediate 5-foot isopach.



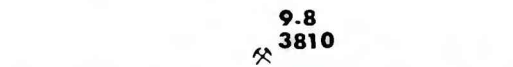
STRUCTURE CONTOURS—Drawn on the top of the coal bed. Dashed where projected beyond boundary of coal. Contour interval 20 feet (6.1 m). Datum is mean sea level.



BOUNDARY OF COAL DEPOSIT—Drawn along the outcrop of coal bed and/or the contact between burned and unburned coal, and/or the fault boundary of the coal (dashed where inferred by present author beyond the limits of original data). Arrows point toward coal-bearing area. Numbers at triangle are coal bed thickness and altitude at the top of the coal bed, measured in feet.



DRILL HOLE—Showing thickness and altitude at the top of the coal bed, in feet.



COAL MINE—Showing thickness and altitude at the top of the coal bed, in feet.

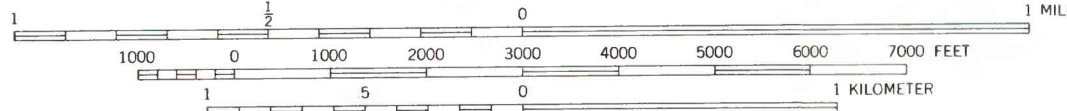
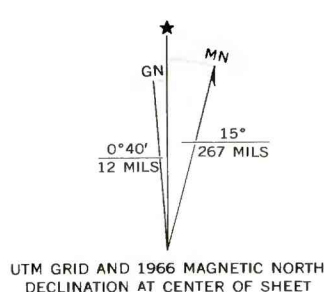
To convert feet to meters, multiply feet by 0.3048.

Base map from U.S. Geological Survey, 1966

(PHILLIPS BUTTE)
4875 1/4 SW

SCALE 1:24000

Compiled in 1977



COAL RESOURCE OCCURRENCE MAP OF THE THREEMILE BUTTES QUADRANGLE,
POWDER RIVER COUNTY, MONTANA
BY
COLORADO SCHOOL OF MINES RESEARCH INSTITUTE
1979